

# WATERHOG CLASSIC MAT

## ENTRANCE MAT



One of our most popular entrance mats for many years, the Waterhog Classic is ideal for most applications inside or out.

Featuring durable rubber reinforced face nubs and it's "waffle" design that provides a crush-proof scraping action. No other entrance mat traps water and dirt so effectively.

### FEATURES & BENEFITS

- Rubber reinforced face nubs
- The raised-rubber water-dam traps dirt and absorbs moisture
- Safe for use in computer rooms and around electronic equipment
- 20% recycled rubber content
- Certified slip resistant by the National Floor Safety Institute

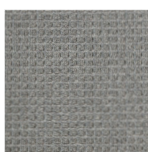
### SPECIFICATIONS

Uses	Wet or dry – indoor/outdoor areas
Materials	Solution Dyed Polypropylene and SBR Rubber
Thickness	8mm
Fibre Weight	620gsm

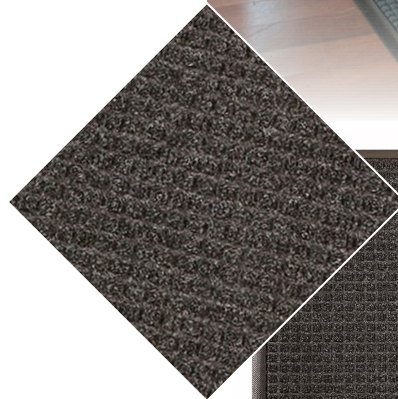
### COLOURS



Charcoal



Bluestone



### RECOMMENDED FOR

- Prestige Entrances
- Buildings
- Offices
- Corporate Lobbies
- Government
- Retail



**WE LOVE MATS**

1800 300 311 | [info@thematgroup.com.au](mailto:info@thematgroup.com.au) | [www.thematgroup.com.au](http://www.thematgroup.com.au)

