



New Linishall Accessories Planogram

| Part No. | Description |
|----------------|--|
| LB915X50-40G | Linishing Belt 915 x 50mm - 40G - Pack of 5pcs |
| LB915X50-60G | Linishing Belt 915 x 50mm - 60G - Pack of 5pcs |
| LB915X50-80G | Linishing Belt 915 x 50mm - 80G - Pack of 5pcs |
| LB915X50-120G | Linishing Belt 915 x 50mm - 120G - Pack of 5pcs |
| LB915X50-MIXED | Linishing Belt 915 x 50mm - Mixed Grit - Pack/5pcs |
| WW6 | Wire Wheel 6" x 3/4" (150mm x 20mm) |
| WW8 | Wire Wheel 8" x 1" (200mm x 25mm) |
| WW10 | Wire Wheel 10" x 1" (250mm x 25mm) |
| D-PSA-60G | Sanding Disc 180mm - PSA - 60G - pack/5 |
| D-PSA-80G | Sanding Disc 180mm - PSA - 80G - pack/5 |
| D-PSA-120G | Sanding Disc 180mm - PSA - 120G - pack/5 |
| D-PSA-MIXED | Sanding Disc 180mm - PSA - Mixed Grit - pack/5 |
| D-H&L-60G | Sanding Disc 180mm - Hook & Loop - 60G - pack/5 |
| D-H&L-80G | Sanding Disc 180mm - Hook & Loop - 80G - pack/5 |
| D-H&L-120G | Sanding Disc 180mm - Hook & Loop - 120G - pack/5 |
| D-H&L-MIXED | Sanding Disc 180mm - Hook & Loop - Mixed - pack/5 |
| D-H&L-PACK | 180mm Hook & Loop Converter Pack incl 5x Discs |
| LATS12 | Tapered Spindle set (LH&RH) M12 x 130mm |
| LATS16 | Tapered Spindle set (LH&RH) M16 x 145mm |
| LABC-GREEN | Buffing Compound - Green |
| LABC-GREY | Buffing Compound - Grey |
| LABC-RED | Buffing Compound - Red |
| LABC-WHITE | Buffing Compound - White |
| LAMLL150 | Polishing Mop Loose Leaf 150mm |
| LAMLL200 | Polishing Mop Loose Leaf 200mm |
| LAMST150 | Polishing Mop Stitched 150mm |
| LAMST200 | Polishing Mop Stitched 200mm |

Abrasive (Linishing) Belts

To suit all Linishall, and most other Belt Grinders.
Available in 40, 60, 80 & 120 grit

| Part No. | Description |
|----------------|-----------------------------------|
| LB915X50-40G | 915x50mm - 40G - Pack of 5pcs |
| LB915X50-60G | 915x50mm - 60G - Pack of 5pcs |
| LB915X50-80G | 915x50mm - 80G - Pack of 5pcs |
| LB915X50-120G | 915x50mm - 120G - Pack of 5pcs |
| LB915X50-MIXED | 915x50mm - Mixed Grit - Pack/5pcs |
| PB915X50-MED | Polishing Belt 915x50mm - Medium |



Aluminium Oxide Sanding Discs

Suits Linishall 915 Belt & Disc Grinding
Attachment and other brands.



Self Adhesive

Has a self-adhesive back for easy installation
and is available in 60, 80, & 120 grit.

| Part No. | Description |
|-------------|-----------------------------------|
| D-PSA-60G | 180mm - PSA - 60G - pack/5 |
| D-PSA-80G | 180mm - PSA - 80G - pack/5 |
| D-PSA-120G | 180mm - PSA - 120G - pack/5 |
| D-PSA-MIXED | 180mm - PSA - Mixed Grit - pack/5 |



Hook & Loop

Has a hook & loop back for easy installation
and is available in 60, 80, & 120 grit.

| Part No. | Description |
|-------------|--------------------------------------|
| D-H&L-60G | 180mm - Hook & Loop - 60G - pack/5 |
| D-H&L-80G | 180mm - Hook & Loop - 80G - pack/5 |
| D-H&L-120G | 180mm - Hook & Loop - 120G - pack/5 |
| D-H&L-MIXED | 180mm - Hook & Loop - Mixed - pack/5 |



Hook & Loop Conversion Disc

Available as Conversion Disc only,
or as a Starter Pack with converter
plus 5 assorted grit discs to suit



The Conversion Disc has adhesive on one side and "hooks" on the other to allow replacement of stick-on type abrasive discs with "Hook & Loop" backed ones.

- Permits easier disc changing, particularly when using varying grits on a job
- Fits LINISHALL Model 915 and all other machines taking a 180mm disc



| Part No. | Description |
|------------|--|
| D-H&L-CONV | Converter Disc 180mm (Hook - self adhesive back) |
| D-H&L-PACK | Converter Pack 180mm (1 x Conversion Disc, 5 x Assorted Sanding Discs) |

Wire Wheels

An industrial quality wheel made from crimped brass coated carbon steel wire. Suitable for general purpose cleaning, rust removal, deburring & surface preparation.

- The large number of wire strands gives higher working performance and longer life
- 32mm bore with a set of reducing bushes to suit most bench grinders
- The best performance is achieved by using light pressure, letting the wire strands do the work. Pressing hard against the brush dulls & breaks the strands reducing effective life. Reversing the wheel on the grinder regularly presents the sharper strand edge giving greater performance & wheel life

| Part | Wire Wheels |
|------|--------------------------|
| WW6 | 6" x 3/4" (150mm x 20mm) |
| WW8 | 8" x 1" (200mm x 25mm) |
| WW10 | 10" x 1" (250mm x 25mm) |

Grinding Wheels

In Coarse & Medium grits.
To suit bench grinders:
hang packed



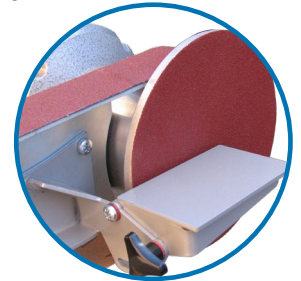
| Part | Wheel Size | Grit | Bore Size |
|-------------|--------------|--------|---------------|
| BG6-GW-36G | 150mm x 20mm | Coarse | 1/2" (12mm) |
| BG6-GW-60G | 150mm x 20mm | Medium | 1/2" (12mm) |
| BG8-GW-36G | 200mm x 25mm | Coarse | 5/8" (16mm) |
| BG8-GW-60G | 200mm x 25mm | Medium | 5/8" (16mm) |
| BG10-GW-36G | 250mm x 25mm | Coarse | 1.1/4" (32mm) |
| BG10-GW-60G | 250mm x 25mm | Medium | 1.1/4" (32mm) |

Mitre Table

Designed to fit the Model 915 Belt & Disc Grinding Attachment.

- Side tilting for stable grinding against disc.

Part No. **915TABLE**



Rubber Contact Wheels

- Grooved to create air flow for natural cooling effect
- Crowned to assist belt tracking
- Large size range to fit most Linishing machines or custom applications. Can be attached to a motor, or suitably powered grinder, and used in conjunction with a Backstand Idler



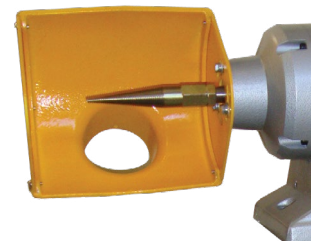
| Replacement Wheel | Wheel Size diameter x width | Suits | with Spindle |
|-------------------|-----------------------------|-----------------------|--------------|
| RCW420 | 100mm x 50mm (4" x 2") | 1220/50, 1520/50, 915 | |
| RCW421 | 100mm x 50mm (4" x 2") | 1220/50, 1520/50 | Y |
| RCW421-915 | 100mm x 50mm (4" x 2") | 915 only | Y |
| RCW440 | 100mm x 100mm (4" x 4") | 1520/100 | |
| RCW441 | 100mm x 100mm (4" x 4") | 1520/100 | Y |

Buff or Polishing Guard

Part No. **BG8-BUFFGUARD**

- Suits most 200mm (8") Grinders
- Fits either RH or LH side
- Includes Dust extraction port

(Does not include taper spindle shown)



Tapered Spindle Sets

To take polishing & buffing mops for Linishall 6" & 8" and the other branded grinders

- Tapered spindles replace the grinding wheel on a bench grinder to allow a polishing or buffing mop to be fitted. This set has one each for the left or right hand side of the grinder (the internal thread is accordingly LH or RH).
- The correct thread size (M12 or M16) should be chosen to suit the grinder shaft & nut thread size.
- The spindle has been counterbored to allow it to fit over the shaft diameter.

| Part No. | Description |
|----------|---|
| LATS12 | Tapered Spindle set (LH&RH) M12 x 130mm |
| LATS16 | Tapered Spindle set (LH&RH) M16 x 145mm |



Polishing Mops

A polishing (or buffing) mop can be fitted to a bench grinder using a tapered spindle. Used in conjunction with the appropriate grade of buffing compound a brighter or polished finish can be obtained.

The correct mop should be chosen according to the finish required. Stitched mops are used for more aggressive buffing for initial polishing or general purpose work. Loose leaf mops are used to achieve a higher gloss finish and finer polishing.

Only a small amount of buffing compound should be applied to the mop before polishing the material with light pressure. Repeated application of buffing compound is more effective & economical.

Ideally a different mop should be used for each grade of buffing compound to avoid cross contamination and possible aggressive polishing where a fine finish is required.

Buffing compound residue can be removed from the work at completion of the job with turpentine or methylated spirits.



| Part No. | Description |
|----------|--|
| LAMLL150 | LINISHALL Polishing Mop Loose Leaf 150mm |
| LAMLL200 | LINISHALL Polishing Mop Loose Leaf 200mm |
| LAMST150 | LINISHALL Polishing Mop Stitched 150mm |
| LAMST200 | LINISHALL Polishing Mop Stitched 200mm |

Polishing Compounds

Green Compound: High gloss finish on metal/allo (stainless steel, copper & brass)
- use with Loose Leaf Mop

Grey Compound: Quick removal of marks/rust/pitting
- use with Stitched Mop

Red Compound: General purpose metal/allo
- use with Stitched or Loose Leaf Mop

White Compound: Finishing & polishing aluminium and aluminium alloys
- use with Loose Leaf Mop



| Part No. | Description |
|------------|------------------------------------|
| LABC-GREEN | LINISHALL Buffing Compound - Green |
| LABC-GREY | LINISHALL Buffing Compound - Grey |
| LABC-RED | LINISHALL Buffing Compound - Red |
| LABC-WHITE | LINISHALL Buffing Compound - White |