

Submersible Pressure Pump BLUEDIVER

- > Compact
- > Auto on/off Float Switch
- > Overheating Protection
- > Stainless Steel Filter
- 🇮🇹 Designed in Italy

3
YEAR
WARRANTY



Adjustable Float



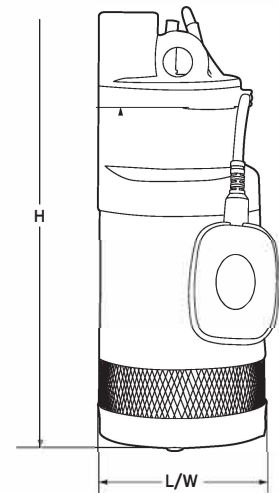
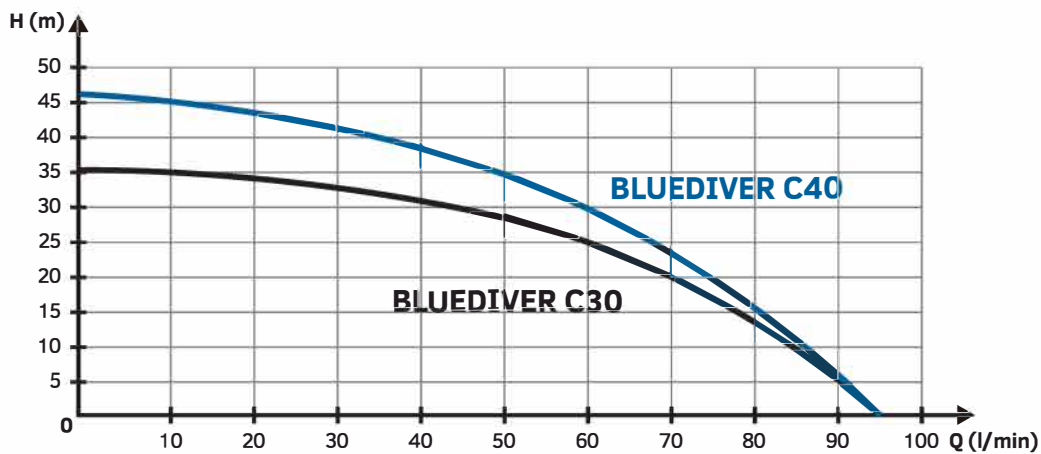
Stainless Steel Filter



Float



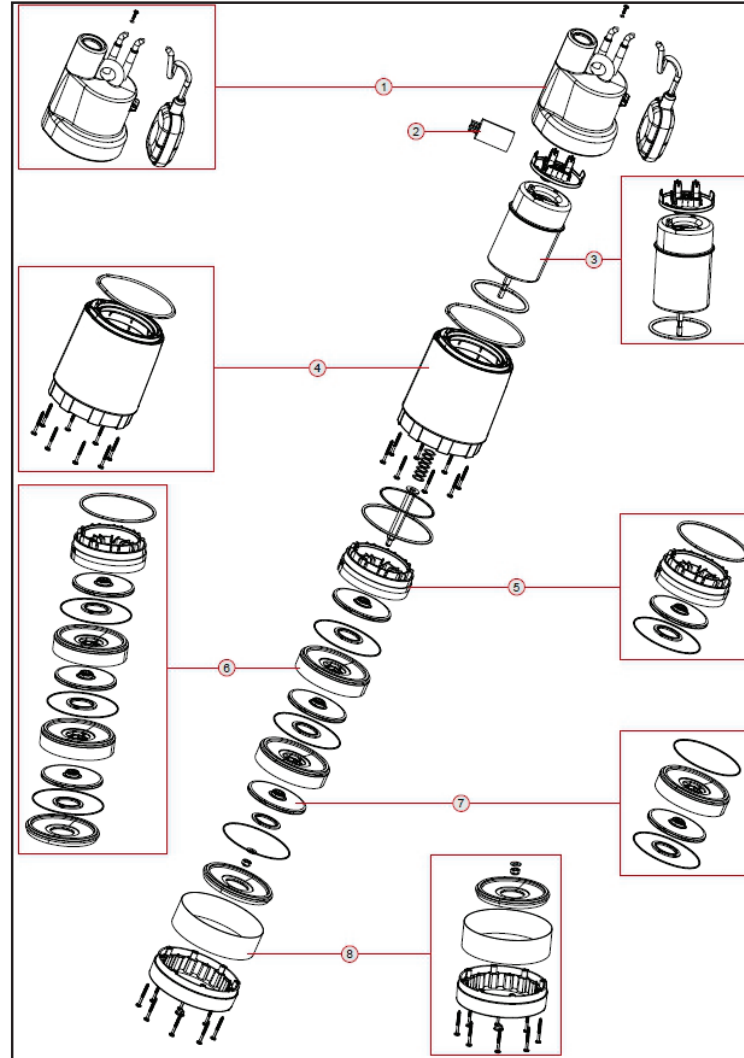
Model	BLUEDIVER C30	BLUEDIVER C40	
Electrical data	P1 Power consumption [W]	900	1.100
	P2 Pump consumption [W]	650	750
	Voltage [V]	1 ~ 220-240 AC	1 ~ 220-240 AC
	Frequency [Hz]	50	50
	Current [A]	3.8	4.8
	Capacitor μ F	12.5	12.5
	Capacitor Vc	450	450
	Rated speed [1/min]	2.850	2.850
Hydraulic data	Flow rate max. [l/min]	95	95
	Max. Pressure [Bar]	3.6	4.6
	Max. Head [m]	36	46
	Max. working pressure [bar]	6	6
	Max depth of immersion [m]	12	12
Range of use/materials	Length of Power Cable [m]	15	15
	Cable	H07 RNF	H07 RNF
	Pump International protection	IPX8	IPX8
	Insulation Class	F	F
	Liquid range Temperature [°C]	0 °C / +35 °C	0 °C / +35 °C
	Dimension of particles [mm]	clean water	clean water
	Max. Ambient Temperature [°C]	+40 °C	+40 °C
Dimensions / weight	L x W x H [mm]	150 x 150 x 400	150 x 150 x 400
	DNM GAS	1" F	1" F
	Box Dimensions l x w x h [cm]	23 x 19 x 46	23 x 19 x 46
	Net/Gross Weight [kg]	8.7/10	9/10.2
	Quantity for pallet [no.]	40	40





BlueDiver C30

SPARE PARTS LIST



N°	CODE	DESCRIPTION
1	SP00001904	(SP) PUMP COVER WIRED DEEP 2H PLUG SCHUKO
2	SPP1360003	CONDENSATORE 12.5UF V450
3	SP60153125	SPARE PARTS KIT - MOTOR ASS.Y H80 V230-50Hz W/C AISI30
4	SP00000513	(SP) PUMP BODY DEEP 3-4I BLU
5	SP60153114	(SP) GROUP DIFFUSERS SUPPORT
6	SP60153122	(SP) COMPL. HYDR 50Hz-Step 2
7	SP60153119	(SP) DIFFUSER + IMPELLER
8	SP00000512	(SP) BASE