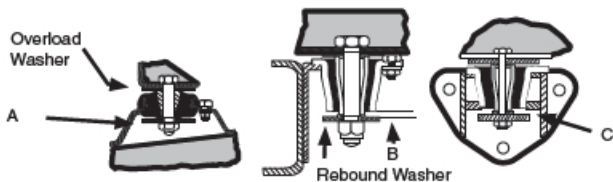


TYPICAL METHODS OF INSTALLATION FOR METACONE ISOLATORS

A. Note; Washer must be clear of rebound buffer in static load condition. Spacer washers should be introduced if necessary to provide adequate clearance.

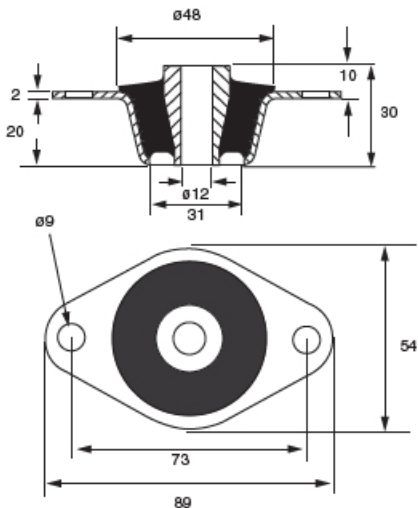
B. Ensure clearance between rebound washer and outer metal under static load.

C. On Part No. M17146 it is essential that lower end of outer metal is located in bracket which also provides reaction face for rebound buffer.

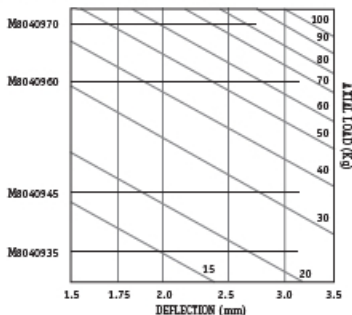


M80409

NOTE: M80409 may or may not require overload and rebound washers depending on the installation. (supplied separately)



SELECTION CHART



DUROMETER

Duro	Stamped into flange
35	
45	
60	
70	

Part No.	No. of fixing holes	Overload Washer	Rebound Washer	Centre Bolt Size & Assembly Torque	Weight Kg
M80409	2	M18409A	M15286	M12 40Nm	0.1

All properties nominal, contact Mackay for Technical advice

All Dimensions in Millimetres



© Mackay Consolidated Industries Pty Ltd 2011
www.mackayrubber.com.au