

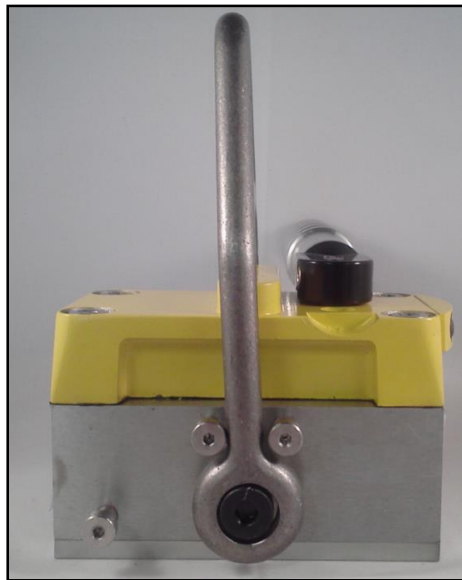


Magswitch Technology, Inc.
 8774 Yates Dr. Suite 140
 Westminster, CO 80031
 Magswitch.com.au
 303-468-0662

Magswitch MLAY600x2

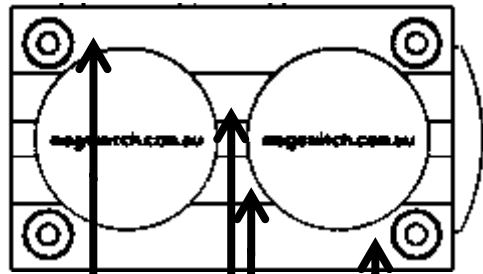
P/N: 8100360

Magswitch LAY series magnets utilize different size magnets to attain a certain field depth or saturation of magnetic field. This allows for greater working loads and increased control over larger work pieces. The MLAY600x2 is a lightweight heavy lifting magnet ideal for fitting in tight spots and lifting thin sheet. It features a unique single swivel hook for lifting from horizontal to vertical. With customizable pole shoes to fit almost any application, the LAY is a great all around tool that is perfect for picking pipe and round as well as large plate steel.



WARNING!
Do Not Operate Unless In
Contact With Ferrous Target

SPECIFICATIONS	
P/N: 8100360 - MAGSWITCH MLAY600x2	
Max Breakaway*	1100 lbs/500 kg
Safe Working Load*	367 lbs/167 kg
Full Saturation Thickness	1/2" / 9.5mm
Max Safe Shear*	200 lbs/90.9 kg
Minimum Thickness for De-Stack	1/2" / 9.5mm
Net Weight	9.5 lbs/4.3 kg
Mounting Thread	M6x1.0
Overall Height	170.9 mm
Magnetic Pole Footprint	119x71.12 mm



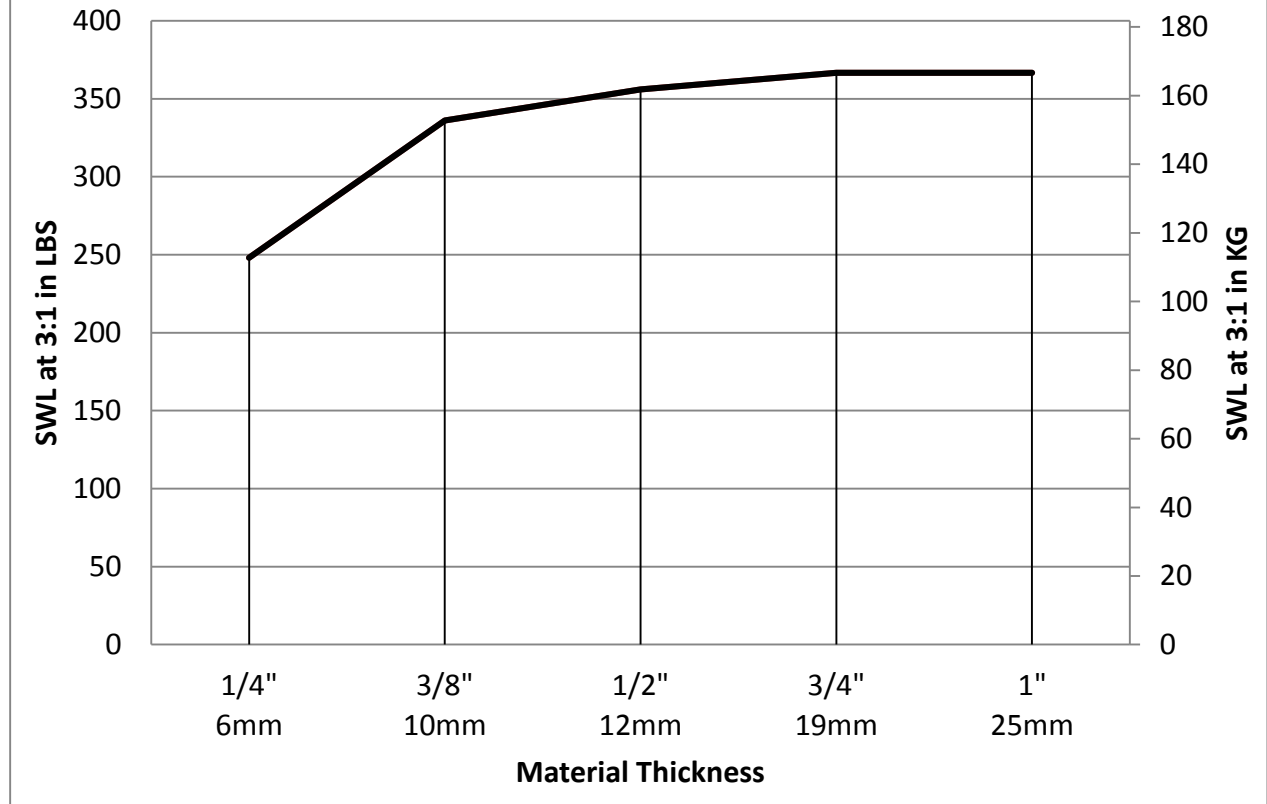
WORKING SURFACE



Part Number 110675
 Revision Date: April 19, 2012

* Max Breakaway determined in laboratory environment on 2" thick SAE1018 Steel with surface roughness 63 micro inches. Many factors contribute to the actual breakaway force in each application. Always test the magswitch in each application before deployment. Refer to the magswitch information booklet for more information.

Magswitch MLAY600x2 Safe Working Load

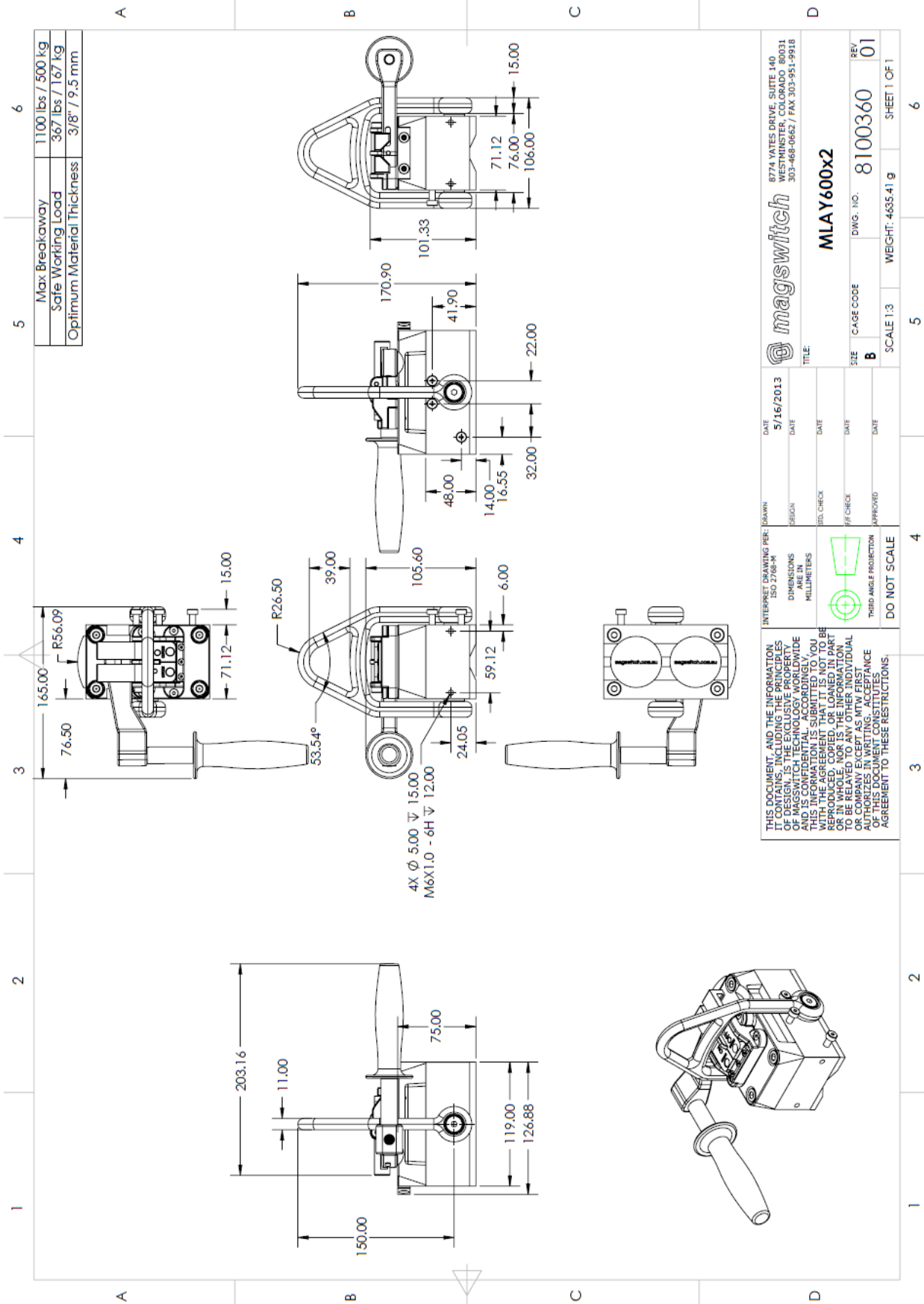


Part Number 110675
Revision Date: April 19, 2012

* Max Breakaway determined in laboratory environment on 2" thick SAE1018 Steel with surface roughness 63 micro inches. Many factors contribute to the actual breakaway force in each application. Always test the magswitch in each application before deployment. Refer to the magswitch information booklet for more information.



Part Number 110675
 Revision Date: April 19, 2012



THIS DOCUMENT, AND THE INFORMATION CONTAINED HEREIN, IS THE EXCLUSIVE PROPERTY OF MAGSWITCH TECHNOLOGY, WORLDWIDE AND IS CONFIDENTIAL ACCORDINGLY, IT IS NOT TO BE REPRODUCED, COPIED, OR LOANED IN PART OR IN WHOLE, NOR IS THE INFORMATION TO BE DISCLOSED TO ANY INDIVIDUAL OR COMPANY EXCEPT AS MTW FIRST AUTHORIZES IN WRITING. ACCEPTANCE OF THIS DOCUMENT CONSTITUTES AGREEMENT TO THESE RESTRICTIONS.

INTERNET DRAWING PER: ISAWIN
 DATE: 5/16/2013
 DIMENSIONS: ISO 2768-M
 UNITS: MILLIMETERS
 THIRD ANGLE PROJECTION
 DO NOT SCALE

magswitch 8774 YATES DRIVE, SUITE 140
 WESTMINSTER, COLORADO 80031
 303-468-0662 / FAX 303-951-9918
MLAY600x2
 DATE: DATE: DATE: DATE: DATE: DATE:
 DESIGN: DESIGN: DESIGN: DESIGN: DESIGN: DESIGN:
 SER. CHECK: SER. CHECK: SER. CHECK: SER. CHECK: SER. CHECK: SER. CHECK:
 APPROVED: APPROVED: APPROVED: APPROVED: APPROVED: APPROVED:
 SCALE 1:3 WEIGHT: 4635.41 g SHEET 1 OF 1