

Pro Bender 35T

Model: PROBENDER



Hydraulic Bending Machine 35 ton force / 415v, 3HP

There are many bending tooling options available for the machine to provide a wide range of bending operations. Optional accessories such as Pipe Bending and Tool Notching can further increase the versatility of the machine. This multi-function aspect allows the ProBender 35t Bending Machine to meet the diversified needs of the metal forming industry.

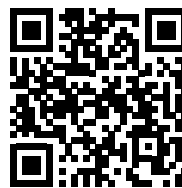
- Fast and easy bending of a wide range of materials
- High accuracy and control of bends
- Reduction in physical effort required
- High quality construction throughout .

Mild Steel Bending Capacity:

- Flat Bar: 100mm x 10mm / 60mm x 12mm / 50mm x 16mm
- Square Bar: 25mm x 25mm
- Round Bar: Ø25mm
- Shipping: 300kg / 1350 x 700 x 980mm



Probender 35T & Accessories Video



Optional Accessories

See Over Page



BRAMLEY Probender 35T Optional Accessories

Pro Bender 35T Optional Attachments

Model: PROBENDER-PB-ATTACH Pipe Bending Attachment

- Comprises of a Pipe Bending frame & the BRAMLEY aluminium alloy elliptical formers for bending pipe from 1/2" - 2" N.B.



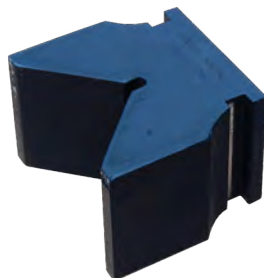
Model: PROBENDER-RS-ATTACH Rebar Bending & Straightening Attachment

- For bending round & reinforcing bar up to 32mm dia.
- Can also be used for straightening up to 40mm dia. round bar or 50 x 25mm flat bar etc



Model: PROBENDER-LGV-ATTACH Large V bending Attachment

- Enables bending of larger sections of flat bar such as 75 x 16mm or 50 x 20mm

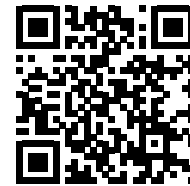


Model: PROBENDER-NOTCH Pipe & Tube Notching Attachment

- For easy notching of pipes for lateral weld connections.
- Different sizes dies available for Tube. 1", 1-1/2", & 2"
- Different sizes dies available for Pipe. 1-1/4", 1-1/2", & 2"



Scan for Video



Model: PROBENDER-TBSQ-ATTACH Square Tube Bending Attachment

- Bender Frame and Formers for square tube bending from 1/2" - 1" nominal size across flats.

Scan for Video



Model: PROBENDER-TBRD-ATTACH Round Tube Bending Attachment

- Bender Frame and Formers for round tube bending from 1/2" - 1" nominal size across flats.

