

4 WAY EVACUATION VALVES - BSP



M4WV19 (3/4"), M4WV25 (1"), M4WV38 (1 1/2")

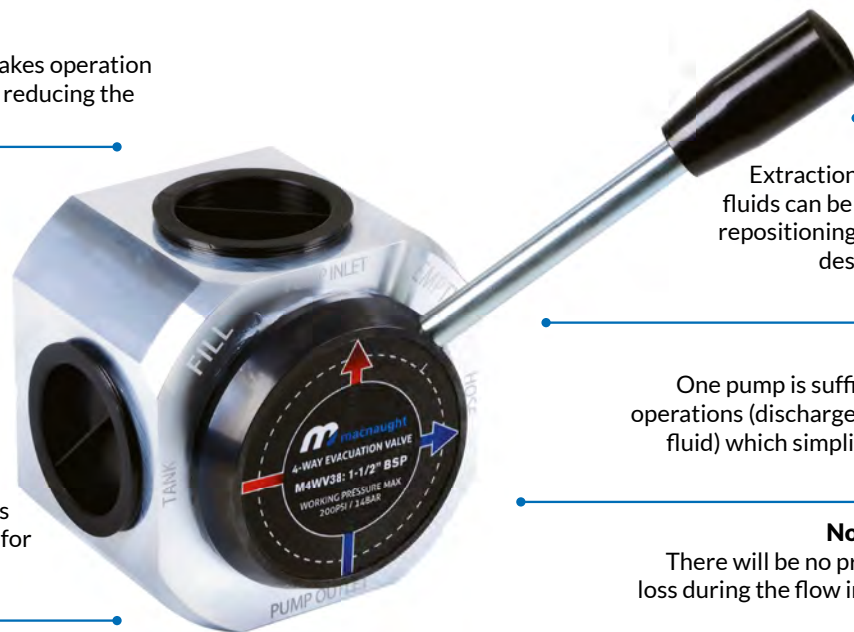
4 Way Evacuation Valve is used for the extraction and discharge of fluids which reduces the necessity of multiple valves controlling fluid flow. The fluid can be waste oil, hydraulic, gear and engine oil, ATF or coolants. The valve makes the operation easier for the transfer of fluid by just shifting the lever which reverses the flow of the fluid from filling to discharging the waste oil/fluids or vice versa. This valve requires only one pump for both the operation and is simplified without the hose/pipe connections being altered.

Easy Operation

The 4 Way Evacuation Valve makes operation easy for the transfer of fluid by reducing the necessity for multiple valves.

Easy Installation

Four pre-drilled mounting holes - M8x1.25 have been provided for convenient installation.



Reverse Flow

Extraction and Discharge of fluids can be controlled by just repositioning the handle to the desired requirement.

Single Pump

One pump is sufficient for both the operations (discharge and extraction of fluid) which simplifies the plumbing.

No Flow restriction

There will be no pressure or volume loss during the flow in either direction.

FEATURES & BENEFITS

- Easy operation for the transfer of fluid
- Four pre-drilled mounting holes - M8x1.25 for easy installation
- Reverse flow controlled by just repositioning the handle to the desired requirement
- Single pump for both the operations (discharge and extraction of fluid)
- No flow restriction for pressure or volume loss during the flow in either direction

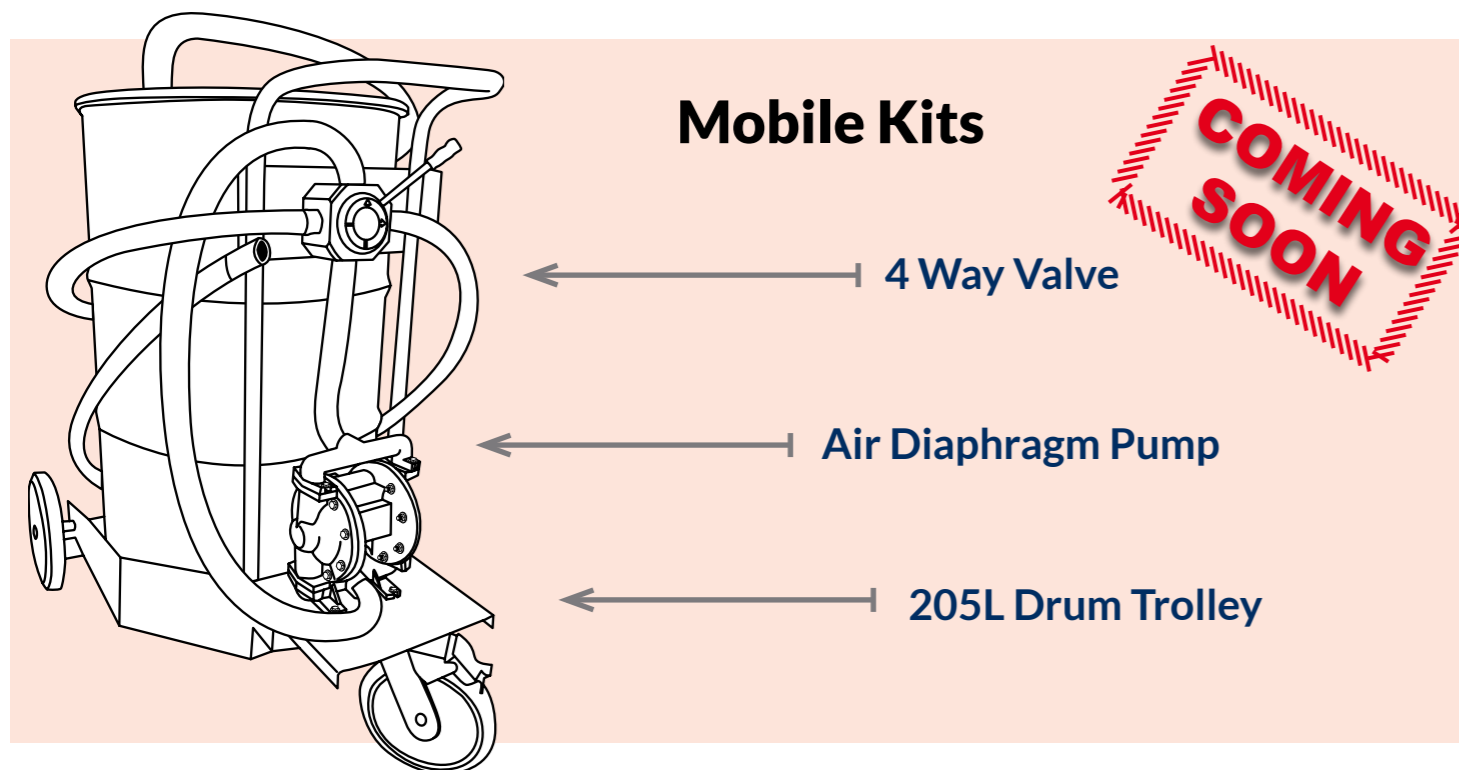
APPLICATION

- Transfer Fluids from bulk supply containers to daily operational tanks.
- Extraction and discharge of various types of fluids on lube/service trucks.
- Extraction of fluids from engines set in remote locations- irrigation fields/mining sites

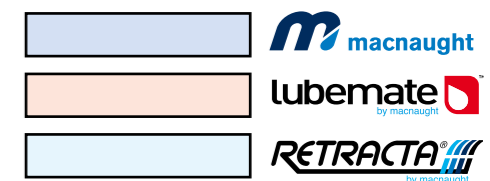
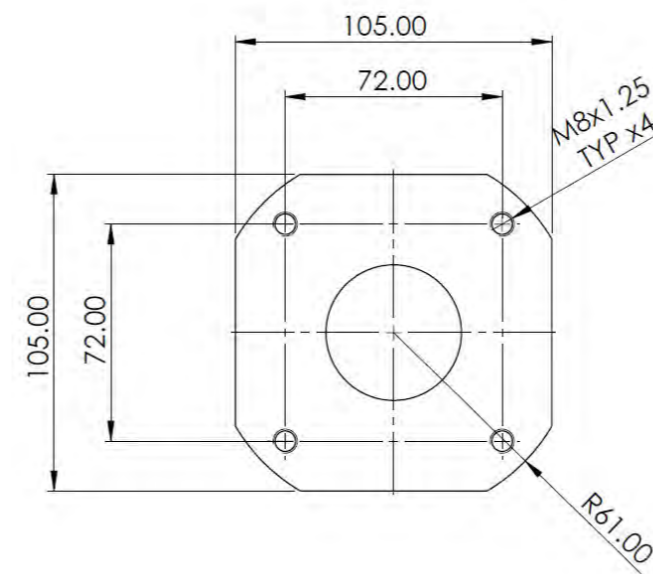
SUGGESTED EQUIPMENT OPTIONS AVAILABLE WITH MACNAUGHT

| DIAPHRAGM PUMP | | 4 WAY VALVE | REELS (optional) | | | TROLLEY (optional) |
|---|--|--|-------------------------|-----------------------|------------------------|----------------------------|
| DDP19 2 YEARS MACNAUGHT WARRANTY | L-DDP19 12 MONTH MACNAUGHT WARRANTY | M4WV19 - 3/4" 12 MONTH MACNAUGHT WARRANTY | FHO1915-01* | | | TR205 - Trolley |
| DDP25 2 YEARS MACNAUGHT WARRANTY | L-DDP25 12 MONTH MACNAUGHT WARRANTY | M4WV25 - 1" 12 MONTH MACNAUGHT WARRANTY | MDTP2510-01* | L-DTP2515* | FCD2515-01* | |
| DDP38 2 YEARS MACNAUGHT WARRANTY | N/A | M4WV38 - 1 1/2" 12 MONTH MACNAUGHT WARRANTY | FCD3815-02* | | | |

* The suction line of the pump should be as close as possible to the suction point.



Mounting Pattern

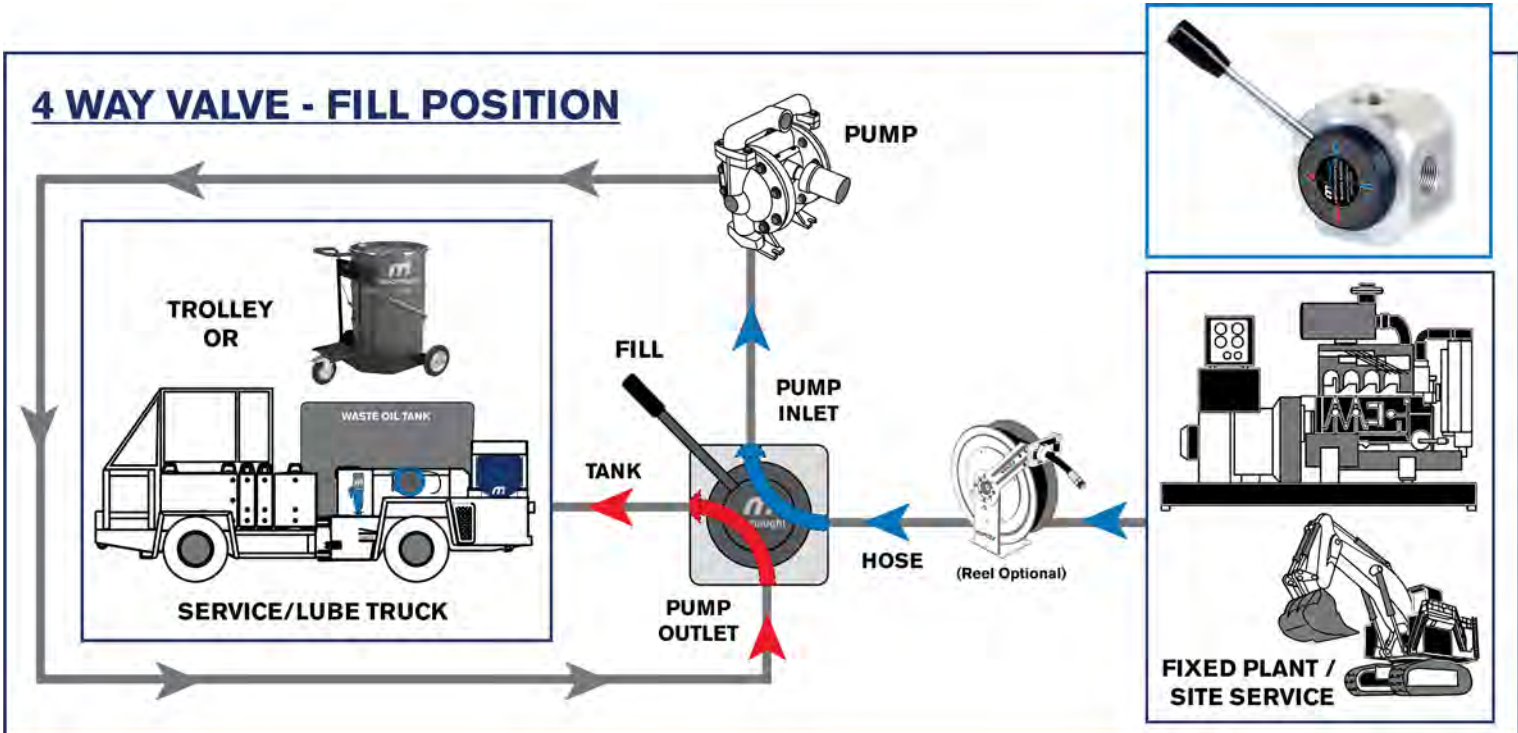


TECHNICAL SPECIFICATIONS

- Max Working Pressure - 200psi (14bar)
- M4WV19: 3/4" BSP Inlet/Outlet Connections
- M4WV25: 1" BSP Inlet/Outlet Connections
- M4WV38: 1 1/2" BSP Inlet/Outlet Connections
- Mounting Hole thread size - M8x1.25
- Dimensions - 105mm x 105mm x 90mm
- Weight - 1 kg (2.2lbs)

4 WAY EVACUATION VALVE TYPICAL APPLICATION

4 WAY VALVE - FILL POSITION



4 WAY VALVE - EMPTY POSITION

