



NEW PRODUCT RELEASE



750050 AdBlue® 3/4" Hose Reel

The 750050 AdBlue® hose reel designed for the distribution of urea is constructed of a hot-galvanised steel structure which is moulded and coated with electrostatic polyester powder resistant to UV rays and oxidation.

The 750050 is an automatic rewind hose reel and the hose can be locked at any desired length. The hose guide arms can be fixed in three different positions allowing for wall, floor or ceiling mounting. Also suitable for the distribution of antifreeze, windshield liquid, water-based solutions such as detergents or disinfectants, the 750050 AdBlue® 3/4" hose reel cannot be used with petrol, solvents, flammable or chemical agent or highly corrosive liquids.

PRODUCT SPECIFICATIONS, FEATURES AND BENEFITS

Supplied with 15m x 3/4" EPDM hose, swivel and hose tail fitting

Inlet with swivel: 3/4" BSP

Outlet hose tail: 3/4" BSP

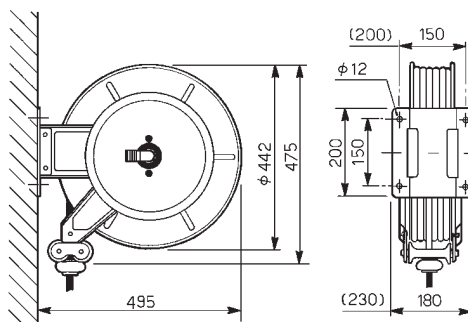
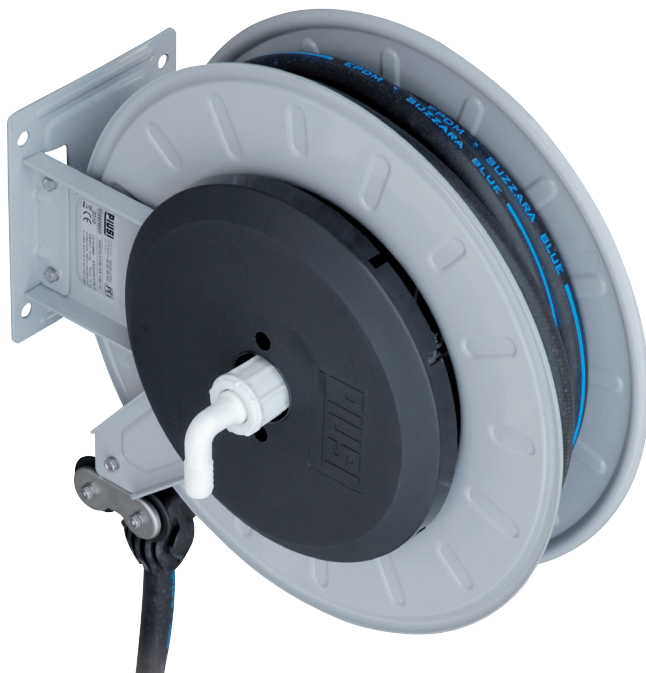
Spool width: 140mm

Rated to 140psi

Pressure loss of 14.5psi @ 35LPM

Weight: 25kg

Dimensions: 475mm x 200mm x 495mm



ORDERING INFORMATION

750050
AdBlue® 3/4" Hose Reel

RELEASE DATE

May 2011