

NEW PRODUCT



INFORMATION

HR30070

## EL Series Hot Water Hose Reel

August 2019

The Alemlube EL Series HR30070 hot water hose reel is a quality hose handling, retrieval and storage system with crimped hose end, integral carry handle and detachable mounting bracket enabling 180° hose reel rotation. Manufactured with high density impact resistant and UV stabilised polypropylene cover, the HR30070 Hybrid Polymer features a positive latching system that automatically locks the hose at the desired length and the heavy duty internal spring assembly easily retrieves the hose when partially or fully extended.

Suitable for use in the agricultural, automotive, manufacturing, contractor and transport sectors, the HR30070 hot water hose reel increases safety by reducing rewind speed by up to 80%.

Mountable on the wall or ceiling, the EL Series HR30070 features a constant speed control device ensuring safe and accurate rewinding.



### PRODUCT SPECIFICATIONS, FEATURES AND BENEFITS

Speed control device makes automatic rewind safe at all times

Supplied complete with 20m x 10mm ID hybrid polymer hose and 0.9m lead in hose

3/8" BSP(T) inlet and outlet threads

Highflow swivel and fluid path

Max. Working pressure of 300psi (20bar)

-40° to + 60° hose working temperature

Automatic and positive latching system

Hose guide system rewinds the hose without kinks

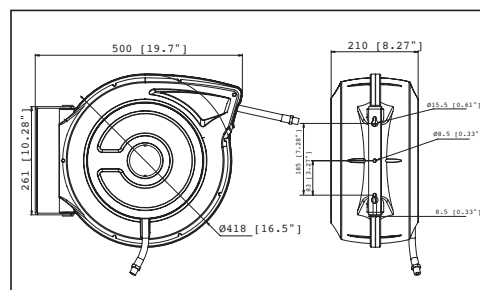
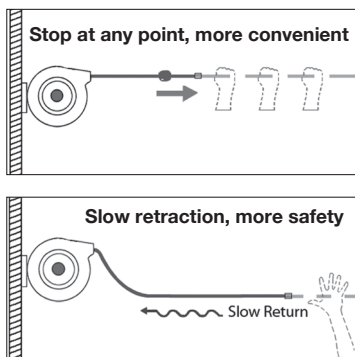
Constant speed control device ensures safe and accurate rewinding

Detachable steel mounting bracket enables 180° hose reel rotation

Convenient carry handle facilitates portable use

Can be wall or ceiling mounted

Lightweight, compact and durable construction



### ORDERING INFORMATION

HR30070 Hot Water Hose Reel

