

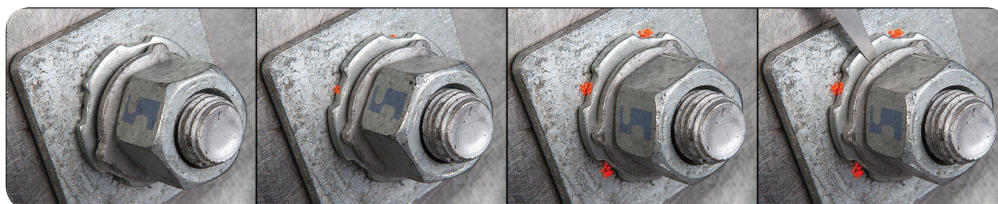
Did You Know

about our...



HOBSON PRESS

Squirter Washers



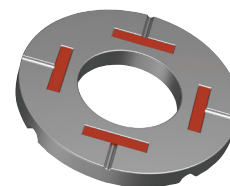
Squirter DTI - Direct Tension Indicator

Tighten the bolt until the orange silicone appears from under the DTI squirt locations, then stop tightening. The number of squirts should be at least equal to the number of bumps on the DTI, less one.

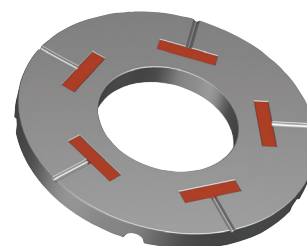
SQUIRTER DTI WASHER

MECHANICAL GALVANISED / ASTM F959M / CLASS 10.9

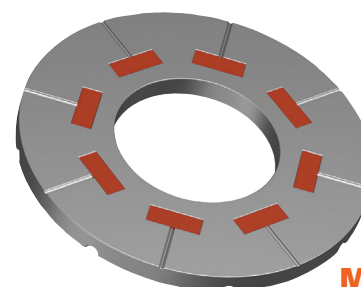
| Part | Size | OD (mm) | ID (mm) | Thickness (mm) | Pack |
|----------|------|------------|------------|-------------------|------|
| WD10MM12 | M12 | 30.2 | 13.4 | 3.0 | 100 |
| WD10MM16 | M16 | 36.8 | 16.9 | 3.6 | 100 |
| WD10MM20 | M20 | 46.0 | 21.1 | 3.6 | 100 |
| WD10MM24 | M24 | 55.2 | 25.3 | 4.0 | 100 |
| WD10MM30 | M30 | 69.0 | 31.6 | 4.8 | 50 |
| WD10MM36 | M36 | 82.8 | 37.9 | 4.8 | 50 |



M16



M20



M36

SQUIRTER DTI WASHER

PLAIN / ASTM F959M / CLASS 10.9

| Part | Size | OD (mm) | ID (mm) | Thickness (mm) | Pack |
|----------|------|------------|------------|-------------------|------|
| WD10PM12 | M12 | 30.2 | 13.4 | 3.0 | 100 |
| WD10PM16 | M16 | 36.8 | 16.9 | 3.6 | 100 |
| WD10PM20 | M20 | 46.0 | 21.1 | 3.6 | 100 |
| WD10PM24 | M24 | 55.2 | 25.3 | 4.0 | 100 |
| WD10PM30 | M30 | 69.0 | 31.6 | 4.8 | 50 |
| WD10PM36 | M36 | 82.8 | 37.9 | 4.8 | 50 |

1601211DYK