



**HOBSON**

**LOW-TENSILE**



get tough

# **Low Tensile Stock List 2011**



# Hobson Engineering Co. Pty. Ltd

A.B.N. 38 000 289 958

## Quality Fasteners Since 1935

### Sydney

10 Clay Place  
Eastern Creek NSW 2766

Ph: (02) 8818 0222

Fax: (02) 9620 1850

email: salesnsw@hobson.com.au

### Brisbane

62 Murdoch Circuit  
Acacia Ridge Qld 4110

Ph: (07) 3273 0777

Fax: (07) 3711 4551

email: salesqld@hobson.com.au

### Melbourne

Unit 1 155 Abbots Road  
Dandenong South Vic 3175

Ph: (03) 9797 3333

Fax: (03) 9799 3081

email: salesvic@hobson.com.au

### Perth

133 Beringarra Ave  
Malaga WA 6090

Ph: (08) 9241 9888

Fax: (08) 9248 8806

email: saleswa@hobson.com.au

### Tasmania Agent

R.M. Daniels & Co P/L

29 Mornington Road

Mornington Tas 7018

Ph: (03) 6244 7455

Fax: (03) 6244 7317

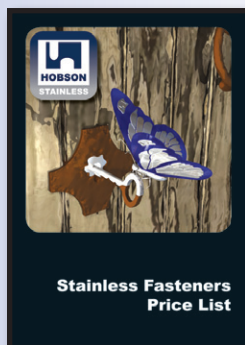
[www.hobson.com.au](http://www.hobson.com.au)

Published by Hobson Engineering Co. Pty. Ltd.  
P.O. Box 320  
Horsley Park N.S.W. 2175

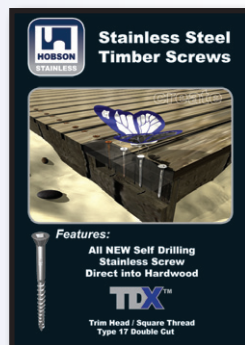
Look out for other released Hobson Publications.



Stainless Hardware  
Price List



Stainless Fasteners  
Price List



Stainless Steel  
Timber Screws



High Tensile  
Price List



Cyclone  
Price List

All rights reserved. Hobson Engineering Co. Pty. Ltd. is the owner of the copyright subsisting in this publication. Other than permitted by the Copyright Act, no part of this publication can be reproduced, copied or transmitted, in any form or by any means (electric, mechanical, photocopying, recording, storage in a retrieval system or otherwise), without the prior written consent of Hobson Engineering Co. Pty. Ltd. Hobson Engineering Co. Pty. Ltd. will vigorously pursue any breach of its copyright.

This publication is distributed on the basis and understanding that the publisher is not responsible for the results of any actions taken on the basis of information in this publication, nor for any error in or omission from this publication. The publisher expressly disclaims all and any liability and responsibility to any person, whether a reader of this publication or not, in respect of anything, and the consequences of anything, done or omitted to be done by any such person in reliance, whether wholly or partially, upon the whole or any part of the contents of this publication. Without limiting the generality of the foregoing the publisher accepts no liability for any loss or damage either direct or consequential arising out of or in relation to the use or application of the information or products referred to herein.

# Index



Allthread		2
Allthread Accessories		8
Hex Nuts		10
Washers		14
Purlin / Fascia Assemblies		16
Hex Bolt & Nut		17
Hex Set Screw		24
Cup Head Bolt & Nut		26
XL Hex Bolt & Nut		30
Coach Screw		31
Lag / Eye & Hook Screw		32
U Bolts		33
Eye / Hook & J Bolts		35
Ball Bearing Hinges		38
Commercial Hardware		42
Technical	Breaking Strength / Tightening Torque Proof Load / Thread Table	45



LOW-TENSILE

# Allthread Metric

Hot Dip Galvanise  
Zinc Plate  
Plain



## METRIC ALLTHREAD 1MTR CLASS 4.6 DIN975

Part	Size	Pack	Pack Wgt (Kg)	Stock		
				HDG	Z/P	PLN
ASMS?CM031000	M3	20	0.80		✓	
ASMS?CM041000	M4	20	1.40		✓	
ASMS?CM051000	M5	20	2.40		✓	
ASMS?CM061000	M6	20	4.40		✓	✓
ASMS?CM081000	M8	20	6.20	✓	✓	✓
ASMS?CM101000	M10	20	9.80	✓	✓	✓
ASMS?CM121000	M12	10	7.10	✓	✓	✓
ASMS?CM141000	M14	1	0.98			✓
ASMS?CM161000	M16	10	13.10	✓	✓	✓
ASMS?CM181000	M18	1	1.60			✓
ASMS?CM201000	M20	5	10.25	✓	✓	✓
ASMS?CM221000	M22	1	2.50			✓
ASMS?CM241000	M24	5	14.75	✓	✓	✓
ASMS?CM271000	M27	1	3.80	✓		✓
ASMS?CM301000	M30	1	4.68	✓	✓	✓
ASMS?CM331000	M33	1	5.70	✓		✓
ASMS?CM361000	M36	1	6.82	✓	✓	✓
ASMS?CM391000	M39	1	8.00	✓		✓
ASMS?CM421000	M42	1	9.30	✓	✓	✓
ASMS?CM481000	M48	1	12.20	✓	✓	✓
ASMS?CM561000	M56	1	17.00	✓	✓	✓
ASMS?CM641000	M64	1	22.60	✓		✓

## METRIC ALLTHREAD 3MTR CLASS 4.6 DIN975

Part	Size	Pack	Pack Wgt (Kg)	Stock		
				HDG	Z/P	PLN
ASMS?CM063000	M6	20	10.40		✓	
ASMS?CM083000	M8	10	9.40	✓	✓	✓
ASMS?CM103000	M10	10	14.60	✓	✓	✓
ASMS?CM123000	M12	5	10.70	✓	✓	✓
ASMS?CM163000	M16	5	19.70	✓	✓	✓
ASMS?CM203000	M20	1	6.22	✓	✓	✓
ASMS?CM243000	M24	1	8.94	✓	✓	✓
ASMS?CM303000	M30	1	14.11	✓	✓	✓
ASMS?CM363000	M36	1	20.62	✓	✓	✓
ASMS?CM423000	M42	1	27.95	✓		✓
ASMS?CM483000	M48	1	36.68	✓		✓



? = G: Hot Dip Galvanise (HDG)    Z: Zinc Plate (Z/P)    Y: Zinc Yellow Passivate (ZYP)    P: Plain (PLN)

# Allthread Metric

Plain  
Brass



## METRIC LEFT HAND ALLTHREAD 1MTR CLASS 4.6 DIN975

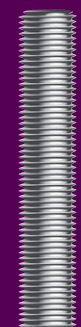
Part	Size	Pack	Pack Wgt (Kg)	Stock PLN
ASMSPDM061000	M6	20	4.40	✓
ASMSPDM081000	M8	20	6.20	✓
ASMSPDM101000	M10	20	9.80	✓
ASMSPDM121000	M12	10	7.20	✓
ASMSPDM161000	M16	10	13.10	✓
ASMSPDM201000	M20	5	10.25	✓
ASMSPDM241000	M24	5	14.75	✓
ASMSPDM301000	M30	1	4.68	✓
ASMSPDM361000	M36	1	6.82	✓
ASMSPDM421000	M42	1	9.30	✓
ASMSPDM481000	M48	1	12.20	✓

## METRIC FINE PITCH ALLTHREAD 1MTR CLASS 4.6 DIN975

Part	Size	Pitch	Pack	Pack Wgt (Kg)	Stock PLN
ASMSPFM101000	M10	1.25	20	10.20	✓
ASMSPFM121000	M12	1.50	10	7.50	✓
ASMSPFM121000F	M12	1.25	10	7.50	✓
ASMSPFM201000	M20	1.50	5	10.25	✓

## METRIC ALLTHREAD 1MTR BRASS DIN975

Part	Size	Pack	Pack Wgt (Kg)	Stock BRASS
ABBRPCM031000	M3	10	0.40	✓
ABBRPCM041000	M4	10	0.70	✓
ABBRPCM051000	M5	10	1.20	✓
ABBRPCM061000	M6	10	2.20	✓
ABBRPCM081000	M8	10	3.10	✓
ABBRPCM101000	M10	10	4.90	✓
ABBRPCM121000	M12	5	3.55	✓
ABBRPCM161000	M16	5	6.55	✓
ABBRPCM201000	M20	1	2.05	✓
ABBRPCM241000	M24	1	2.95	✓



? = G: Hot Dip Galvanise (HDG)    Z: Zinc Plate (Z/P)    Y: Zinc Yellow Passivate (ZYP)    P: Plain (PLN)



LOW-TENSILE

# Allthread BSW

Zinc Plate  
Plain



## BSW ALLTHREAD 3FT AS2451 (STRENGTH & THREAD)

Part	Size	Pack	Pack Wgt (Kg)	Stock	
				Z/P	PLN
ASMS?W0120914	1/8"	20	0.80	✓	
ASMS?W0150914	5/32"	20	1.20	✓	
ASMS?W0180914	3/16"	20	1.80	✓	
ASMS?W0250914	1/4"	20	3.40	✓	✓
ASMS?W0310914	5/16"	20	5.40	✓	✓
ASMS?W0370914	3/8"	20	7.80	✓	✓
ASMS?W0430914	7/16"	10	5.40	✓	✓
ASMS?W0500914	1/2"	10	7.10	✓	✓
ASMS?W0560914	9/16"	10	8.90	✓	✓
ASMS?W0620914	5/8"	10	11.40	✓	✓
ASMS?W0750914	3/4"	5	8.35	✓	✓
ASMS?W0870914	7/8"	5	11.50	✓	✓
ASMS?W1000914	1"	5	15.10	✓	✓
ASMS?W1120914	1 1/8"	1	3.86	✓	✓
ASMS?W1250914	1 1/4"	1	4.50	✓	✓
ASMS?W1370914	1 3/8"	1	5.76		✓
ASMS?W1500914	1 1/2"	1	6.94	✓	✓
ASMS?W1750914	1 3/4"	1	10.10		✓
ASMS?W2000914	2"	1	13.60		✓

## BSW ALLTHREAD 12FT AS2451 (STRENGTH & THREAD)

Part	Size	Pack	Pack Wgt (Kg)	Stock	
				Z/P	PLN
ASMS?W0183658	3/16"	20	7.06	✓	
ASMS?W0253658	1/4"	20	13.25	✓	✓
ASMS?W0313658	5/16"	10	8.90	✓	✓
ASMS?W0373658	3/8"	10	15.60	✓	✓
ASMS?W0503658	1/2"	5	14.25	✓	✓
ASMS?W0623658	5/8"	1	4.65	✓	✓
ASMS?W0753658	3/4"	1	6.75	✓	✓
ASMS?W0873658	7/8"	1	9.26	✓	✓
ASMS?W1003658	1"	1	12.15	✓	✓
ASMS?W1123658	1 1/8"	1	15.60	✓	✓
ASMS?W1253658	1 1/4"	1	19.38	✓	✓
ASMS?W1503658	1 1/2"	1	28.04	✓	✓



? = G: Hot Dip Galvanise (HDG)    Z: Zinc Plate (Z/P)    Y: Zinc Yellow Passivate (ZYP)    P: Plain (PLN)

# Allthread BSW / BSF

Zinc Plate  
Plain



## BSW LEFT HAND ALLTHREAD 3FT AS2451 (STRENGTH & THREAD)

Part	Size	Pack	Pack Wgt (Kg)	Stock PLN
ASMSPX0250914	1/4"	20	3.40	✓
ASMSPX0310914	5/16"	20	5.40	✓
ASMSPX0370914	3/8"	20	7.80	✓
ASMSPX0500914	1/2"	10	7.10	✓
ASMSPX0620914	5/8"	5	11.40	✓
ASMSPX0750914	3/4"	5	8.35	✓
ASMSPX0870914	7/8"	1	2.31	✓
ASMSPX1000914	1"	1	3.00	✓
ASMSPX1120914	1 1/8"	1	3.86	✓
ASMSPX1250914	1 1/4"	1	4.50	✓
ASMSPX1500914	1 1/2"	1	6.94	✓

## BSF ALLTHREAD 3FT AS2451 (STRENGTH & THREAD)

Part	Size	Pack	Pack Wgt (Kg)	Stock PLN
ASMSPS0250914	1/4"	20	3.40	✓
ASMSPS0310914	5/16"	20	5.40	✓
ASMSPS0370914	3/8"	20	7.80	✓
ASMSPS0500914	1/2"	10	7.10	✓
ASMSPS0620914	5/8"	10	11.40	✓
ASMSPS0750914	3/4"	5	8.35	✓
ASMSPS0870914	7/8"	1	2.31	✓
ASMSPS1000914	1"	1	3.00	✓
ASMSPS1120914	1 1/8"	1	3.86	✓
ASMSPS1250914	1 1/4"	1	4.50	✓
ASMSPS1500914	1 1/2"	1	6.94	✓

## BSW ALLTHREAD 4FT AS2451 (STRENGTH & THREAD)

Part	Size	Pack	Pack Wgt (Kg)	Stock Z/P
ASMSZW0371219	3/8"	20	10.60	✓
ASMSZW0501219	1/2"	10	9.50	✓



? = G: Hot Dip Galvanise (HDG)    Z: Zinc Plate (Z/P)    Y: Zinc Yellow Passivate (ZYP)    P: Plain (PLN)



LOW-TENSILE

# Allthread BSW / ACME

Zinc Plate  
Brass  
Plain

## BSW ALLTHREAD STUDS AS2451 (STRENGTH & THREAD)

Part	Size	Length	Pack	Pack Wgt (Kg)	Stock Z/P
ASMSZW0250019	1/4"	19	1000	3.44	✓
ASMSZW0250025	1/4"	25	1000	4.52	✓
ASMSZW0250038	1/4"	38	1000	6.88	✓
ASMSZW0250051	1/4"	51	1000	9.23	✓
ASMSZW0250064	1/4"	64	1000	11.58	✓
ASMSZW0250076	1/4"	76	500	6.88	✓
ASMSZW0250102	1/4"	102	500	9.23	✓

## BSW ALLTHREAD 3FT BRASS AS3501

Part	Size	Pack	Pack Wgt (Kg)	Stock BRASS
ABBRPW0120914	1/8"	10	0.40	✓
ABBRPW0150914	5/32"	10	0.60	✓
ABBRPW0180914	3/16"	10	0.80	✓
ABBRPW0250914	1/4"	10	1.70	✓
ABBRPW0310914	5/16"	10	2.70	✓
ABBRPW0370914	3/8"	10	3.90	✓
ABBRPW0430914	7/16"	5	2.70	✓
ABBRPW0500914	1/2"	5	3.55	✓
ABBRPW0560914	9/16"	5	4.45	✓
ABBRPW0620914	5/8"	5	5.70	✓
ABBRPW0750914	3/4"	1	1.67	✓
ABBRPW0870914	7/8"	1	2.30	✓
ABBRPW1000914	1"	1	3.02	✓

## ACME ALLTHREAD 12FT GRADE 1 (6 TPI)

Part	Size	Pack	Pack Wgt (Kg)	Stock PLN
ASMSPA0503658	1/2"	1	2.85	✓
ASMSPA0623658	5/8"	1	4.65	✓
ASMSPA0753658	3/4"	1	6.75	✓
ASMSPA0873658	7/8"	1	9.20	✓
ASMSPA1003658	1"	1	12.15	✓
ASMSPA1123658	1 1/8"	1	15.68	✓
ASMSPA1253658	1 1/4"	1	19.20	✓
ASMSPB0623658	5/8" LEFT HAND	1	4.65	✓
ASMSPB1003658	1" LEFT HAND	1	12.15	✓

? = G: Hot Dip Galvanise (HDG)    Z: Zinc Plate (Z/P)    Y: Zinc Yellow Passivate (ZYP)    P: Plain (PLN)



# Allthread UNC / UNF / BA

Plain



## UNC ALLTHREAD 3FT GRADE 1 IF1136C

Part	Size	Pack	Pack Wgt (Kg)	Stock PLN
ASMSPC0180914	3/16"	20	1.80	✓
ASMSPC0250914	1/4"	20	3.40	✓
ASMSPC0310914	5/16"	20	5.40	✓
ASMSPC0370914	3/8"	20	7.80	✓
ASMSPC0430914	7/16"	10	5.40	✓
ASMSPC0500914	1/2"	10	7.00	✓
ASMSPC0620914	5/8"	10	11.60	✓
ASMSPC0750914	3/4"	5	8.35	✓
ASMSPC0870914	7/8"	5	11.55	✓
ASMSPC1000914	1"	5	15.15	✓
ASMSPC1120914	1 1/8"	1	3.86	✓
ASMSPC1250914	1 1/4"	1	4.50	✓
ASMSPC1500914	1 1/2"	1	6.94	✓

## UNF ALLTHREAD 3FT GRADE 1 IF1136C

Part	Size	Pack	Pack Wgt (Kg)	Stock PLN
ASMSPF0180914	3/16"	20	1.80	✓
ASMSPF0250914	1/4"	20	3.40	✓
ASMSPF0310914	5/16"	20	5.60	✓
ASMSPF0370914	3/8"	20	8.00	✓
ASMSPF0430914	7/16"	10	5.40	✓
ASMSPF0500914	1/2"	10	6.80	✓
ASMSPF0620914	5/8"	10	11.60	✓
ASMSPF0750914	3/4"	5	8.35	✓
ASMSPF0870914	7/8"	1	2.31	✓
ASMSPF1000914	1" (12TPI)	1	3.03	✓
ASMSPF1000914F	1" (14TPI)	1	3.03	✓
ASMSPF1120914	1 1/8"	1	3.86	✓
ASMSPF1250914	1 1/4"	1	4.50	✓
ASMSPF1500914	1 1/2"	1	6.94	✓

## BA ALLTHREAD 3FT AS2451 (STRENGTH & THREAD)

Part	Size	Pack	Pack Wgt (Kg)	Stock PLN
ASMSPS4BA0914	4 BA	1	0.02	✓
ASMSPS2BA0914	2 BA	1	0.09	✓
ASMSPS0BA0914	0 BA	1	0.16	✓

? = G: Hot Dip Galvanise (HDG)    Z: Zinc Plate (Z/P)    Y: Zinc Yellow Passivate (ZYP)    P: Plain (PLN)





LOW-TENSILE

# Allthread Accessories

Hot Dip Galvanise  
Zinc Plate / Zinc Yellow Passivate



## METRIC HEX COUPLER MILD STEEL

Part	Size	Length	A/F	Pack	Pack Wgt (Kg)	Stock	
						HDG	ZYP
AXHCMS?CM06	M6	25	10	100	1.20		✓
AXHCMS?CM08	M8	25	13	100	2.00		✓
AXHCMS?CM10	M10	40	17	100	5.70	✓	✓
AXHCMS?CM12	M12	40	19	100	6.50	✓	✓
AXHCMS?CM16	M16	50	24	50	6.20	✓	✓
AXHCMS?CM20	M20	50	30	25	4.72	✓	✓
AXHCMS?CM24	M24	50	36	20	5.58	✓	✓
AXHCMS?CM30	M30	60	46	5	2.80	✓	✓
AXHCMS?CM36	M36	70	55	5	4.60	✓	✓



## BSW HEX COUPLER MILD STEEL

Part	Size	Length	A/F	Pack	Pack Wgt (Kg)	Stock	
						Z/P	
AXHCMSZW025	1/4"	25	10	100	1.30	✓	
AXHCMSZW031	5/16"	25	12	100	1.50	✓	
AXHCMSZW037	3/8"	40	14	100	3.25	✓	
AXHCMSZW050	1/2"	40	19	100	6.30	✓	
AXHCMSZW062	5/8"	50	23	50	5.50	✓	
AXHCMSZW075	3/4"	50	26	25	5.17	✓	
AXHCMSZW087	7/8"	50	32	20	5.00	✓	

? = G: Hot Dip Galvanise (HDG)    Z: Zinc Plate (Z/P)    Y: Zinc Yellow Passivate (ZYP)    P: Plain (PLN)

# Allthread Accessories

Zinc Plate / Zinc Yellow Passivate



## METRIC WIND BRACING "D" BRACKET MALLEABLE CAST IRON

Part	Size	Pack	Pack Wgt (Kg)	Stock
AXWWCIZCM16	M12/M16	50	11.00	✓
AXWWCIZCM20	M20	40	10.00	✓
AXWWCIZCM24	M24	20	12.50	✓
AXWWCIZCM30	M30	10	8.00	✓



## ALLTHREAD CUTTER



Part	Size	Description	Stock
XTBAB-M10	M10	Cutter Standard Style	✓
XTRAB-M10	M10	Cutter Ratchet Style	✓



M8 cutting dies also available.

Ratchet style displayed.



? = G: Hot Dip Galvanise (HDG)    Z: Zinc Plate (Z/P)    Y: Zinc Yellow Passivate (ZYP)    P: Plain (PLN)



LOW-TENSILE



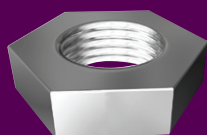
### METRIC HEX NUT CLASS 8 AS1112.1

Part	Size	Carton	Pack	Pack Wgt (Kg)	Stock		
					HDG	Z/P	PLN
NH08ZCM04	M4	12000	1000	1.25		✓	
NH08ZCM05	M5	12000	1000	1.50		✓	
NH08?CM06	M6	6000	1000	2.00	✓	✓	
NH08?CM08	M8	3000	500	2.50	✓	✓	
NH08?CM10	M10	1200	200	1.85	✓	✓	
NH08?CM12	M12	1200	200	3.09	✓	✓	
NH08?CM16	M16	200	200	7.00	✓	✓	✓



### METRIC HEX NUT CLASS 5 AS1112.3 (7H)

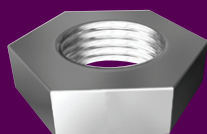
Part	Size	Pack	Pack Wgt (Kg)	Stock		
				HDG	Z/P	PLN
NH05?CM20	M20	100	6.70	✓	✓	✓
NH05?CM24	M24	100	11.25	✓	✓	✓
NH05?CM27	M27	75	11.25	✓		✓
NH05?CM30	M30	50	11.59	✓		✓
NH05?CM33	M33	50	14.42	✓		✓
NH05?CM36	M36	25	9.65	✓		✓
NH05?CM39	M39	25	12.49	✓		✓
NH05?CM42	M42	20	12.05	✓		✓
NH05?CM48	M48	15	13.90	✓		✓



### METRIC HEX LOCK NUT CLASS 8 AS1112.4



Part	Size	Pack	Pack Wgt (Kg)	Stock
				HDG
NL08GCM12	M12	100	0.93	✓
NL08GCM16	M16	100	2.14	✓



### METRIC HEX LOCK NUT CLASS 5 AS1112.4



Part	Size	Pack	Pack Wgt (Kg)	Stock
				HDG
NL05GCM20	M20	50	1.98	✓
NL05GCM24	M24	50	3.44	✓
NL05GCM30	M30	25	3.71	✓
NL05GCM36	M36	10	2.80	✓

? = G: Hot Dip Galvanise (HDG)    Z: Zinc Plate (Z/P)    Y: Zinc Yellow Passivate (ZYP)    P: Plain (PLN)

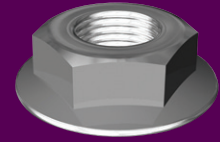
# Hex Nuts

Zinc Yellow Passivate  
Plain



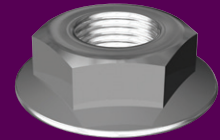
## METRIC SERRATED FLANGE HEX NUTS CASE HARDENED DIN6923

Part	Size	Pack	Pack Wgt (Kg)	Stock
NFMSYCM06	M6	500	1.50	✓
NFMSYCM08	M8	500	3.00	✓
NFMSYCM10	M10	200	2.60	✓
NFMSYCM12	M12	100	1.90	✓
NFMSYCM16	M16	200	9.40	✓



## UNC SERRATED FLANGE HEX NUTS CASE HARDENED IFI D-21

Part	Size	Pack	Pack Wgt (Kg)	Stock
NFMSYC025	1/4"	500	1.50	✓
NFMSYC031	5/16"	500	3.00	✓
NFMSYC037	3/8"	200	2.60	✓



## ACME (6 TPI) HEX NUTS CLASS 5 HOBSON STD

Part	Size	Pack	Pack Wgt (Kg)	Stock
NHMSPA050	1/2"	1	0.03	✓
NHMSPA062	5/8"	1	0.05	✓
NHMSPA075	3/4"	1	0.09	✓
NHMSPA087	7/8"	1	0.13	✓
NHMSPA100	1"	1	0.19	✓
NHMSPA112	1 1/8"	1	0.26	✓
NHMSPA125	1 1/4"	1	0.37	✓
NHMSPB062	5/8" LEFT HAND	1	0.05	✓
NHMSPB100	1" LEFT HAND	1	0.19	✓



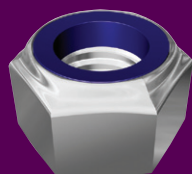
? = G: Hot Dip Galvanise (HDG)    Z: Zinc Plate (Z/P)    Y: Zinc Yellow Passivate (ZYP)    P: Plain (PLN)



LOW-TENSILE

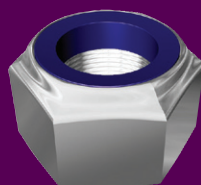
# Nylon Insert Hex Nuts

Zinc Yellow Passivate



## METRIC NYLON INSERT HEX NUT CLASS 8 DIN985

Part	Size	Pack	Pack Wgt (Kg)	Stock ZYP
NN08YCM05	M5	200	0.28	✓
NN08YCM06	M6	200	0.48	✓
NN08YCM08	M8	200	1.02	✓
NN08YCM10	M10	200	2.12	✓
NN08YCM12	M12	100	1.72	✓
NN08YCM14	M14	100	2.60	✓
NN08YCM16	M16	100	3.40	✓
NN08YCM18	M18	100	4.50	✓
NN08YCM20	M20	50	3.25	✓



## METRIC FINE PITCH NYLON INSERT HEX NUT CLASS 8 DIN985

Part	Size	Pitch	Pack	Pack Wgt (Kg)	Stock ZYP
NN08YFM08	M8	1.00	200	1.02	✓
NN08YFM10	M10	1.25	200	2.12	✓
NN08YFM10F	M10	1.00	200	2.12	✓
NN08YFM12	M12	1.50	100	1.72	✓
NN08YFM12F	M12	1.25	100	1.72	✓
NN08YFM16	M16	1.50	100	3.40	✓
NN08YFM20	M20	1.50	50	3.25	✓

? = G: Hot Dip Galvanise (HDG)    Z: Zinc Plate (Z/P)    Y: Zinc Yellow Passivate (ZYP)    P: Plain (PLN)

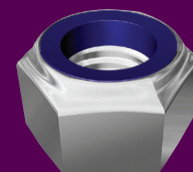
# Nylon Insert Hex Nuts

Zinc Yellow Passivate



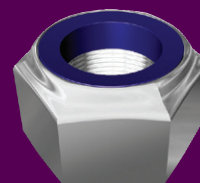
## METRIC NYLON INSERT HEX NUT CLASS 6 DIN985

Part	Size	Pack	Pack Wgt (Kg)	Stock
NN06YCM22	M22	25	1.88	✓
NN06YCM24	M24	25	2.50	✓
NN06YCM27	M27	25	4.05	✓
NN06YCM30	M30	25	5.30	✓
NN06YCM33	M33	10	3.17	✓
NN06YCM36	M36	10	4.15	✓
NN06YCM39	M39	5	2.50	✓
NN06YCM42	M42	5	3.14	✓
NN06YCM45	M45	5	3.85	✓
NN06YCM48	M48	5	5.00	✓



## METRIC FINE PITCH NYLON INSERT HEX NUT CLASS 6 DIN985

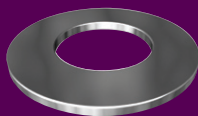
Part	Size	Pitch	Pack	Pack Wgt (Kg)	Stock
NN06YFM24	M24	2.00	25	2.50	✓
NN06YFM30	M30	2.00	25	5.30	✓
NN06YFM36	M36	3.00	10	4.15	✓



? = G: Hot Dip Galvanise (HDG)    Z: Zinc Plate (Z/P)    Y: Zinc Yellow Passivate (ZYP)    P: Plain (PLN)



LOW-TENSILE



# Washers

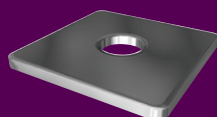
Hot Dip Galvanise  
Zinc Plate / Zinc Yellow Passivate  
Plain

## ROUND WASHER MILD STEEL (NEAREST STANDARD BS3410 & AS1237)

Part	Size	OD	ID	Thk	Carton Pack		Pack Wgt (Kg)	Stock		
		(mm)	(mm)	(mm)				HDG	Z/P	PLN
WRMS?M06	M6	16.0	6.7	1.40	10000	500	0.83	✓	✓	
WRMS?M08	M8	19.0	8.8	1.60	6000	500	1.28	✓	✓	
WRMS?M10	M10	22.5	10.5	2.00	3000	500	2.40	✓	✓	
WRMS?M12	M12	27.5	13.2	2.25	1600	200	1.72	✓	✓	
WRMS?M16	M16	33.5	17.2	2.75	1200	200	2.96	✓	✓	✓
WRMS?M20	M20	38.0	21.0	3.00	900	150	2.61	✓	✓	✓
WRMS?M22	7/8"	46.5	23.5	3.00	400	50	1.58	✓		✓
WRMS?M24	M24	52.0	26.0	4.00	300	25	1.20	✓	✓	✓
WRMS?M27	1 1/8"	62.0	31.0	4.00	300	25	1.30	✓		✓
WRMS?M30	M30	58.0	33.0	4.00	200	25	1.32	✓	✓	✓
WRMS?M33	1 1/4"	63.0	35.0	4.00	150	25	1.58	✓		✓
WRMS?M36	M36	70.0	39.0	5.00	150	25	2.46	✓		✓
WRMS?M39	1 1/2"	77.0	41.0	5.00	120	10	1.36	✓		✓
WRMS?M42	M42	77.0	45.0	5.00	120	10	1.20	✓		✓
WRMS?M45	1 3/4"	90.0	45.0	6.00	80	10	1.96	✓		✓
WRMS?M48	M48	90.0	51.0	6.00	80	10	1.79	✓		✓
WRMS?M52	2"	100.0	54.0	6.00	60	10	2.46	✓		✓
WRMS?M56	M56	119.0	61.5	7.00	10	10	4.23	✓		✓
WRMS?M64	M64	125.0	69.5	7.00	10	10	4.00	✓		✓

Suitable for use with Metric & Imperial Commercial Grade Bolts

## METRIC SQUARE WASHER MILD STEEL HOBSON SPEC



Part	Size	ID	Side Length	Thk	Pack	Pack Wgt (Kg)	Stock	
		(mm)	(mm)	(mm)			HDG	ZYP
WSMS?M10038030	M10	11.0	38	3	200	6.98	✓	
WSMS?M10050030	M10	11.0	50	3	200	10.00	✓	
WSMS?M12038030	M12	13.0	38	3	200	6.88	✓	
WSMS?M12050030	M12	13.0	50	3	200	9.95	✓	✓
WSMS?M12050050	M12	13.0	50	5	100	9.95		✓
WSMS?M14050030	M14	14.5	50	3	100	9.15	✓	
WSMS?M16050050	M16	17.0	50	5	100	8.65	✓	✓
WSMS?M16065050	M16	17.0	65	5	100	15.00	✓	✓
WSMS?M20065050	M20	21.0	65	5	50	7.50	✓	
WSMS?M20075060	M20	21.0	75	6	50	15.00	✓	
WSMS?M24075060	M24	25.0	75	6	50	13.00	✓	

? = G: Hot Dip Galvanise (HDG)    Z: Zinc Plate (Z/P)    Y: Zinc Yellow Passivate (ZYP)    P: Plain (PLN)



# Spring Washers

Hot Dip Galvanise

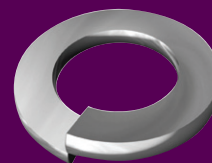
Zinc Plate

Zinc Yellow Passivate



## METRIC FLAT SECTION SPRING WASHER MILD STEEL DIN127B

Part	Size	OD	Thk	Width	Pack	Pack Wgt (Kg)	Stock		
		(mm)	(mm)	(mm)			HDG	Z/P	ZYP
WRMS?SM03	M3	6.2	0.8	1.3	200	0.04		✓	✓
WRMS?SM04	M4	7.6	0.9	1.5	200	0.05		✓	✓
WRMS?SM05	M5	9.2	1.2	1.8	200	0.09		✓	✓
WRMS?SM06	M6	11.8	1.6	2.5	200	0.18		✓	✓
WRMS?SM08	M8	14.8	2.0	3.0	200	0.34	✓	✓	✓
WRMS?SM10	M10	18.1	2.2	3.5	200	0.55	✓	✓	✓
WRMS?SM12	M12	21.1	2.5	4.0	200	0.82	✓	✓	✓
WRMSZSM14	M14	24.1	3.0	4.5	200	1.25		✓	
WRMS?SM16	M16	27.4	3.5	5.0	200	1.82	✓	✓	✓
WRMS?SM20	M20	33.6	4.0	6.0	100	1.58	✓	✓	✓
WRMS?SM24	M24	40.0	5.0	7.0	100	2.69	✓	✓	✓
WRMSGSM30	M30	48.2	6.0	8.0	25	1.19	✓		



## METRIC SQUARE SECTION SPRING WASHER MILD STEEL DIN7980

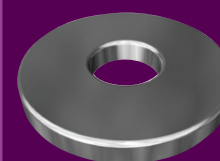
Part	Size	OD	Thk	Gap	Pack	Pack Wgt (Kg)	Stock	
		(mm)	(mm)	(mm)			Z/P	ZYP
WRMS?SQM04	M4	7.0	1.2	2.4	200	0.04	✓	✓
WRMS?SQM05	M5	8.8	1.6	3.2	200	0.08	✓	✓
WRMS?SQM06	M6	9.9	1.6	3.2	200	0.12	✓	✓
WRMS?SQM08	M8	12.7	2.0	4.0	200	0.23	✓	✓
WRMS?SQM10	M10	16.0	2.5	5.0	200	0.44	✓	✓
WRMS?SQM12	M12	18.0	2.5	5.0	200	0.49	✓	✓
WRMS?SQM14	M14	21.1	3.0	6.0	200	0.81	✓	
WRMS?SQM16	M16	24.4	3.5	7.0	200	1.26	✓	
WRMS?SQM20	M20	30.6	4.5	9.0	100	1.20	✓	
WRMS?SQM24	M24	35.9	5.0	10.0	100	1.85	✓	



## METRIC PANEL WASHER MILD STEEL HOBSON SPEC



Part	Size	OD	ID	Thk	Pack	Pack Wgt (Kg)	Stock
		(mm)	(mm)	(mm)			Z/P
WPMSZM20	M20	60.0	21.0	4.0	25	3.85	✓



? = G: Hot Dip Galvanise (HDG)    Z: Zinc Plate (Z/P)    Y: Zinc Yellow Passivate (ZYP)    P: Plain (PLN)



LOW-TENSILE

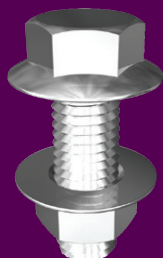
# Purlin / Fascia Assemblies

Zinc Plate



## PURLIN HEX BOLT, NUT & 2 WASHER KIT CLASS 4.6 / CLASS 5 HOBSON SPEC (ASSEMBLED)

Part	Size	Length	Pack	Pack Wgt (Kg)	Pallet	Stock Z/P
KBHMSZCM120030	M12	30	150	11.40	7,200	✓



## PURLIN HEX FLANGE BOLT & NUT KIT CLASS 4.6 / CLASS 5 HOBSON SPEC (ASSEMBLED)

Part	Size	Length	Pack	Pack Wgt (Kg)	Pallet	Stock Z/P
KBFMSZCM120030	M12	30	150	10.92	7,200	✓



## FASCIA HEX BOLT & NUT KIT CLASS 4.6 / CLASS 5 HOBSON SPEC (ASSEMBLED)

Part	Size	Length	Pack	Pack Wgt (Kg)	Pallet	Stock Z/P
KBAMSZCM120030	M12	30	150	11.40	7,200	✓



? = G: Hot Dip Galvanise (HDG)    Z: Zinc Plate (Z/P)    Y: Zinc Yellow Passivate (ZYP)    P: Plain (PLN)

# Hex Bolt & Nut

Hot Dip Galvanise  
Zinc Plate



## HEX BOLT & NUT KIT CLASS 4.6 AS1111.1 / CLASS 5 AS1112.3 (7H)

Part	Size	Length	Pack	Pack Wgt (Kg)	Stock	
					HDG	Z/P
KBH46?CM060020	M6	20	200	1.65	✓	✓
KBH46?CM060025	M6	25	200	1.85	✓	✓
KBH46?CM060030	M6	30	200	2.06	✓	✓
KBH46?CM060035	M6	35	200	2.20		✓
KBH46?CM060040	M6	40	200	2.27	✓	✓
KBH46?CM060045	M6	45	200	2.60		✓
KBH46?CM060050	M6	50	200	2.47	✓	✓
KBH46?CM060060	M6	60	150	2.60		✓
KBH46?CM060065	M6	65	150	2.78	✓	✓
KBH46?CM060070	M6	70	150	2.80		✓
KBH46?CM060075	M6	75	150	3.09	✓	✓
KBH46?CM060080	M6	80	150	3.10		✓
KBH46?CM060090	M6	90	150	3.40		✓
KBH46?CM060100	M6	100	150	3.70		✓



## HEX BOLT & NUT KIT CLASS 4.6 AS1111.1 / CLASS 5 AS1112.3 (7H)

Part	Size	Length	Pack	Pack Wgt (Kg)	Stock	
					HDG	Z/P
KBH46?CM080020	M8	20	200	3.40	✓	✓
KBH46?CM080025	M8	25	200	3.71	✓	✓
KBH46?CM080030	M8	30	200	4.12	✓	✓
KBH46?CM080035	M8	35	200	4.64	✓	✓
KBH46?CM080040	M8	40	200	4.94	✓	✓
KBH46?CM080045	M8	45	150	3.90		✓
KBH46?CM080050	M8	50	150	4.22	✓	✓
KBH46?CM080055	M8	55	150	4.50		✓
KBH46?CM080060	M8	60	150	4.90		✓
KBH46?CM080065	M8	65	150	5.15	✓	✓
KBH46?CM080070	M8	70	100	3.50		✓
KBH46?CM080075	M8	75	100	3.91	✓	✓
KBH46?CM080080	M8	80	100	4.00	✓	✓
KBH46?CM080090	M8	90	100	4.43	✓	✓
KBH46?CM080100	M8	100	100	4.94	✓	✓
KBH46?CM080120	M8	120	100	5.67	✓	✓
KBH46?CM080130	M8	130	100	5.90	✓	✓
KBH46?CM080150	M8	150	100	6.50	✓	✓



? = G: Hot Dip Galvanise (HDG)    Z: Zinc Plate (Z/P)    Y: Zinc Yellow Passivate (ZYP)    P: Plain (PLN)



LOW-TENSILE



# Hex Bolt & Nut

Hot Dip Galvanise  
Zinc Plate

## HEX BOLT & NUT KIT CLASS 4.6 AS1111.1 / CLASS 5 AS1112.3 (7H)

Part	Size	Length	Pack	Pack Wgt (Kg)	Stock	
					HDG	Z/P
KBH46?CM100020	M10	20	150	4.43	✓	✓
KBH46?CM100025	M10	25	150	4.74	✓	✓
KBH46?CM100030	M10	30	150	5.25	✓	✓
KBH46?CM100035	M10	35	150	5.77	✓	✓
KBH46?CM100040	M10	40	150	6.18	✓	✓
KBH46?CM100045	M10	45	150	6.70	✓	✓
KBH46?CM100050	M10	50	75	3.61	✓	✓
KBH46?CM100055	M10	55	75	3.70		✓
KBH46?CM100060	M10	60	75	4.02	✓	✓
KBH46?CM100065	M10	65	75	4.22	✓	✓
KBH46?CM100070	M10	70	75	4.53	✓	✓
KBH46?CM100075	M10	75	75	4.74	✓	✓
KBH46?CM100080	M10	80	75	4.94	✓	✓
KBH46?CM100090	M10	90	50	3.61	✓	✓
KBH46?CM100100	M10	100	50	3.91	✓	✓
KBH46?CM100110	M10	110	50	4.22	✓	✓
KBH46?CM100120	M10	120	50	4.53	✓	✓
KBH46?CM100130	M10	130	50	4.84	✓	✓
KBH46?CM100140	M10	140	50	5.15	✓	✓
KBH46?CM100150	M10	150	50	5.36	✓	✓
KBH46?CM100170	M10	170	100	11.74	✓	
KBH46?CM100180	M10	180	75	9.58	✓	
KBH46?CM100200	M10	200	75	10.40	✓	
KBH46?CM100220	M10	220	75	10.71	✓	
KBH46?CM100240	M10	240	75	11.54	✓	
KBH46?CM100260	M10	260	75	12.26	✓	
KBH46?CM100300	M10	300	50	9.48	✓	

? = G: Hot Dip Galvanise (HDG)    Z: Zinc Plate (Z/P)    Y: Zinc Yellow Passivate (ZYP)    P: Plain (PLN)

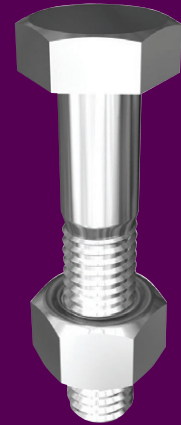
# Hex Bolt & Nut

Hot Dip Galvanise  
Zinc Plate



## HEX BOLT & NUT KIT CLASS 4.6 AS1111.1 / CLASS 5 AS1112.3 (7H)

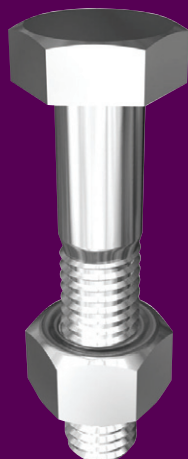
Part	Size	Length	Pack	Pack Wgt (Kg)	Stock	
					HDG	Z/P
KBH46?CM120025	M12	25	250	12.36	✓	✓
KBH46?CM120030	M12	30	250	13.18	✓	✓
KBH46?CM120035	M12	35	200	11.12	✓	✓
KBH46?CM120040	M12	40	200	12.05	✓	✓
KBH46?CM120045	M12	45	175	12.98	✓	✓
KBH46?CM120050	M12	50	175	11.78	✓	✓
KBH46?CM120055	M12	55	150	11.12	✓	✓
KBH46?CM120060	M12	60	150	12.26	✓	✓
KBH46?CM120065	M12	65	150	12.46	✓	✓
KBH46?CM120070	M12	70	150	13.08	✓	✓
KBH46?CM120075	M12	75	150	13.60	✓	✓
KBH46?CM120080	M12	80	100	9.48	✓	✓
KBH46?CM120090	M12	90	100	10.30	✓	✓
KBH46?CM120100	M12	100	100	11.12	✓	✓
KBH46?CM120110	M12	110	100	12.05	✓	✓
KBH46?CM120120	M12	120	100	13.39	✓	✓
KBH46?CM120130	M12	130	100	14.01	✓	✓
KBH46?CM120140	M12	140	100	14.63	✓	✓
KBH46?CM120150	M12	150	75	11.74	✓	✓
KBH46?CM120160	M12	160	75	12.88	✓	
KBH46?CM120170	M12	170	75	13.60	✓	
KBH46?CM120180	M12	180	50	9.58	✓	
KBH46?CM120200	M12	200	50	10.20	✓	
KBH46?CM120220	M12	220	50	11.33	✓	
KBH46?CM120240	M12	240	50	12.26	✓	
KBH46?CM120260	M12	260	50	13.18	✓	
KBH46?CM120280	M12	280	50	14.01	✓	
KBH46?CM120300	M12	300	50	14.94	✓	
KBH46?CM120325	M12	325	30	9.58	✓	
KBH46?CM120350	M12	350	30	10.40	✓	
KBH46?CM120400	M12	400	30	11.74	✓	



? = G: Hot Dip Galvanise (HDG)    Z: Zinc Plate (Z/P)    Y: Zinc Yellow Passivate (ZYP)    P: Plain (PLN)



LOW-TENSILE



# Hex Bolt & Nut

Hot Dip Galvanise  
Zinc Plate

## HEX BOLT & NUT KIT CLASS 4.6 AS1111.1 / CLASS 5 AS1112.3 (7H)

Part	Size	Length	Pack	Pack Wgt (Kg)	Stock	
					HDG	Z/P
KBH46?CM160025	M16	25	125	10.51	✓	✓
KBH46?CM160030	M16	30	100	11.12	✓	✓
KBH46?CM160035	M16	35	100	11.74	✓	✓
KBH46?CM160040	M16	40	100	12.46	✓	✓
KBH46?CM160045	M16	45	100	13.18	✓	✓
KBH46?CM160050	M16	50	100	13.80	✓	✓
KBH46?CM160055	M16	55	75	11.02	✓	✓
KBH46?CM160060	M16	60	75	11.64	✓	✓
KBH46?CM160065	M16	65	75	12.15	✓	✓
KBH46?CM160070	M16	70	75	12.57	✓	✓
KBH46?CM160075	M16	75	75	13.39	✓	✓
KBH46?CM160080	M16	80	75	14.01	✓	✓
KBH46?CM160085	M16	85	75	14.73	✓	
KBH46?CM160090	M16	90	75	15.04	✓	✓
KBH46?CM160100	M16	100	50	10.92	✓	✓
KBH46?CM160110	M16	110	50	11.54	✓	✓
KBH46?CM160120	M16	120	50	12.26	✓	✓
KBH46?CM160130	M16	130	50	12.98	✓	✓
KBH46?CM160140	M16	140	40	11.12	✓	✓
KBH46?CM160150	M16	150	40	11.74	✓	✓
KBH46?CM160160	M16	160	40	12.77	✓	
KBH46?CM160170	M16	170	40	13.49	✓	
KBH46?CM160180	M16	180	30	10.51	✓	
KBH46?CM160200	M16	200	25	9.58	✓	
KBH46?CM160220	M16	220	25	10.40	✓	
KBH46?CM160240	M16	240	25	11.12	✓	
KBH46?CM160260	M16	260	25	11.95	✓	
KBH46?CM160280	M16	280	25	12.77	✓	
KBH46?CM160300	M16	300	25	13.49	✓	
KBH46?CM160325	M16	325	20	11.85	✓	
KBH46?CM160350	M16	350	20	12.57	✓	
KBH46?CM160375	M16	375	20	13.39	✓	
KBH46?CM160400	M16	400	20	14.11	✓	
KBH46?CM160425	M16	425	20	14.94	✓	
KBH46?CM160450	M16	450	20	15.76	✓	
KBH46?CM160475	M16	475	20	16.10	✓	
KBH46?CM160500	M16	500	20	16.80	✓	
KBH46?CM160550	M16	550	15	14.21	✓	
KBH46?CM160600	M16	600	15	15.45	✓	

? = G: Hot Dip Galvanise (HDG)    Z: Zinc Plate (Z/P)    Y: Zinc Yellow Passivate (ZYP)    P: Plain (PLN)

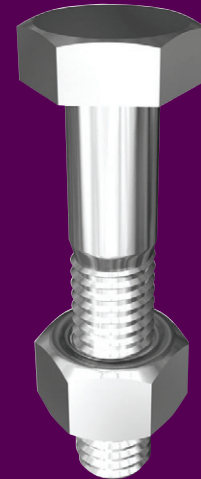
# Hex Bolt & Nut

Hot Dip Galvanise  
Zinc Plate



## HEX BOLT & NUT KIT CLASS 4.6 AS1111.1 / CLASS 5 AS1112.3 (7H)

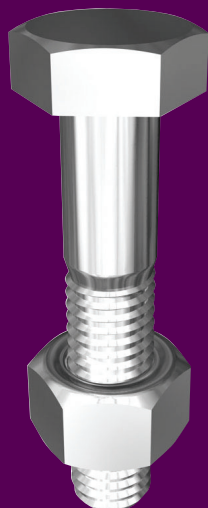
Part	Size	Length	Pack	Pack Wgt (Kg)	Stock	
					HDG	Z/P
KBH46?CM200040	M20	40	50	10.92	✓	✓
KBH46?CM200045	M20	45	50	11.43	✓	✓
KBH46?CM200050	M20	50	50	12.05	✓	✓
KBH46?CM200055	M20	55	50	12.57	✓	✓
KBH46?CM200060	M20	60	50	12.98	✓	✓
KBH46?CM200065	M20	65	50	13.91	✓	✓
KBH46?CM200070	M20	70	50	14.42	✓	✓
KBH46?CM200075	M20	75	50	15.14	✓	✓
KBH46?CM200080	M20	80	50	15.55	✓	✓
KBH46?CM200085	M20	85	30	9.79	✓	
KBH46?CM200090	M20	90	30	9.99	✓	✓
KBH46?CM200100	M20	100	30	10.82	✓	✓
KBH46?CM200110	M20	110	30	11.54	✓	✓
KBH46?CM200120	M20	120	30	12.36	✓	✓
KBH46?CM200130	M20	130	30	12.98	✓	✓
KBH46?CM200140	M20	140	25	11.33	✓	
KBH46?CM200150	M20	150	25	12.05	✓	✓
KBH46?CM200160	M20	160	25	13.18	✓	
KBH46?CM200170	M20	170	25	13.80	✓	
KBH46?CM200180	M20	180	25	14.63	✓	
KBH46?CM200200	M20	200	20	12.67	✓	
KBH46?CM200220	M20	220	20	13.39	✓	
KBH46?CM200240	M20	240	15	10.92	✓	
KBH46?CM200260	M20	260	15	11.64	✓	
KBH46?CM200280	M20	280	15	12.36	✓	
KBH46?CM200300	M20	300	15	13.18	✓	
KBH46?CM200325	M20	325	15	14.11	✓	
KBH46?CM200350	M20	350	15	14.94	✓	
KBH46?CM200375	M20	375	15	16.17	✓	
KBH46?CM200400	M20	400	15	16.89	✓	
KBH46?CM200425	M20	425	10	11.95	✓	
KBH46?CM200450	M20	450	10	12.57	✓	
KBH46?CM200500	M20	500	10	13.70	✓	
KBH46?CM200550	M20	550	10	14.94	✓	
KBH46?CM200600	M20	600	10	16.38	✓	
KBH46?CM200650	M20	650	8	12.90	✓	
KBH46?CM200700	M20	700	8	13.90	✓	
KBH46?CM200750	M20	750	8	14.80	✓	
KBH46?CM200800	M20	800	8	15.80	✓	



? = G: Hot Dip Galvanise (HDG)    Z: Zinc Plate (Z/P)    Y: Zinc Yellow Passivate (ZYP)    P: Plain (PLN)



LOW-TENSILE



# Hex Bolt & Nut

Hot Dip Galvanise

## HEX BOLT & NUT KIT CLASS 4.6 AS1111.1 / CLASS 5 AS1112.3 (7H)

Part	Size	Length	Pack	Pack Wgt (Kg)	Stock HDG
KBH46GCM240050	M24	50	25	10.20	✓
KBH46GCM240060	M24	60	25	11.02	✓
KBH46GCM240065	M24	65	25	11.43	✓
KBH46GCM240070	M24	70	25	11.74	✓
KBH46GCM240075	M24	75	25	12.26	✓
KBH46GCM240080	M24	80	25	12.77	✓
KBH46GCM240090	M24	90	25	13.59	✓
KBH46GCM240100	M24	100	20	11.54	✓
KBH46GCM240110	M24	110	20	12.26	✓
KBH46GCM240120	M24	120	20	13.08	✓
KBH46GCM240130	M24	130	20	13.70	✓
KBH46GCM240140	M24	140	20	14.52	✓
KBH46GCM240150	M24	150	15	11.33	✓
KBH46GCM240160	M24	160	15	12.05	✓
KBH46GCM240170	M24	170	15	12.36	✓
KBH46GCM240180	M24	180	15	13.08	✓
KBH46GCM240190	M24	190	15	13.49	✓
KBH46GCM240200	M24	200	15	14.21	✓
KBH46GCM240220	M24	220	15	15.04	✓
KBH46GCM240240	M24	240	10	10.92	✓
KBH46GCM240260	M24	260	10	11.54	✓
KBH46GCM240280	M24	280	10	12.05	✓
KBH46GCM240300	M24	300	10	13.08	✓
KBH46GCM240325	M24	325	10	13.80	✓
KBH46GCM240350	M24	350	10	14.73	✓
KBH46GCM240375	M24	375	10	15.66	✓
KBH46GCM240400	M24	400	10	16.58	✓
KBH46GCM240425	M24	425	10	17.51	✓
KBH46GCM240450	M24	450	5	9.27	✓
KBH46GCM240500	M24	500	5	10.30	✓
KBH46GCM240550	M24	550	5	11.02	✓
KBH46GCM240600	M24	600	5	12.05	✓
KBH46GCM240650	M24	650	4	9.70	✓
KBH46GCM240700	M24	700	4	10.04	✓
KBH46GCM240750	M24	750	4	11.10	✓
KBH46GCM240800	M24	800	4	11.80	✓

? = G: Hot Dip Galvanise (HDG)    Z: Zinc Plate (Z/P)    Y: Zinc Yellow Passivate (ZYP)    P: Plain (PLN)



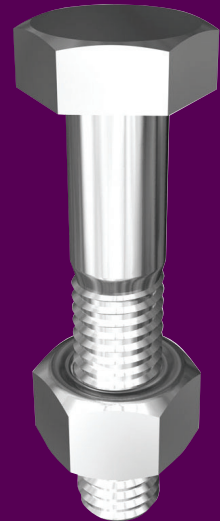
# Hex Bolt & Nut

Hot Dip Galvanise



## HEX BOLT & NUT KIT CLASS 4.6 AS1111.1 / CLASS 5 AS1112.3 (7H)

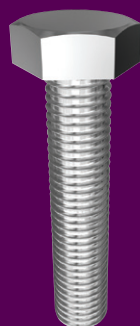
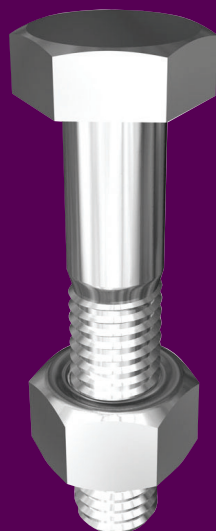
Part	Size	Length	Pack	Pack Wgt (Kg)	Stock HDG
KBH46GCM270100	M27	100	10	7.80	✓
KBH46GCM270110	M27	110	10	8.44	✓
KBH46GCM270120	M27	120	10	8.60	✓
KBH46GCM270130	M27	130	10	9.20	✓
KBH46GCM270140	M27	140	10	9.99	✓
KBH46GCM270150	M27	150	10	10.40	✓
KBH46GCM270170	M27	170	10	11.33	✓
KBH46GCM270200	M27	200	10	12.77	✓
KBH46GCM270250	M27	250	10	14.21	✓
KBH46GCM300075	M30	75	15	12.77	✓
KBH46GCM300090	M30	90	15	14.01	✓
KBH46GCM300100	M30	100	15	14.73	✓
KBH46GCM300110	M30	110	15	15.66	✓
KBH46GCM300120	M30	120	15	16.48	✓
KBH46GCM300130	M30	130	15	17.30	✓
KBH46GCM300140	M30	140	10	12.05	✓
KBH46GCM300150	M30	150	10	12.67	✓
KBH46GCM300180	M30	180	10	14.52	✓
KBH46GCM300200	M30	200	10	15.55	✓
KBH46GCM300220	M30	220	10	16.48	✓
KBH46GCM300240	M30	240	5	8.86	✓
KBH46GCM300260	M30	260	5	9.37	✓
KBH46GCM300280	M30	280	5	9.99	✓
KBH46GCM300300	M30	300	5	10.61	✓
KBH46GCM300350	M30	350	4	9.37	✓
KBH46GCM300400	M30	400	4	10.61	✓
KBH46GCM300450	M30	450	4	11.74	✓
KBH46GCM300500	M30	500	4	12.88	✓
KBH46GCM300550	M30	550	4	14.11	✓
KBH46GCM300600	M30	600	4	15.24	✓
KBH46GCM300700	M30	700	2	8.75	✓
KBH46GCM300800	M30	800	2	9.99	✓
KBH46GCM330100	M33	100	5	6.18	✓
KBH46GCM330130	M33	130	5	7.00	✓
KBH46GCM330140	M33	140	5	7.73	✓
KBH46GCM330150	M33	150	5	8.07	✓
KBH46GCM330160	M33	160	5	8.61	✓
KBH46GCM330170	M33	170	5	9.15	✓
KBH46GCM330180	M33	180	5	9.30	✓
KBH46GCM330200	M33	200	5	9.88	✓
KBH46GCM330210	M33	210	5	10.40	✓



? = G: Hot Dip Galvanise (HDG)    Z: Zinc Plate (Z/P)    Y: Zinc Yellow Passivate (ZYP)    P: Plain (PLN)



LOW-TENSILE



# Hex Bolt & Nut

Hot Dip Galvanise

## HEX BOLT & NUT KIT CLASS 4.6 AS1111.1 / CLASS 5 AS1112.3 (7H)

Part	Size	Length	Pack	Pack Wgt (Kg)	Stock HDG
KBH46GCM360100	M36	100	5	8.03	✓
KBH46GCM360130	M36	130	5	9.27	✓
KBH46GCM360150	M36	150	5	10.09	✓
KBH46GCM360170	M36	170	5	10.71	✓
KBH46GCM360200	M36	200	5	12.05	✓
KBH46GCM360220	M36	220	5	12.77	✓
KBH46GCM360300	M36	300	5	12.77	✓
KBH46GCM360400	M36	400	4	15.45	✓
KBH46GCM360500	M36	500	2	9.48	✓
KBH46GCM360600	M36	600	2	11.12	✓
KBH46GCM360700	M36	700	2	12.77	✓
KBH46GCM360800	M36	800	2	14.52	✓

## SET SCREW CLASS 4.6 AS1111.2

Part	Size	Length	Pack	Pack Wgt (Kg)	Stock Z/P
BS46ZCM060010	M6	10	200	1.00	✓
BS46ZCM060012	M6	12	200	1.10	✓
BS46ZCM060016	M6	16	200	1.18	✓
BS46ZCM060020	M6	20	200	1.28	✓
BS46ZCM060025	M6	25	200	1.50	✓
BS46ZCM060030	M6	30	200	1.63	✓
BS46ZCM060035	M6	35	200	1.90	✓
BS46ZCM060040	M6	40	200	2.20	✓
BS46ZCM060045	M6	45	200	2.40	✓
BS46ZCM060050	M6	50	200	2.50	✓
BS46ZCM060065	M6	65	150	2.11	✓
BS46ZCM060075	M6	75	150	2.42	✓
BS46ZCM080012	M8	12	200	1.90	✓
BS46ZCM080016	M8	16	200	2.10	✓
BS46ZCM080020	M8	20	200	2.30	✓
BS46ZCM080025	M8	25	200	2.60	✓
BS46ZCM080030	M8	30	200	3.00	✓
BS46ZCM080035	M8	35	200	3.30	✓
BS46ZCM080040	M8	40	200	3.60	✓
BS46ZCM080045	M8	45	200	3.90	✓
BS46ZCM080050	M8	50	200	4.20	✓
BS46ZCM080065	M8	65	150	3.50	✓
BS46ZCM080075	M8	75	150	3.90	✓

? = G: Hot Dip Galvanise (HDG)    Z: Zinc Plate (Z/P)    Y: Zinc Yellow Passivate (ZYP)    P: Plain (PLN)

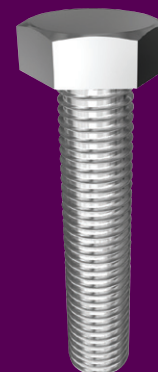
# Set Screws

Hot Dip Galvanise  
Zinc Plate



## SET SCREW CLASS 4.6 AS1111.2

Part	Size	Length	Pack	Pack Wgt (Kg)	Stock	
					HDG	Z/P
BS46ZCM100012	M10	12	150	2.10		✓
BS46ZCM100016	M10	16	150	2.50		✓
BS46ZCM100020	M10	20	150	2.90		✓
BS46ZCM100025	M10	25	150	3.40		✓
BS46ZCM100030	M10	30	150	3.70		✓
BS46ZCM100035	M10	35	150	4.10		✓
BS46?CM100040	M10	40	150	4.50	✓	✓
BS46ZCM100045	M10	45	75	2.20		✓
BS46?CM100050	M10	50	75	2.60	✓	✓
BS46ZCM100065	M10	65	75	3.20		✓
BS46?CM100075	M10	75	75	3.50	✓	✓
BS46ZCM100090	M10	90	50	2.80		✓
BS46?CM100100	M10	100	50	2.90	✓	✓
BS46ZCM120020	M12	20	100	2.90		✓
BS46ZCM120025	M12	25	100	3.40		✓
BS46ZCM120030	M12	30	100	3.70		✓
BS46ZCM120035	M12	35	100	4.00		✓
BS46ZCM120040	M12	40	100	4.50		✓
BS46?CM120050	M12	50	75	3.90	✓	✓
BS46ZCM120060	M12	60	75	4.40		✓
BS46ZCM120065	M12	65	75	4.70		✓
BS46?CM120075	M12	75	75	5.10	✓	✓
BS46ZCM120090	M12	90	50	4.10		✓
BS46?CM120100	M12	100	50	4.50	✓	✓
BS46ZCM160030	M16	30	50	3.30		✓
BS46?CM160040	M16	40	50	4.40	✓	✓
BS46?CM160050	M16	50	50	5.10	✓	✓
BS46?CM160060	M16	60	50	5.60	✓	✓
BS46?CM160075	M16	75	25	3.30	✓	✓
BS46?CM160090	M16	90	25	3.90	✓	✓
BS46?CM160100	M16	100	25	4.20	✓	✓
BS46?CM200040	M20	40	25	3.80	✓	✓
BS46?CM200050	M20	50	25	4.30	✓	✓
BS46?CM200060	M20	60	20	3.80	✓	✓
BS46?CM200075	M20	75	20	4.50	✓	✓
BS46?CM200100	M20	100	20	5.40	✓	✓
BS46?CM200130	M20	130	10	3.50	✓	✓
BS46?CM200150	M20	150	10	4.10	✓	✓



? = G: Hot Dip Galvanise (HDG)    Z: Zinc Plate (Z/P)    Y: Zinc Yellow Passivate (ZYP)    P: Plain (PLN)



LOW-TENSILE

# Cup Head Bolt & Nut

Hot Dip Galvanise  
Zinc Plate



## CUP HEAD BOLT & NUT CLASS 4.6 AS1390 / CLASS 5 AS1112.3 (7H)

Part	Size	Length	Thread	Pack	Pack Wgt (Kg)	Stock	
						HDG	Z/P
KBC46?CM060020	M6	20	20	200	1.65	✓	✓
KBC46?CM060025	M6	25	25	200	1.75	✓	✓
KBC46?CM060030	M6	30	30	200	1.96	✓	✓
KBC46?CM060040	M6	40	30	200	2.37	✓	✓
KBC46?CM060045	M6	45	30	200	2.58	✓	
KBC46?CM060050	M6	50	40	200	2.68	✓	✓
KBC46?CM060060	M6	60	40	150	2.37	✓	
KBC46?CM060065	M6	65	50	150	2.47	✓	✓
KBC46?CM060075	M6	75	60	150	2.88	✓	✓
KBC46?CM060080	M6	80	60	150	3.10		✓
KBC46?CM060090	M6	90	60	150	3.40	✓	✓
KBC46?CM060100	M6	100	60	150	3.71	✓	✓
KBC46?CM060130	M6	130	80	100	3.30	✓	
KBC46?CM060150	M6	150	80	100	3.61	✓	



## CUP HEAD BOLT & NUT CLASS 4.6 AS1390 / CLASS 5 AS1112.3 (7H)

Part	Size	Length	Thread	Pack	Pack Wgt (Kg)	Stock	
						HDG	Z/P
KBC46?CM080020	M8	20	20	200	3.50	✓	✓
KBC46?CM080025	M8	25	25	200	3.61	✓	✓
KBC46?CM080030	M8	30	30	200	4.12	✓	✓
KBC46?CM080040	M8	40	30	200	4.74	✓	✓
KBC46?CM080050	M8	50	40	150	4.12	✓	✓
KBC46?CM080060	M8	60	40	150	4.53	✓	
KBC46?CM080065	M8	65	50	150	4.12	✓	✓
KBC46?CM080075	M8	75	60	100	4.84	✓	✓
KBC46?CM080090	M8	90	60	100	3.91	✓	✓
KBC46?CM080100	M8	100	60	100	4.33	✓	✓
KBC46?CM080120	M8	120	80	100	5.36	✓	
KBC46?CM080130	M8	130	80	100	5.77	✓	
KBC46?CM080150	M8	150	80	100	6.70	✓	
KBC46?CM080180	M8	180	100	50	4.02	✓	

? = G: Hot Dip Galvanise (HDG)    Z: Zinc Plate (Z/P)    Y: Zinc Yellow Passivate (ZYP)    P: Plain (PLN)

# Cup Head Bolt & Nut

Hot Dip Galvanise  
Zinc Plate



## CUP HEAD BOLT & NUT CLASS 4.6 AS1390 / CLASS 5 AS1112.3 (7H)

Part	Size	Length	Thread	Pack	Pack Wgt (Kg)	Stock	
						HDG	Z/P
KBC46?CM100020	M10	20	20	200	6.00		✓
KBC46?CM100025	M10	25	25	200	6.70	✓	✓
KBC46?CM100030	M10	30	30	200	7.31	✓	✓
KBC46?CM100040	M10	40	40	150	6.18	✓	✓
KBC46?CM100050	M10	50	40	100	4.64	✓	✓
KBC46?CM100060	M10	60	40	100	5.15	✓	✓
KBC46?CM100065	M10	65	50	100	5.36	✓	✓
KBC46?CM100070	M10	70	50	100	5.67	✓	✓
KBC46?CM100075	M10	75	60	100	5.87	✓	✓
KBC46?CM100090	M10	90	60	50	3.30	✓	✓
KBC46?CM100100	M10	100	60	50	3.61	✓	✓
KBC46?CM100110	M10	110	80	50	3.81	✓	✓
KBC46?CM100120	M10	120	80	50	4.12	✓	✓
KBC46?CM100130	M10	130	80	50	4.33	✓	✓
KBC46?CM100140	M10	140	80	50	4.64	✓	✓
KBC46?CM100150	M10	150	80	50	4.84	✓	✓
KBC46?CM100160	M10	160	100	100	10.20	✓	
KBC46?CM100170	M10	170	100	100	10.71	✓	
KBC46?CM100180	M10	180	100	100	11.23	✓	
KBC46?CM100190	M10	190	100	100	11.74	✓	
KBC46?CM100200	M10	200	100	100	12.26	✓	
KBC46?CM100220	M10	220	130	100	13.29	✓	
KBC46?CM100240	M10	240	130	75	10.40	✓	
KBC46?CM100260	M10	260	130	75	11.12	✓	
KBC46?CM100280	M10	280	130	75	11.95	✓	
KBC46?CM100300	M10	300	150	75	12.67	✓	



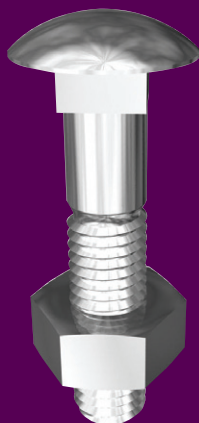
? = G: Hot Dip Galvanise (HDG)    Z: Zinc Plate (Z/P)    Y: Zinc Yellow Passivate (ZYP)    P: Plain (PLN)



LOW-TENSILE

# Cup Head Bolt & Nut

Hot Dip Galvanise  
Zinc Plate



## CUP HEAD BOLT & NUT CLASS 4.6 AS1390 / CLASS 5 AS1112.3 (7H)

Part	Size	Length	Thread	Pack	Pack Wgt (Kg)	Stock	
						HDG	Z/P
KBC46?CM120030	M12	30	30	200	11.74	✓	
KBC46?CM120040	M12	40	40	200	13.18	✓	✓
KBC46?CM120045	M12	45	45	150	9.45	✓	
KBC46?CM120050	M12	50	40	150	11.02	✓	✓
KBC46?CM120065	M12	65	50	150	12.67	✓	✓
KBC46?CM120070	M12	70	50	150	13.18	✓	✓
KBC46?CM120075	M12	75	60	150	13.60	✓	✓
KBC46?CM120085	M12	85	60	100	9.50		✓
KBC46?CM120090	M12	90	60	100	10.20	✓	✓
KBC46?CM120100	M12	100	60	100	10.92	✓	✓
KBC46?CM120110	M12	110	80	100	11.64	✓	
KBC46?CM120120	M12	120	80	100	12.46	✓	✓
KBC46?CM120130	M12	130	80	75	9.79	✓	✓
KBC46?CM120140	M12	140	80	75	10.40	✓	
KBC46?CM120150	M12	150	80	75	10.92	✓	✓
KBC46?CM120160	M12	160	100	75	11.23	✓	
KBC46?CM120170	M12	170	100	75	11.64	✓	
KBC46?CM120180	M12	180	100	75	11.95	✓	✓
KBC46?CM120190	M12	190	100	75	12.57	✓	
KBC46?CM120200	M12	200	100	75	13.18	✓	✓
KBC46?CM120220	M12	220	130	50	9.58	✓	
KBC46?CM120240	M12	240	130	50	10.30	✓	
KBC46?CM120260	M12	260	130	50	10.82	✓	
KBC46?CM120280	M12	280	130	50	11.64	✓	
KBC46?CM120300	M12	300	150	50	12.36	✓	
KBC46?CM120325	M12	325	150	50	13.39	✓	
KBC46?CM120350	M12	350	150	30	14.21	✓	
KBC46?CM120375	M12	375	150	30	15.24	✓	
KBC46?CM120400	M12	400	150	30	16.27	✓	

? = G: Hot Dip Galvanise (HDG)    Z: Zinc Plate (Z/P)    Y: Zinc Yellow Passivate (ZYP)    P: Plain (PLN)

# Cup Head Bolt & Nut

Hot Dip Galvanise



## CUP HEAD BOLT & NUT CLASS 4.6 AS1390 / CLASS 5 AS1112.3 (7H)

Part	Size	Length	Thread	Pack	Pack Wgt (Kg)	Stock HDG
KBC46GCM160050	M16	50	50	100	15.14	✓
KBC46GCM160065	M16	65	65	75	12.67	✓
KBC46GCM160075	M16	75	60	75	13.80	✓
KBC46GCM160100	M16	100	60	50	10.82	✓
KBC46GCM160120	M16	120	80	50	12.15	✓
KBC46GCM160130	M16	130	80	50	12.77	✓
KBC46GCM160140	M16	140	80	50	13.49	✓
KBC46GCM160150	M16	150	80	50	14.21	✓
KBC46GCM160170	M16	170	100	30	9.37	✓
KBC46GCM160180	M16	180	100	30	9.58	✓
KBC46GCM160200	M16	200	100	30	10.51	✓
KBC46GCM160220	M16	220	130	30	11.33	✓
KBC46GCM160240	M16	240	130	30	12.05	✓
KBC46GCM160260	M16	260	130	25	10.92	✓
KBC46GCM160280	M16	280	130	25	12.46	✓
KBC46GCM160300	M16	300	150	25	11.85	✓
KBC46GCM160350	M16	350	150	25	13.39	✓
KBC46GCM160400	M16	400	150	25	15.35	✓
KBC46GCM200065	M20	65	65	50	15.35	✓
KBC46GCM200075	M20	75	60	50	16.27	✓
KBC46GCM200090	M20	90	60	30	10.82	✓
KBC46GCM200100	M20	100	60	30	11.33	✓
KBC46GCM200120	M20	120	80	30	12.77	✓
KBC46GCM200130	M20	130	80	30	13.18	✓
KBC46GCM200140	M20	140	80	30	13.91	✓
KBC46GCM200150	M20	150	80	30	14.42	✓
KBC46GCM200180	M20	180	100	30	15.76	✓
KBC46GCM200200	M20	200	100	30	16.38	✓
KBC46GCM200220	M20	220	130	25	14.94	✓
KBC46GCM200240	M20	240	130	25	16.27	✓
KBC46GCM200260	M20	260	130	20	13.80	✓
KBC46GCM200280	M20	280	130	20	14.63	✓
KBC46GCM200300	M20	300	150	20	15.45	✓
KBC46GCM200350	M20	350	150	10	8.86	✓
KBC46GCM200400	M20	400	150	10	9.79	✓
KBC46GCM200500	M20	500	150	10	11.74	✓
KBC46GCM200550	M20	550	150	10	12.46	✓



? = G: Hot Dip Galvanise (HDG)    Z: Zinc Plate (Z/P)    Y: Zinc Yellow Passivate (ZYP)    P: Plain (PLN)



LOW-TENSILE

# XL Hex Bolt & Nut

Xtra Long Thread + Nut Assembled  
Hot Dip Galvanise



## XL HEX BOLT & NUT CLASS 4.6 AS1111.1 / CLASS 5 AS1112.3 (7H)

Part	Size	Length	Thread	Pack (Poly Bag)	Pack Wgt (kg)	Stock HDG
KBX46GCM120040	M12	40	30	200	11.70	✓
KBX46GCM120050	M12	50	30	175	11.70	✓
KBX46GCM120100	M12	100	70	100	10.90	✓
KBX46GCM120130	M12	130	80	100	13.80	✓
KBX46GCM120150	M12	150	80	75	11.60	✓
KBX46GCM120180	M12	180	100	50	9.30	✓
KBX46GCM120200	M12	200	100	50	10.20	✓
KBX46GCM120220	M12	220	100	50	11.00	✓
KBX46GCM120300	M12	300	100	50	14.60	✓
KBX46GCM120350	M12	350	150	30	10.40	✓
KBX46GCM120400	M12	400	150	30	11.74	✓
KBX46GCM120450	M12	450	150	25	10.40	✓
KBX46GCM160130	M16	130	80	50	12.98	✓
KBX46GCM160150	M16	150	80	40	11.74	✓
KBX46GCM160180	M16	180	100	30	10.51	✓
KBX46GCM160200	M16	200	100	25	9.58	✓
KBX46GCM160220	M16	220	100	25	10.40	✓
KBX46GCM160240	M16	240	100	25	11.12	✓
KBX46GCM160260	M16	260	100	25	11.95	✓
KBX46GCM160300	M16	300	100	25	13.49	✓
KBX46GCM160350	M16	350	150	25	12.57	✓
KBX46GCM160400	M16	400	150	20	14.11	✓
KBX46GCM160450	M16	450	150	20	15.76	✓
KBX46GCM160500	M16	500	150	20	16.80	✓
KBX46GCM160600	M16	600	150	15	15.45	✓
KBX46GCM200050	M20	50	50	50	12.05	✓
KBX46GCM200065	M20	65	50	50	13.91	✓
KBX46GCM200100	M20	100	70	30	10.82	✓
KBX46GCM200130	M20	130	80	30	12.98	✓
KBX46GCM200150	M20	150	80	25	12.05	✓
KBX46GCM200180	M20	180	100	25	14.63	✓
KBX46GCM200200	M20	200	100	20	12.67	✓
KBX46GCM200220	M20	220	100	20	13.39	✓
KBX46GCM200260	M20	260	100	15	10.92	✓
KBX46GCM200300	M20	300	100	15	13.18	✓
KBX46GCM200350	M20	350	150	15	14.94	✓
KBX46GCM200400	M20	400	150	15	16.89	✓
KBX46GCM200450	M20	450	150	10	12.57	✓
KBX46GCM200500	M20	500	150	10	13.70	✓
KBX46GCM200550	M20	550	150	10	14.94	✓
KBX46GCM200600	M20	600	150	10	16.38	✓

? = G: Hot Dip Galvanise (HDG)    Z: Zinc Plate (Z/P)    Y: Zinc Yellow Passivate (ZYP)    P: Plain (PLN)



# Coach Screws

Hot Dip Galvanise  
Zinc Plate



## COACH SCREW METRIC CLASS 4.6 AS1393

Part	Size	Length	Thread	Pack	Pack Wgt (Kg)	Stock	
						HDG	Z/P
BH46?LM060025	M6	25	15	100	0.62	✓	✓
BH46?LM060040	M6	40	24	100	0.72	✓	✓
BH46?LM060050	M6	50	30	100	0.82	✓	✓
BH46?LM060065	M6	65	39	100	1.03	✓	✓
BH46?LM060075	M6	75	45	100	1.24	✓	✓
BH46?LM060100	M6	100	60	100	1.44	✓	
BH46?LM080030	M8	30	18	100	1.30		✓
BH46?LM080040	M8	40	24	100	1.65	✓	✓
BH46?LM080050	M8	50	30	100	1.85	✓	✓
BH46?LM080065	M8	65	39	100	2.27	✓	✓
BH46?LM080075	M8	75	45	100	2.58	✓	✓
BH46?LM080100	M8	100	60	100	3.30	✓	✓
BH46?LM100040	M10	40	24	100	2.88	✓	✓
BH46?LM100050	M10	50	30	100	3.30	✓	✓
BH46?LM100065	M10	65	39	100	4.02	✓	✓
BH46?LM100075	M10	75	45	100	4.43	✓	✓
BH46?LM100090	M10	90	54	100	5.15	✓	✓
BH46?LM100100	M10	100	60	50	2.78	✓	✓
BH46?LM100120	M10	120	72	50	3.19	✓	✓
BH46?LM100130	M10	130	78	50	3.40	✓	✓
BH46?LM100150	M10	150	90	50	3.81	✓	✓
BH46?LM120040	M12	40	24	25	0.98	✓	
BH46?LM120050	M12	50	30	25	1.16	✓	✓
BH46?LM120065	M12	65	39	25	1.42	✓	✓
BH46?LM120075	M12	75	45	25	1.57	✓	✓
BH46?LM120090	M12	90	54	25	1.83	✓	
BH46?LM120100	M12	100	60	25	1.98	✓	✓
BH46?LM120120	M12	120	72	25	2.24	✓	
BH46?LM120130	M12	130	78	25	2.63	✓	✓
BH46?LM120150	M12	150	90	25	2.78	✓	✓
BH46?LM120180	M12	180	108	25	3.09	✓	
BH46?LM120200	M12	200	120	25	3.61	✓	
BH46?LM160075	M16	75	45	25	3.32	✓	
BH46?LM160100	M16	100	60	25	3.86	✓	
BH46?LM160130	M16	130	78	25	4.07	✓	
BH46?LM160150	M16	150	90	25	4.56	✓	
BH46?LM160200	M16	200	120	25	5.72	✓	
BH46?LM200100	M20	100	60	25	9.12	✓	



? = G: Hot Dip Galvanise (HDG)    Z: Zinc Plate (Z/P)    Y: Zinc Yellow Passivate (ZYP)    P: Plain (PLN)



LOW-TENSILE

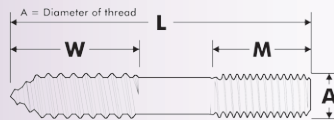
# Lag / Eye & Hook Screws

Zinc Plate



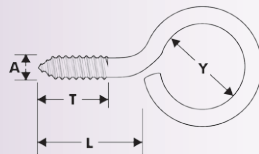
## BSW LAG SCREWS MILD STEEL

Part	A	L	M	W	Pack	Pack Wgt (Kg)	Stock Z/P
LSMSZW0250200	1/4"	2"	3/4"	1 1/4"	100	0.88	✓
LSMSZW0250250	1/4"	2 1/2"	1 1/4"	1 1/4"	100	1.10	✓
LSMSZW0250300	1/4"	3"	1 1/4"	1 1/4"	100	1.29	✓
LSMSZW0310175	5/16"	1 3/4"	3/8"	1 1/8"	100	1.11	✓
LSMSZW0310200	5/16"	2"	7/8"	1 1/8"	100	1.53	✓
LSMSZW0310250	5/16"	2 1/2"	1"	1 1/2"	100	1.91	✓
LSMSZW0310275	5/16"	2 3/4"	1 1/4"	1 1/2"	100	2.05	✓
LSMSZW0310300	5/16"	3"	1 1/2"	1 1/2"	100	2.23	✓
LSMSZW0310350	5/16"	3 1/2"	1 1/4"	1 1/2"	100	2.64	✓
LSMSZW0500600	1/2"	6"	1 1/4"	4 1/8"	100	11.75	✓



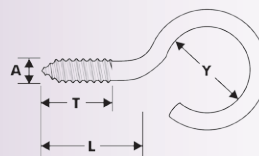
## HEAVY SCREW EYE MILD STEEL

Part	A	L	Y	T	Pack	Pack Wgt (Kg)	Stock Z/P
SEMSZL0250175	1/4"	1 3/4"	3/4"	1 1/4"	100	2.00	✓
SEMSZL0310200	5/16"	2"	3/4"	1 1/2"	100	4.00	✓
SEMSZL0310550	5/16"	5 1/2"	3/4"	3"	100	7.00	✓
SEMSZL0370250	3/8"	2 1/2"	1"	1 1/2"	100	7.40	✓



## HEAVY SCREW HOOK MILD STEEL

Part	A	L	Y	T	Pack	Pack Wgt (Kg)	Stock Z/P
SHMSZL0250175	1/4"	1 3/4"	3/4"	1 1/4"	100	2.00	✓
SHMSZL0310200	5/16"	2"	3/4"	1 1/2"	100	4.00	✓
SHMSZL0370250	3/8"	2 1/2"	1"	1 1/2"	100	7.00	✓



? = G: Hot Dip Galvanise (HDG)    Z: Zinc Plate (Z/P)    Y: Zinc Yellow Passivate (ZYP)    P: Plain (PLN)

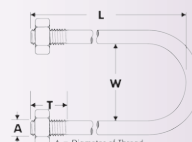
# U Bolt

Hot Dip Galvanise  
Zinc Plate



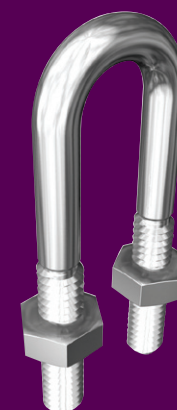
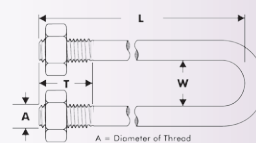
## 1/4"BSW ROUND U BOLT KIT MILD STEEL (incl. 2 Nuts)

Part	A	Nominal Bore	W	L	T	Pack	Pack Wgt (Kg)	Stock	
Z/P									
KURMSZW0250050	1/4"	1/2"	15	7/8"	2 3/8"	1 1/2"	100	2.92	✓
KURMSZW0250075	1/4"	3/4"	20	1 1/16"	2 1/16"	1 1/2"	100	3.22	✓
KURMSZW0250100	1/4"	1"	25	1 3/8"	2 7/8"	1 1/2"	100	3.46	✓
KURMSZW0250125	1/4"	1 1/4"	32	1 1/16"	3 3/16"	1 1/2"	100	3.87	✓
KURMSZW0250150	1/4"	1 1/2"	40	1 15/16"	3 7/16"	1 1/2"	100	4.14	✓
KURMSZW0250200	1/4"	2"	50	2 3/8"	3 7/8"	1 1/2"	100	4.61	✓



## BSW ROUND U BOLT KIT MILD STEEL (incl. 2 Nuts)

Part	A	Nominal Bore	W	L	T	Pack	Pack Wgt (Kg)	Stock	
HDG Z/P									
KURMS?W0370050	3/8"	1/2"	13	7/8"	2 5/8"	1 3/4"	50	4.61	✓
KURMS?W0370075	3/8"	3/4"	19	1 1/16"	3 1/16"	2"	50	5.19	✓
KURMS?W0370100	3/8"	1"	25	1 3/8"	3 3/8"	2"	50	5.58	✓
KURMS?W0370125	3/8"	1 1/4"	32	1 1/16"	3 1/16"	2"	50	6.02	✓
KURMS?W0370150	3/8"	1 1/2"	38	1 15/16"	3 15/16"	2"	50	6.34	✓
KURMS?W0370200	3/8"	2"	51	2 3/8"	4 3/8"	2"	50	7.02	✓
KURMS?W0500250	1/2"	2 1/2"	64	3"	5"	2"	25	6.80	✓
KURMS?W0500300	1/2"	3"	76	3 1/2"	5 1/2"	2"	25	7.63	✓
KURMS?W0500350	1/2"	3 1/2"	89	4"	6"	2"	25	8.23	✓
KURMS?W0500400	1/2"	4"	101	4 1/2"	6 1/2"	2"	10	3.55	✓
KURMS?W0500500	1/2"	5"	127	5 1/16"	7 7/16"	2"	10	4.08	✓
KURMS?W0500600	1/2"	6"	150	6 5/8"	8 5/8"	2"	10	4.61	✓
KURMS?W0620800	5/8"	8"	200	8 5/8"	11 5/8"	2"	10	9.78	✓
KURMS?W0751000	3/4"	10"	250	10 3/4"	14 3/4"	2"	5	9.15	✓
KURMS?W0751200	3/4"	12"	300	12 3/4"	16 3/4"	2"	1	2.06	✓



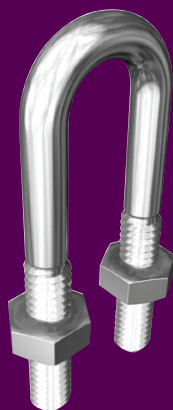
? = G: Hot Dip Galvanise (HDG)    Z: Zinc Plate (Z/P)    Y: Zinc Yellow Passivate (ZYP)    P: Plain (PLN)



LOW-TENSILE

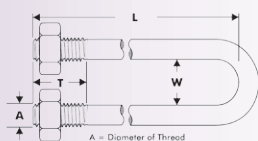
# U Bolt

Hot Dip Galvanise  
Zinc Plate



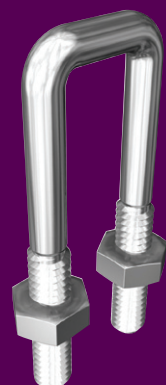
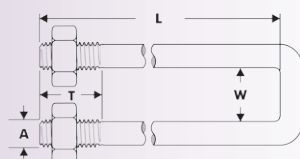
## METRIC ROUND U BOLT KIT MILD STEEL (incl. 2 Nuts)

Part	A	Nominal Bore	W	L	T	Pack	Pack Wgt (Kg)	Stock HDG
KURMSGCM100021	M10	15	21	65	40	50	4.83	✓
KURMSGCM100027	M10	20	27	77	50	50	5.56	✓
KURMSGCM100034	M10	25	34	85	50	50	6.04	✓
KURMSGCM100043	M10	32	43	93	50	50	6.55	✓
KURMSGCM100048	M10	40	48	100	50	50	7.09	✓
KURMSGCM100051	M10	40	51	103	50	50	7.16	✓
KURMSGCM100060	M10	50	60	110	50	50	7.60	✓
KURMSGCM120076	M12	65	76	127	50	25	6.38	✓
KURMSGCM120089	M12	80	89	140	50	25	6.93	✓
KURMSGCM120102	M12	90	102	152	50	25	7.47	✓
KURMSGCM120114	M12	100	114	165	50	10	3.22	✓
KURMSGCM120140	M12	125	140	190	50	10	3.68	✓
KURMSGCM120165	M12	150	165	215	50	10	4.13	✓
KURMSGCM120168	M12	150	168	220	50	10	4.20	✓
KURMSGCM160219	M16	200	219	295	75	10	10.24	✓
KURMSGCM200273	M20	250	273	370	100	5	10.06	✓
KURMSGCM200324	M20	300	324	420	100	1	2.26	✓
KURMSGCM200356	M20	350	356	455	100	1	2.47	✓
KURMSGCM200406	M20	400	406	505	100	1	2.72	✓
KURMSGCM240457	M24	450	457	555	100	1	4.35	✓
KURMSGCM240508	M24	500	508	605	100	1	4.80	✓
KURMSGCM240610	M24	600	610	710	100	1	5.54	✓



## METRIC SQUARE U BOLT KIT MILD STEEL (incl. 2 Nuts)

Part	A	W	L	T	Pack	Pack Wgt (Kg)	Stock HDG	Z/P
KUSMS?CM10042086	M10	42	86	55	50	6.58	✓	✓
KUSMS?CM10042127	M10	42	127	55	50	8.57		✓



? = G: Hot Dip Galvanise (HDG)    Z: Zinc Plate (Z/P)    Y: Zinc Yellow Passivate (ZYP)    P: Plain (PLN)

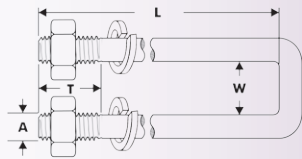
# U / Eye Bolt

Hot Dip Galvanise



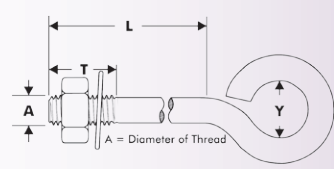
## METRIC SQUARE U BOLT KIT MILD STEEL (incl. 2 Nuts & 2 Spring Washers)

Part	A	W	L	T	Pack	Pack Wgt (Kg)	Stock HDG
KUSMSGSM10024060	M10	24	60	40	50	3.93	✓
KUSMSGSM12042115	M12	42	115	50	25	5.64	✓
KUSMSGSM12044110	M12	44	110	50	25	5.50	✓
KUSMSGSM12052080	M12	52	80	50	25	4.59	✓
KUSMSGSM12052110	M12	52	110	50	25	5.64	✓
KUSMSGSM12052145	M12	52	145	50	25	6.87	✓
KUSMSGSM12052165	M12	52	165	50	25	7.58	✓
KUSMSGSM12067090	M12	67	90	50	25	5.20	✓
KUSMSGSM12077080	M12	77	80	50	25	5.03	✓
KUSMSGSM12077110	M12	77	110	50	25	6.08	✓
KUSMSGSM12127160	M12	127	160	50	10	3.49	✓



## BSW EYE BOLT KIT MILD STEEL (incl. 1 Nut & 1 Washer)

Part	A	L	Y	T	Pack	Pack Wgt (Kg)	Stock HDG
KENMSGW0370200	3/8"	2"	3/4"	1 1/2"	50	3.57	✓
KENMSGW0370300	3/8"	3"	3/4"	1 1/2"	50	4.12	✓
KENMSGW0370350	3/8"	3 1/2"	3/4"	1 1/2"	50	4.40	✓
KENMSGW0370400	3/8"	4"	3/4"	1 1/2"	50	4.66	✓
KENMSGW0370600	3/8"	6"	3/4"	1 1/2"	50	5.77	✓
KENMSGW0370800	3/8"	8"	3/4"	2 1/4"	25	3.43	✓
KENMSGW0371200	3/8"	12"	3/4"	3"	25	4.54	✓
KENMSGW0500300	1/2"	3"	3/4"	2 1/2"	25	3.26	✓
KENMSGW0500400	1/2"	4"	3/4"	2 1/2"	25	3.75	✓
KENMSGW0500500	1/2"	5"	3/4"	2 1/2"	25	4.38	✓
KENMSGW0500600	1/2"	6"	3/4"	2 1/2"	25	4.73	✓
KENMSGW0500800	1/2"	8"	3/4"	2 1/2"	25	5.37	✓
KENMSGW0500900	1/2"	9"	3/4"	2 1/2"	25	6.20	✓
KENMSGW0620400	5/8"	4"	1"	2 1/2"	25	6.82	✓



? = G: Hot Dip Galvanise (HDG)    Z: Zinc Plate (Z/P)    Y: Zinc Yellow Passivate (ZYP)    P: Plain (PLN)



LOW-TENSILE

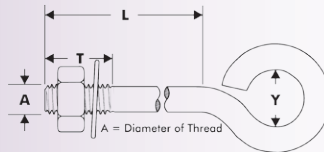
# Eye Bolt

Zinc Plate



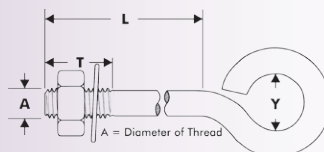
## BSW EYE BOLT MILD STEEL (incl. 1 Nut & 1 Washer)

Part	A	L	Y	T	Pack	Pack Wgt (Kg)	Stock Z/P
KENMSZW0250200	1/4"	2"	3/8"	1 1/2"	100	1.97	✓
KENMSZW0250250	1/4"	2 1/2"	3/8"	1 1/2"	100	2.17	✓
KENMSZW0250300	1/4"	3"	3/8"	1 1/2"	100	2.39	✓
KENMSZW0250400	1/4"	4"	3/8"	1 1/2"	100	2.82	✓
KENMSZW0250450	1/4"	4 1/2"	3/8"	1 1/2"	100	3.04	✓
KENMSZW0310200	5/16"	2"	1/2"	1 1/2"	100	3.25	✓
KENMSZW0310250	5/16"	2 1/2"	1/2"	1 1/2"	100	3.69	✓
KENMSZW0310300	5/16"	3"	1/2"	1 1/2"	100	3.98	✓
KENMSZW0310350	5/16"	3 1/2"	1/2"	1 1/2"	100	4.32	✓
KENMSZW0310400	5/16"	4"	1/2"	1 1/2"	100	4.59	✓
KENMSZW0310450	5/16"	4 1/2"	1/2"	1 1/2"	100	4.89	✓
KENMSZW0310500	5/16"	5"	1/2"	1 1/2"	100	5.23	✓
KENMSZW0310600	5/16"	6"	1/2"	1 1/2"	100	5.84	✓



## BSW LARGE EYE BOLT KIT MILD STEEL (incl. 1 Nut & 1 Washer)

Part	A	L	Y	T	Pack	Pack Wgt (Kg)	Stock Z/P
KELMSZW0250200	1/4"	2"	3/4"	1 3/4"	100	2.51	✓
KELMSZW0250300	1/4"	3"	3/4"	2 1/4"	100	2.94	✓
KELMSZW0310200	5/16"	2"	3/4"	1 3/4"	50	1.92	✓
KELMSZW0310300	5/16"	3"	3/4"	2 3/4"	50	2.21	✓
KELMSZW0310400	5/16"	4"	3/4"	3 3/8"	50	2.50	✓
KELMSZW0370300	3/8"	3"	1"	2 3/4"	50	4.57	✓
KELMSZW0370400	3/8"	4"	1"	3 3/8"	25	2.56	✓
KELMSZW0370600	3/8"	6"	1"	3 3/8"	25	3.11	✓



? = G: Hot Dip Galvanise (HDG)    Z: Zinc Plate (Z/P)    Y: Zinc Yellow Passivate (ZYP)    P: Plain (PLN)

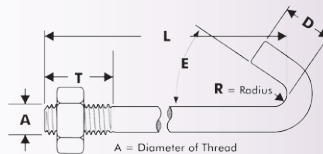
# Hook / J Bolt

Zinc Plate



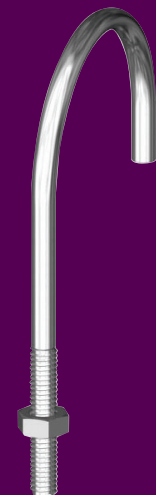
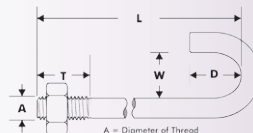
## 1/4"BSW HOOK BOLT KIT MILD STEEL (incl. 1 Nut)

Part	A	L	T	E	D	Pack	Pack Wgt (Kg)	Stock Z/P
KHBMSZW0250100	1/4"	1"	1/2"	45°	3/4"	100	1.12	✓
KHBMSZW0250150	1/4"	1 1/2"	1"	45°	3/4"	100	1.29	✓
KHBMSZW0250200	1/4"	2"	1 1/2"	45°	3/4"	100	1.56	✓
KHBMSZW0250250	1/4"	2 1/2"	1 1/2"	45°	3/4"	100	1.76	✓
KHBMSZW0250300	1/4"	3"	1 1/2"	45°	3/4"	100	1.97	✓
KHBMSZW0250350	1/4"	3 1/2"	1 1/2"	45°	3/4"	100	2.19	✓
KHBMSZW0250400	1/4"	4"	1 1/2"	45°	3/4"	100	2.44	✓
KHBMSZW0250450	1/4"	4 1/2"	1 1/2"	45°	3/4"	100	2.65	✓
KHBMSZW0250500	1/4"	5"	1 1/2"	45°	3/4"	100	2.85	✓
KHBMSZW0250600	1/4"	6"	1 1/2"	45°	3/4"	50	1.65	✓
KHBMSZW0250800	1/4"	8"	1 1/2"	45°	3/4"	50	2.08	✓



## 1/4"BSW J BOLT KIT MILD STEEL (incl. 1 Nut)

Part	A	Nominal Bore	W	L	T	D	Pack	Pack Wgt (Kg)	Stock Z/P	
KJRMSZW0250050	1/4"	1/2"	15	7/8"	2 3/8"	1 1/2"	3/4"	100	1.97	✓
KJRMSZW0250075	1/4"	3/4"	20	1 1/16"	2 3/4"	1 1/2"	3/4"	100	2.15	✓
KJRMSZW0250100	1/4"	1"	25	1 3/8"	2 7/8"	1 1/2"	1 1/8"	100	2.46	✓
KJRMSZW0250125	1/4"	1 1/4"	32	1 1/4"	3 1/4"	1 1/2"	1 3/8"	100	2.82	✓
KJRMSZW0250150	1/4"	1 1/2"	40	1 5/16"	3 3/4"	1 1/2"	1 1/2"	100	3.14	✓
KJRMSZW0250175	1/4"	1 3/4"	45	2 7/32"	4 1/8"	1 1/2"	1 5/8"	100	3.41	✓
KJRMSZW0250200	1/4"	2"	50	2 3/8"	4 3/8"	1 1/2"	1 7/8"	100	3.60	✓



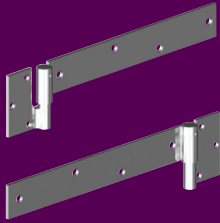
? = G: Hot Dip Galvanise (HDG)    Z: Zinc Plate (Z/P)    Y: Zinc Yellow Passivate (ZYP)    P: Plain (PLN)



LOW-TENSILE

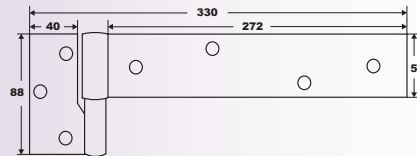
# Ball Bearing Hinges

Extra Tough Double Welded Construction  
Zinc Plate

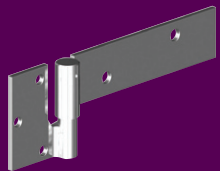


## H1 - STANDARD GATE HINGE (incl. Coach Screws)

Part	Fixing	Timber Gate Width (mm)	Bush (mm)	Pin (mm)	Pack	Pack Wgt (Kg)	Stock per pair Z/P
GHBZ1DL	Left Hand	1800	19	16	5 pair	7.00	✓
GHBZ1DR	Right Hand	1800	19	16	5 pair	7.00	✓

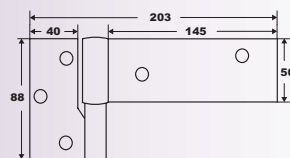


Suitable for timber-to-steel or steel-to-steel gate design.  
9.5mm hole suitable for 8mm coach screws.

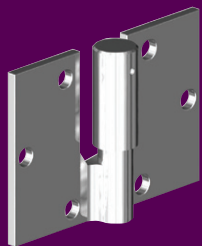


## H1S - SHORT GATE HINGE (incl. Coach Screws)

Part	Fixing	Timber Gate Width (mm)	Bush (mm)	Pin (mm)	Pack	Pack Wgt (Kg)	Stock per pair Z/P
GHBZ1SL	Left Hand	1500	19	16	5 pair	6.42	✓
GHBZ1SR	Right Hand	1500	19	16	5 pair	6.42	✓

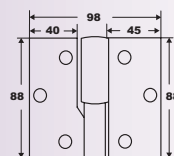


Suitable for timber-to-steel or steel-to-steel gate design.  
9.5mm hole suitable for 8mm coach screws.



## H1B - BUTT GATE HINGE (incl. Coach Screws)

Part	Fixing	Timber Gate Width (mm)	Bush (mm)	Pin (mm)	Pack	Pack Wgt (Kg)	Stock per pair Z/P
GHBZ1BL	Left Hand	900	19	16	5 pair	5.46	✓
GHBZ1BR	Right Hand	900	19	16	5 pair	5.46	✓



Suitable for timber-to-steel or steel-to-steel gate design.  
9.5mm hole suitable for 8mm coach screws.



# Ball Bearing Hinges

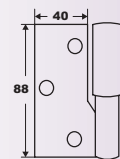
Extra Tough Double Welded Construction  
Zinc Plate



## H2 - HINGE (incl. Coach Screws)

Part	Fixing	Bush (mm)	Pin (mm)	Pack	Pack Wgt (Kg)	Stock per pair Z/P
GHBZ2WL	Left Hand	19	16	5 pair	3.82	✓
GHBZ2WR	Right Hand	19	16	5 pair	3.82	✓

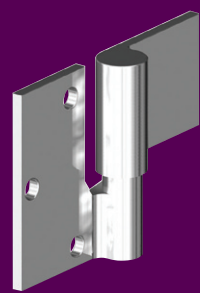
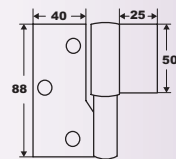
9.5mm hole suitable for 8mm coach screws.



## H2A - HINGE (incl. Coach Screws)

Part	Fixing	Bush (mm)	Pin (mm)	Pack	Pack Wgt (Kg)	Stock per pair Z/P
GHBZ2AL	Left Hand	19	16	5 pair	4.24	✓
GHBZ2AR	Right Hand	19	16	5 pair	4.24	✓

9.5mm hole suitable for 8mm coach screws.

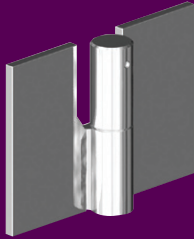




LOW-TENSILE

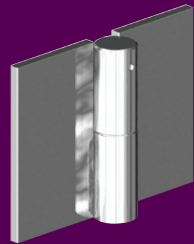
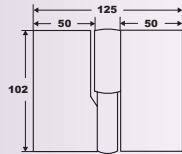
# Ball Bearing Hinges

Extra Tough Double Welded Construction  
Zinc Plate



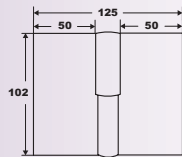
## H3 - HEAVY DUTY HINGE

Part	Fixing	Bush (mm)	Pin (mm)	Pack	Pack Wgt (Kg)	Stock per pair Z/P
GHBZ3DL	Left Hand	19	16	5 pair	6.50	✓
GHBZ3DR	Right Hand	19	16	5 pair	6.50	✓



## H3P - HEAVY DUTY BUTT HINGE

Part	Fixing	Bush (mm)	Pin (mm)	Pack	Pack Wgt (Kg)	Stock per pair Z/P
GHBZ3PL	Left Hand	19	16	5 pair	6.86	✓
GHBZ3PR	Right Hand	19	16	5 pair	6.86	✓



No gaps for maximum security.

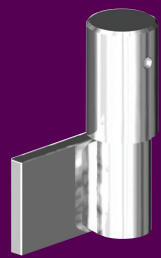
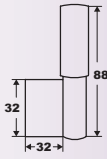
# Ball Bearing Hinges

Extra Tough Double Welded Construction  
Zinc Plate



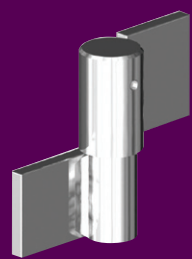
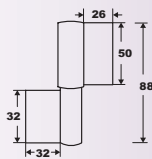
## H5 - HINGE

Part	Fixing	Bush (mm)	Pin (mm)	Pack	Pack Wgt (Kg)	Stock per pair Z/P
GHBZ5DL	Left	19	16	5 pair	2.64	✓
GHBZ5DR	Right	19	16	5 pair	2.64	✓



## H5A - HINGE

Part	Fixing	Bush (mm)	Pin (mm)	Pack	Pack Wgt (Kg)	Stock per pair Z/P
GHBZ5AL	Left Hand	19	16	5 pair	2.66	✓
GHBZ5AR	Right Hand	19	16	5 pair	2.66	✓





# TurnBuckles

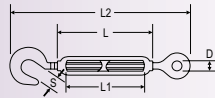
Hot Dip Galvanised

## TURNBUCKLE - OPEN BODY HOOK + EYE

MILD STEEL HDG DIN1480 BODY DIMENSIONS

NEW!  
PRODUCT

Part	T	L	L1	L2	D	S	Pack	Pack Wgt (Kg)	Stock
HTBMSGHEM05	M5	70	48	118	6	6	200	9.00	✓
HTBMSGHEM06	M6	110	86	162	8	8	100	9.10	✓
HTBMSGHEM08	M8	110	80	182	10	10	50	8.25	✓
HTBMSGHEM10	M10	125	89	213	15	15	25	7.25	✓
HTBMSGHEM12	M12	125	83	238	18	18	25	10.75	✓
HTBMSGHEM16	M16	170	116	320	22	22	15	13.80	✓
HTBMSGHEM20	M20	200	132	367	25	25	10	15.30	✓

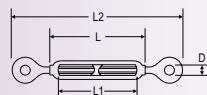


## TURNBUCKLE - OPEN BODY EYE + EYE

MILD STEEL HDG DIN1480 BODY DIMENSIONS

NEW!  
PRODUCT

Part	T	L	L1	L2	D	Pack	Pack Wgt (Kg)	Stock
HTBMSGEEM05	M5	70	48	118	6	200	9.00	✓
HTBMSGEEM06	M6	110	86	162	8	100	9.10	✓
HTBMSGEEM08	M8	110	80	182	10	50	8.25	✓
HTBMSGEEM10	M10	125	89	213	15	25	7.25	✓
HTBMSGEEM12	M12	125	83	238	18	25	10.75	✓
HTBMSGEEM16	M16	170	116	320	22	15	13.80	✓
HTBMSGEEM20	M20	200	132	367	25	10	15.30	✓

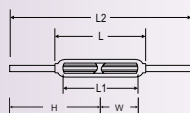


## TURNBUCKLE - OPEN BODY STUB END + STUB END

MILD STEEL HDG DIN1480 BODY DIMENSIONS

NEW!  
PRODUCT

Part	T	L	L1	L2	H	W Thread	Pack	Pack Wgt (Kg)	Stock
HTBMSGSEM08	M8	110	80	240	120	65	60	10.08	✓
HTBMSGSEM10	M10	125	89	300	150	75	50	14.75	✓
HTBMSGSEM12	M12	125	83	300	150	75	35	14.52	✓
HTBMSGSEM16	M16	170	116	400	200	100	20	18.34	✓
HTBMSGSEM20	M20	200	132	440	220	120	10	11.68	✓
HTBMSGSEM24	M24	255	177	520	260	135	5	14.32	✓
HTBMSGSEM30	M30	255	165	520	260	135	2	8.38	✓
HTBMSGSEM32	M32	295	160	600	300	155	2	11.96	✓



Hot Dip Galvanised Body - Plain/Black Stub Ends

# D Shackle & Chain

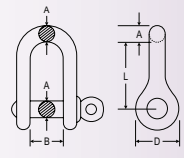
Hot Dip Galvanised



## “D” SHACKLE MILD STEEL HDG



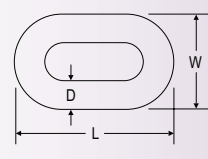
Part	A	L	B	D	Pack	Pack Wgt (Kg)	Stock
HSHMSGDSM05	M5	19	10	10	300	3.30	✓
HSHMSGDSM06	M6	24	12	12	200	4.40	✓
HSHMSGDSM08	M8	32	16	16	200	10.00	✓
HSHMSGDSM10	M10	40	20	20	100	9.00	✓
HSHMSGDSM12	M12	48	26	26	50	8.50	✓
HSHMSGDSM16	M16	60	33	33	25	10.00	✓
HSHMSGDSM20	M20	74	38	38	15	11.70	✓



## CHAIN REGULAR LINK MILD STEEL HDG (NON LIFTING)



Part	D	L	W	Wgt (Kg) per Bucket	Metre per Bucket	Stock
HCHMSGL-03	3	22.0	12.6	25	124.5	✓
HCHMSGL-04	4	27.3	16.0	25	76.0	✓
HCHMSGL-05	5	33.0	19.0	25	48.0	✓
HCHMSGL-06	6	38.5	23.0	25	30.0	✓
HCHMSGL-08	8	48.0	30.0	25	18.5	✓
HCHMSGL-10	10	60.0	35.0	25	11.5	✓
HCHMSGL-12	12	74.5	45.5	25	6.5	✓

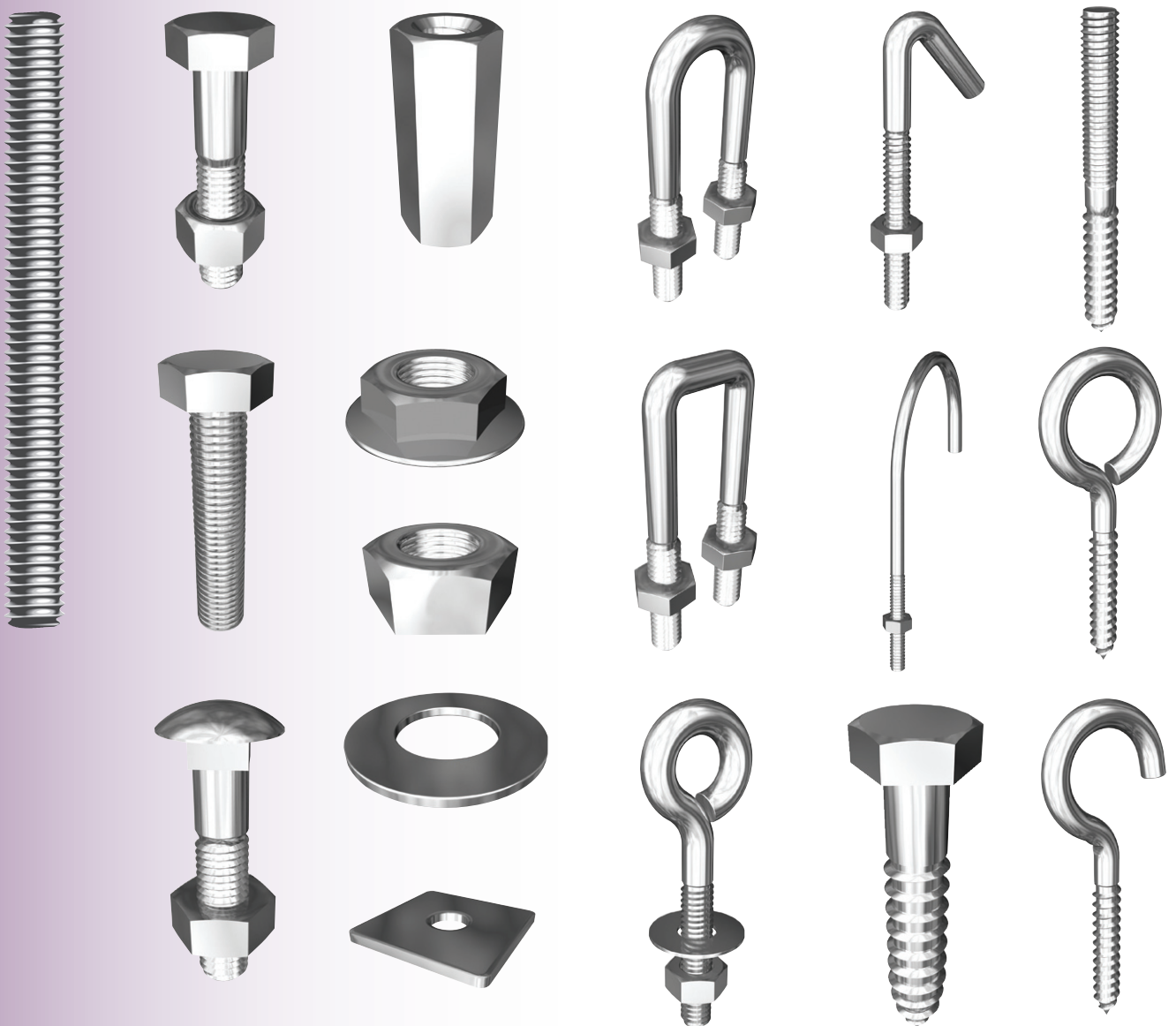


All commercial items shown are not recommended or certified for lifting



# Specials

Hobson Engineering continues to supply quality custom fasteners to the Australian market. As part of our commitment to servicing custom requirements, Hobson now stocks Customer specials for up to 12 months. Contact our Sales Department now for more information and a quote on your next "Made To Order" requirement. Items included are shown below:



# Technical

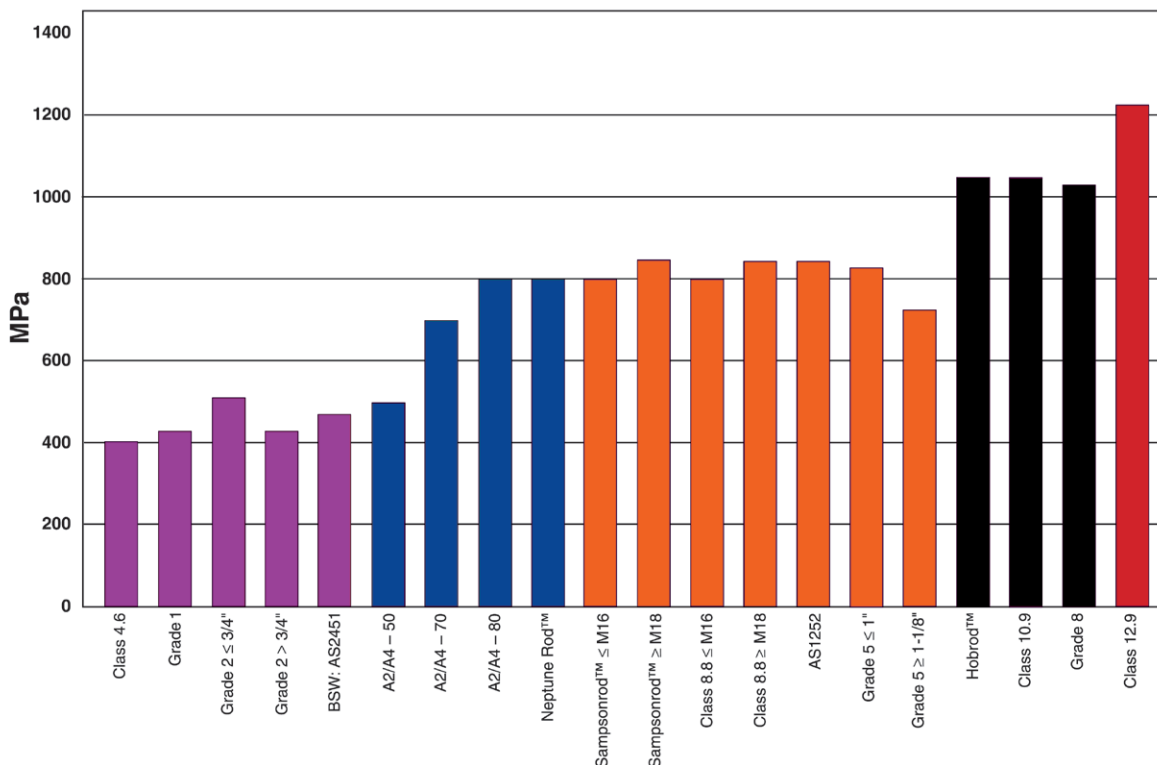
## Colour Code Chart

**Cartons** Hobson Low Tensile Product is now packed in Purple & White Cartons  
**Allthread** Hobson Low Tensile Allthread is identified by colour wrapping and painted ends:

Wrapping	Coating	Colour	
	Zinc Plate	White	
	Hot Dip Galvanised	Yellow	
	Plain	White	 with Green label

Painted Ends	Threadform	Colour	
	BSW	No Paint	
	Metric	No Paint	
	BA	White	
	BSF	Brown	
	UNC	Violet	
	UNF	Tan	
	Left Hand	Pink	

## BREAKING STRENGTH COMPARISON





# Technical - Allthread

Tensile / Yield / Shear Strength  
Tightening Torque

## METRIC ALLTHREAD - RECOMMENDED TIGHTENING TORQUE CLASS 4.6

Size	Pitch (mm)	Stress Area (mm <sup>2</sup> )	Core Area (mm <sup>2</sup> )	Tensile Strength (kN)	Proof Strength (kN)	Shear Strength (kN)	Recommended Tightening Torque		
							Plain (Nm)	Zinc (Nm)	HDG (Nm)
M3	0.50	5.0	4.5	2.0	1.1	1.1	0.4	0.3	0.9
M4	0.70	8.8	7.8	3.5	2.0	1.9	1.0	0.7	2.2
M5	0.80	14.2	12.7	5.7	3.2	3.0	2.1	1.5	4.4
M6	1.00	20.1	17.9	8.0	4.5	4.3	3.5	2.5	7.4
M8	1.25	36.6	32.8	14.6	8.2	7.9	8.6	6.0	18.0
M10	1.50	58.0	52.3	23.2	13.1	12.6	17.0	11.9	35.6
M12	1.75	84.3	76.2	33.7	19.0	18.3	29.6	20.7	62.1
M14	2.00	115.0	104.7	46.0	25.9	25.1	47.1	33.0	98.9
M16	2.00	157.0	144.0	62.8	35.3	34.6	73.5	51.4	154.3
M18	2.50	192.0	175.0	76.8	43.2	42.0	101.1	70.8	212.3
M20	2.50	245.0	225.0	98.0	55.1	54.0	143.3	100.3	301.0
M22	2.50	303.0	281.0	121.2	68.2	67.4	195.0	136.5	409.5
M24	3.00	353.0	324.0	141.2	79.4	77.8	247.8	173.5	520.4
M27	3.00	459.0	427.0	183.6	103.3	102.5	362.5	253.7	761.2
M30	3.50	561.0	519.0	224.4	126.2	124.6	492.3	344.6	1033.8
M33	3.50	694.0	647.0	277.6	156.2	155.3	669.9	468.9	1406.8
M36	4.00	817.0	759.0	326.8	183.8	182.2	860.3	602.2	1806.6
M39	4.00	976.0	912.0	390.4	219.6	218.9	1113.4	779.4	2338.1
M42	4.50	1120.0	1050.0	448.0	252.0	252.0	1375.9	963.1	2889.4
M48	5.00	1470.0	1380.0	588.0	330.8	331.2	2063.9	1444.7	4334.1
M56	5.50	2030.0	1910.0	812.0	456.8	458.4	3325.1	2327.6	6982.8
M64	6.00	2680.0	2520.0	1072.0	603.0	604.8	5017.0	3511.9	10535.6

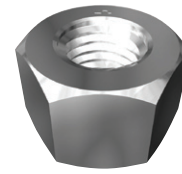
**Note:**

The tightening torque values given in the above table serve only as a guide. A k factor of 0.2 has been used which assumes threads are plain finish, burr free with a light oil coating. It should be noted that these figures are based on the first tightening of single assemblies in isolation.



# Technical - Hex Nuts

Minimum Proof Load



## HEX NUTS - MINIMUM PROOF LOAD (KN)

Nominal Size	Pitch mm	Stress Area mm <sup>2</sup>	Class 5	Class 8	Class 10	Class 12"	AS1252	Mild Steel Hex Coupler	Sampson***
M3	0.50	5.03	2.62	4.02	5.23	5.73	-	2.62	-
M4	0.70	8.78	4.57	7.02	9.13	10.01	-	4.57	-
M5	0.80	14.20	8.24	12.14	14.77	16.19	-	8.24	-
M6	1.00	20.10	11.66	17.49	20.90	22.91	-	11.66	-
M8	1.25	36.60	21.59	31.84	38.06	41.72	-	21.59	44.10
M10	1.50	58.00	34.22	50.46	60.90	66.12	-	34.22	69.89
M12	1.75	84.30	51.42	74.18	88.52	98.63	90.62	51.42	101.58
M14	2.00	115.00	70.15	101.20	120.75	134.55	-	70.15	138.58
M16	2.00	157.00	95.77	138.16	164.85	183.69	168.78	95.77	189.19
M18	2.50	192.00	120.96	176.64	203.52	224.64	-	120.96	231.36
M20	2.50	245.00	154.35	225.40	259.70	286.65	263.38	154.35	295.23
M22	2.50	303.00	190.89	278.76	321.18	354.51	325.73	190.89	365.12
M24	3.00	353.00	222.39	324.76	374.18	413.01	379.48	222.39	425.37
M27	3.00	459.00	289.17	422.28	486.54	537.03	493.43	289.17	553.10
M30	3.50	561.00	353.43	516.12	594.66	656.37	603.08	353.43	676.01
M33	3.50	694.00	437.22	638.48	735.64	811.98	746.05	437.22	836.27
M36	4.00	817.00	514.71	751.64	866.02	955.89	878.28	514.71	984.49
M39	4.00	976.00	614.88	897.92	1034.56	1141.92	-	614.88	1176.08
M42*	4.50	1121.00	706.23	1031.32	1188.26	1311.57	-	706.23	1350.81
M48*	5.00	1473.00	927.99	1355.16	1561.38	1723.41	-	927.99	1774.97
M52*	5.00	1758.00	1107.54	1617.36	1863.48	2056.86	-	1107.54	2118.39
M64*	6.00	2676.00	1685.88	2461.92	2836.56	3130.92	-	1685.88	3224.58

\* Extrapolated. \*\* Extrapolated for >M16. \*\*\* Extrapolated >M36

more technical information available online at [www.hobson.com.au](http://www.hobson.com.au)



# Technical - Thread Table

Size	PITCH (MM)				THREADS PER INCH				
	Coarse	Fine	Extra Fine	UNC	UN8	UNF	BSW	BSF	
M1.6	-	#0	0.35	-	-	-	80	-	-
M2	-	#1	0.4	-	-	-	72	-	-
-	-	#2	-	-	-	56	-	64	-
M2.5	-	#3	0.45	-	-	48	-	56	-
-	-	#4	-	-	-	40	-	48	-
M3	1/8"	#5	0.5	-	-	40	-	44	40
M3.5	-	#6	0.6	-	-	32	-	40	-
M4	-	#8	0.7	-	-	32	-	36	-
M5	3/16"	#10	0.8	-	-	24	-	32	24
-	-	#12	-	-	-	24	-	28	-
M6	1/4"	-	1	-	-	20	-	28	20
M8	5/16"	-	1.25	1	-	18	-	24	18
M10	3/8"	-	1.5	1.25	1	16	-	24	16
-	7/16"	-	-	-	-	14	-	20	14
M12	1/2"	-	1.75	1.5	1.25	13	-	20	12
M14	9/16"	-	2	1.5	-	12	-	18	12
M16	5/8"	-	2	1.5	-	11	-	18	11
M18	-	-	2.5	1.5	-	-	-	-	-
M20	3/4"	-	2.5	1.5	-	10	-	16	10
M22	7/8"	-	2.5	1.5	-	9	-	14	9
M24	1"	-	3	2	-	8	8	12 (14)	8
M27	1 1/8"	-	3	2	-	7	8	12	7
M30	1 1/4"	-	3.5	2	-	7	8	12	7
M33	1 3/8"	-	3.5	2	-	6	8	12	6
M36	1 1/2"	-	4	3	-	6	8	12	6
M39	1 5/8"	-	4	3	-	-	8	-	5
M42	-	-	4.5	-	-	-	-	-	-
M45	1 3/4"	-	4.5	-	-	5	8	-	5
M48	1 7/8"	-	5	-	-	-	8	-	-
M52	2"	-	5	-	-	4.5	8	-	4.5
M56	2 1/4"	-	5.5	-	-	4.5	8	-	4
M60	-	-	5.5	-	-	-	-	-	-
M64	2 1/2"	-	6	-	-	4	8	-	4
M72	2 3/4"	-	6	-	-	4	8	-	3.5
M80	3"	-	6	-	-	4	8	-	3.5
-	3 1/4"	-	-	-	-	4	8	-	3.25
M90	3 1/2"	-	6	-	-	4	8	-	3.25
-	3 3/4"	-	-	-	-	4	8	-	3
M100	4"	-	6	-	-	4	8	-	3

# Terms and Conditions



The Company and the Customer each agree with the other as follows:

## DEFINITIONS

Company means Hobson Engineering Pty Limited (A.B.N. 38 000 289 958).

Customer means the party described as the customer in the Delivery Docket as amended by the Invoice.

Delivery Docket means the document furnished by the Company to the Customer.

GST has the same meaning as given in A New Tax System (Goods and Services Tax) Act 1999 ("Act").

Invoice means a tax invoice (as defined in the Act) furnished by the Company to the Customer in respect of the product.

Product means the goods described as the product in the Delivery Docket as amended by the Invoice.

Purchase Order means the request by the Customer for the Product which is accepted by the Company.

Sum means the price and other monies payable for the Product together with GST payable on the supply of the Product.

## SUPPLY

The Company supplies to the Customer the Product in accordance with these terms and conditions as varied in writing by the Company. Any variation in writing by the Company shall take precedence to these terms and conditions. We reserve the right to supply 316 stainless steel in lieu of 304 stainless steel.

## PRICE

The Sum is set forth in the Purchase Order as amended by the Invoice. The Customer agrees that the Sum set forth in the Purchase Order may be amended by the Invoice in respect of the following:

arithmetic error; and

GST payable on the supply of the Product not included or incorrectly calculated in the Sum.

In addition to the price the Customer agrees, if so requested by the Company, to pay:

any increase in any GST taxes and duties which the Company may be required to collect or pay in respect of the Product after the date of the Delivery Docket; and

interest accruing on a daily basis on the unpaid balance of the Sum from the due date for payment until actual receipt at the rate of 1 per cent per month.

## PAYMENT

The Customer must pay the Sum within 30 days of the end of the month in which the Product is delivered to the Customer unless otherwise determined by the Company.

## TITLE AND RISK

Notwithstanding any other term and condition, the parties agree that the risk of the Product passes on delivery, but title to the Product does not pass until the Sum is paid in full. Until such time as the Sum is paid in full the Customer is only at liberty to sell the Product in the ordinary course of its business as agent for the Company on the condition that it holds on trust and accounts to the Company for the proceeds thereof. Pending the passing of title to the Product the Company may require the Customer to mark the Product as being the property of the Company.

## ACCEPTANCE

The initialling or signing of the Delivery Docket by the Customer or representative of the Customer shall constitute acceptance of the Product in accord with these terms and conditions.

## RETURNS AND ALLOWANCES

The Customer must satisfy itself within 14 days of the date of delivery of the Product with the type and quantity of the Product. In the event that the Customer considers it has not received the appropriate type and or quantity of Product it must notify the Company in writing within 14 days of the date of delivery of the Product. The notice must refer to the Delivery Docket number, the delivery date, the invoice number (if applicable) and provide adequate details of the incorrect type and or quantity of Product.

As a consequence of this condition the receipt of Products by the Company, returned by the Customer does not constitute acceptance of the Product. Acceptance by the Company shall only be given by the Company, in writing, after the Product has been inspected and found satisfactory in the opinion of the Company. In the event that the Company does not accept the Product the Customer will be notified and the Product made available to the Customer. As a consequence of this condition no transport or freight costs shall be borne by the Company unless agreed to in writing by the Company.

## EXCLUSION OF WARRANTY

Nothing in this agreement excludes, restricts or modifies any condition, warranty or liability which may at any time be implied by the Trade Practices Act or Sales of Goods Act (NSW) or equivalent State or Territory legislation or any other law where to do so is illegal or would render any provision of this agreement void.

Where the Company is responsible pursuant to the aforesaid condition warranty or liability which can not be excluded the parties agree that the Company shall only be liable for the cost of repair or the resupply of the Product. Subject to this condition any express or implied condition, statement or warranty (statutory or otherwise) in respect of the Product is expressly negated and excluded.

## GENERAL

The validity, interpretation and performance of this agreement will be governed by and construed in accordance with the law of the State of New South Wales and of the Commonwealth of Australia which the parties acknowledge is the proper law of this agreement. Each of the parties irrevocably agrees that the Courts of the State of New South Wales and of the Commonwealth of Australia will have jurisdiction to hear and determine any suit, action or proceedings, and to settle any dispute, which may arise out of or in connection with this agreement and for this purpose irrevocably submits to the jurisdiction of such Courts.

DISCOUNTS as advised are applicable to the prices shown in this price list.

PRICES The resale prices or discounts referred to in the price list are recommended only and there is no obligation to comply with the recommendation. Prices are subject to GST where applicable.

Minimum invoice value is \$40.00

SHIPPING QUANTITIES On specially manufactured items ( $\pm 10\%$ ).

VALIDITY ON SPECIAL QUOTATIONS 14 days unless otherwise stated.

© Copyright 2005 – No part of this catalogue may be published without the written consent of the publishers.

Note: Due to research and development, products are continually improved. This may lead to the specifications being changed without notice.

As part of our ongoing commitment to serve your fastener needs, please let us know if there are any products which we lack.

Also, if you've got any comments on this year's Catalogue, let us know. We'll consider your feedback when we produce next year's. This catalogue is for you to use – so if it's use can be made easier, then make sure you tell us! Our aim is to have the best catalogue possible as well as the best products.

