

DID YOU KNOW?



about our... **DROP-IN PRO ANCHORS & SETTING TOOL**

Page 1 of 4

The Hobson Drop-In PRO Anchor is a versatile medium duty anchor that delivers ample load bearing performance at shallow embedment's.

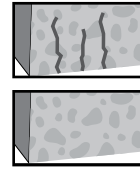
An expansion wedge inside the anchor is pushed towards the bottom end, thus producing expansion forces. The generated expansion force produces frictional resistance during anchor loading.

Features

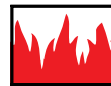
- » Suitable for light to medium duty loads
- » Extremely versatile
- » Quick and easy install
- » Immediate loading is possible
- » Visual check for correct setting when used with the Hobson Drop-In PRO setting tool
- » Fire Resistance
- » Approved for multiple use in cracked and non-cracked concrete for non-structural applications

Applications

- » Hand rail fastening
- » Formwork support fastening
- » Mechanical, electrical and pipe bracket fastening
- » Hanger systems for pipes, cable trays, ducts, ceiling frames



CONSTRUCT PRO



DROP-IN PRO ANCHOR ZINC PLATED / ETA OPT 7 / PART 6

Part	QFind	Size (mm)	Length L (mm)	Pack Qty
EDIMSZ73M06025	EDI105	M6	25	100

DROP-IN PRO ANCHOR ZINC PLATED / ETA OPT 7 / PART 6 / FIRE RATED

Part	QFind	Size (mm)	Length L (mm)	Pack Qty
EDIMSZ76M08030	EDI106	M8	30	100
EDIMSZ76M10040	EDI107	M10	40	50
EDIMSZ76M12050	EDI108	M12	50	50

Bolt Tension | Anti-Vibration | Product Reliability | Traceability

hobson.com.au **QUALITY FASTENERS SINCE 1935**



DID YOU KNOW?

about our... **DROP-IN PRO ANCHORS & SETTING TOOL**

Page 2 of 4



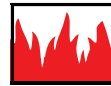
DROP-IN PRO ANCHOR WITH LIP ZINC PLATED / ETA OPT 7 / PART 6

Part	QFind	Size	Length	Pack Qty
		(mm)	L (mm)	
EDLMSZ73M06025	EDL100	M6	25	100



DROP-IN PRO ANCHOR WITH LIP ZINC PLATED / ETA OPT 7 / PART 6 / FIRE RATED

Part	QFind	Size	Length	Pack Qty
		(mm)	L (mm)	
EDLMSZ76M08030	EDL101	M8	30	100
EDLMSZ76M10040	EDL102	M10	40	50
EDLMSZ76M12050	EDL103	M12	50	50
EDLMSZ76M16065	EDL104	M16	65	25

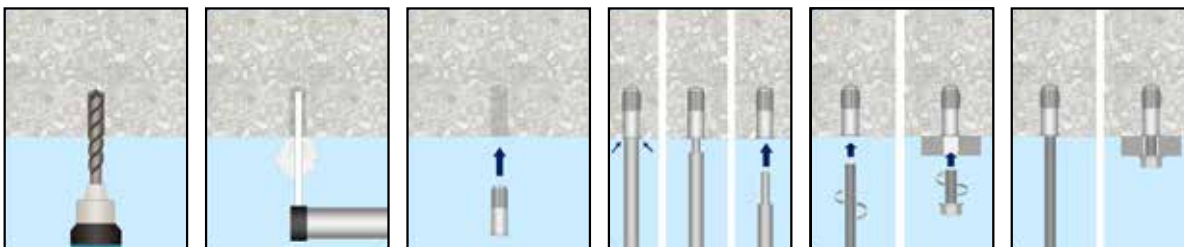


DROP-IN PRO SETTING TOOL ZINC PLATED (ROHS COMPLIANT) / ETA

Part	Size	Length	Pack Qty
		L (mm)	
EDTMSZM06	M6	25	1
EDTMSZM08	M8	30	1
EDTMSZM10	M10	40	1
EDTMSZM12	M12	50	1
EDTMSZM16	M16	65	1
EDTMSZM20	M20	80	1



Installation



CONSTRUCT PRO

Bolt Tension | Anti-Vibration | Product Reliability | Traceability

hobson.com.au **QUALITY FASTENERS SINCE 1935**




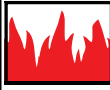
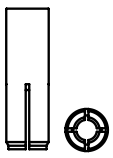


DID YOU KNOW?

about our... **DROP-IN PRO ANCHORS & SETTING TOOL**

Page 3 of 4



Label Sample

ZINC PLATED (ROHS COMPLIANT) DROP-IN PRO ANCHOR ETA OPT 7 / PART 6 / FIRE RATED		
M8 X 30		
QFind: 100 pcs		
EDI106		
CONSTRUCT - PRO		
EDIMSZ76M08030	DOC: 10010	
	PO: 76214 NS2 CTN WGT: 1.20kg	
<small>Hobson Engineering Co Pty Ltd, 10 Clay Place, Eastern Creek, NSW 2766, Australia</small>		

Logo's Explained



= ETA
European Technical Assessment



= Cracked concrete



= Fire resistance rated



= Non-cracked Concrete

Conxtract® PRO Carton



CONSTRUCT PRO

Bolt Tension | Anti-Vibration | Product Reliability | Traceability

hobson.com.au **QUALITY FASTENERS SINCE 1935**



DID YOU KNOW?



about our... **DROP-IN PRO ANCHORS & SETTING TOOL**

Page 4 of 4

How to download ETA's

1

2

3

DOC Link	Description	Prefix
10012	Hobson XBot PRO Hex Concrete Screw Anchor	EXHMSR15M
10021	Hobson XBot PRO Stud Concrete Screw Anchor	EXMSZD18M
10011	Hobson H-IT PRO Splice Wedge Anchor	EHWMSZ537M
10010	Hobson PRO Drop In Anchor Opt. 7	EDI / EDL
10010	Hobson PRO Drop In Anchor Part 6	EDI / EDL

ZINC PLATED (ROHS COMPLIANT)
DROP-IN PRO ANCHOR
ETA OPT 7 / PART 6 / FIRE RATED

M8 X 30

QFind: 100 pcs
EDI106

CONSTRUCT - PRO

EDIMSZ76M08030 **DOC: 10010**

9 350629 116622 PO: 76214 NS2
CTN WGT: 1.20kg

Hobson Engineering Co Pty Ltd, 10 Clay Place, Eastern Creek, NSW 2766, Australia

4

CONSTRUCT PRO

Bolt Tension | Anti-Vibration | Product Reliability | Traceability

hobson.com.au **QUALITY FASTENERS SINCE 1935**

