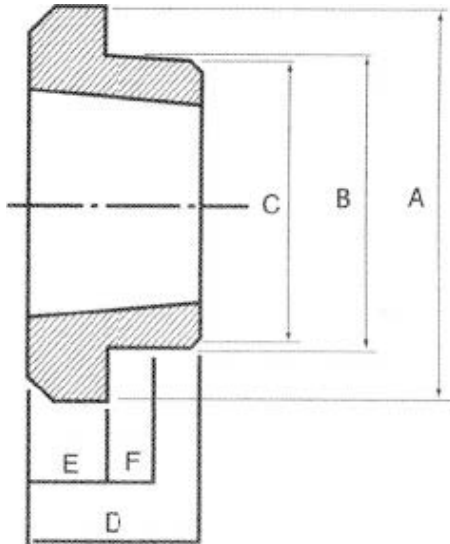


Taper Bore Weld On Hubs are drilled, tapered and bored to receive standard taper bushings. The extended flange provides a convenient means for welding devices, which must be firmly fastened to a shaft.



Part No.	Bush No.	A	B	C	D	E	F
W12	1215	73.03	63.5	62.71	38.1	15.88	9.53
W16	1615	82.55	73.03	72.24	38.1	15.88	9.53
W20	2017	101.6	88.9	88.11	44.45	19.05	14.45
W25	2517	127	111.13	110.34	44.45	19.05	14.45
W30	3030	149.86	133.35	132.56	76.2	25.4	19.05
W35	3535	184	159	158	89	32	25
W40	4040	225	197	196	102	32	32
W45	4545	254	222	221	114	38	38
W50	5050	276	240	240	127	38	38

Part No.	Bush No.	A	B	C	D	E	F
WH12	1210	70	65	64.5	25	9	10
WH16	1610	80	75	74.5	25	9	10
WH20	2012	95	90	89.5	32	12	12
WH25	2517	115	110	109.5	44	19	15
WH30	3020	145	140	139.5	50	20	15
WH35	3525	190	180	179	65	25	25