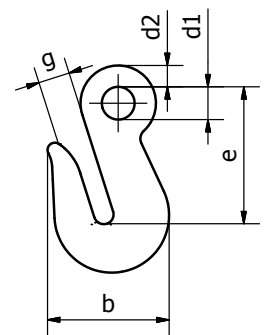


MASTER LINKS AND SETS FOR G100 ASSEMBLY SYSTEMS (CONT'D)

BEAVER – EYE SHORTENING GRAB HOOK – GRADE 100

Code	Chain Size mm	WLL (kg)	e mm	b mm	d1 mm	d2 mm	g mm	Approx Weight (kg)	UOM	Pack Qty
PW8	7-8	2500	71	58	20	12	11	0.4	Each	80
PW10	10	4000	88	76	22	15	13	0.9	Each	30
PW13	13	6700	113	101	26	18	17	1.8	Each	15
PW16	16	10000	129	118	32	23	19	3.6	Each	8
PW20	20	16000	151	150	36	27	25	6.15	Each	5
PW22	22	19000	170	165	42	31	27	8.3	Each	3
PW26	26	26500	201	195	50	37	32	13.8	Each	2
PW32	32	31500	240	210	60	40	39	18.6	Each	1

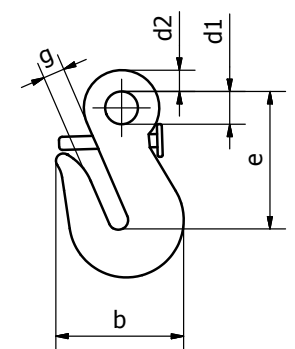


Used for the shortening of chain sling legs. It's the first grab hook in Grade 100 on the market. Due to its unique design there is no deration in the load capacity. This is due to the 4 fold feature of the hooks supporting cradle design.

No Deration

BEAVER – EYE GRAB HOOK C/W SAFETY PIN – GRADE 100

Code	Chain Size mm	WLL (kg)	e mm	b mm	d1 mm	d2 mm	g mm	Approx Weight (kg)	UOM	Pack Qty	Replacement Pin Kit
PSW7-8	8	2500	71	58	20	12	11	0.4	Each	1	PSGW7/8
PSW10	10	4000	88	76	22	15	13	0.9	Each	1	PSGW10
PSW13	13	6700	113	101	26	18	17	1.8	Each	1	PSGW13
PSW16	16	10000	129	118	32	23	19	3.6	Each	1	PSGW16



The first grade 100 eye shortening safety grab hook which prevents the accidental release of the chain whilst still providing no deration in capacity. This feature is useful when the chains have been loaded fully as there is no possibility of the chain becoming dislodged from the grab hook. Meaning once you have adjusted the legs there is no need to adjust them again.

No Deration