

WHEN YOU HAVE SERIOUS WORK  
TO DO, BRING IN A SPECIALIST

SUPERIOR PERFORMING PRODUCTS FOR YOUR SPECIALTY NEEDS



SPECIALIST™

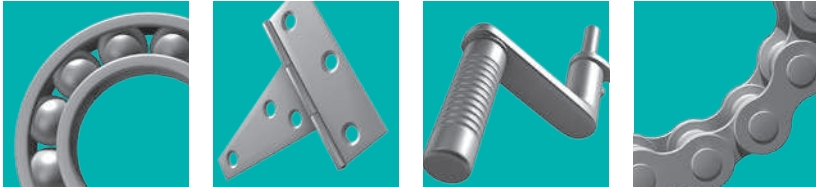
# HIGH PERFORMANCE WHITE LITHIUM GREASE

WD-40 Specialist High Performance White Lithium Grease is a higher viscosity solution that delivers long-term lubrication that won't drip nor run. It's great for metal-to-metal applications and reducing friction to ensure tools and equipment keep moving smoothly. The product can be used on load-bearing metal connections.

## FEATURES AND BENEFITS

- Use on metal-to-metal applications
- Water and heat resistant
- Long-lasting protection against rust and corrosion
- Ideal for load-bearing applications
- High viscosity
- Withstands temperatures of -30°C to +150°C\*

## APPLICATIONS



Motor Pivot Points · Bearings · Winches · Latches · Pistons · Conveyors · Overhead Door Tracks · Cables · Bearings · Runners · Water Pumps · Gear and Brake Mechanisms · Metal Parts · Hinges and Catches

## DIRECTIONS

Shake can well. Apply by spraying directly on surface to be lubricated and protected.

## TECHNICAL

|                       |   |
|-----------------------|---|
| Product               | High Performance White Lithium Grease   |
| Appearance            | Turbid white liquid when uniform. When left to settle: clear liquid with white precipitate on the bottom. |
| Odour                 | Pleasant citrus fragrance   |
| Specific Gravity (SG) | SG at 25°C (0.820 - 0.830)  |
| Temperature range     | Effective performance at temperatures from -30°C to +150°C*   |
| Flammability          | Classed as extremely flammable under current legislation  |
| Compatibility         | Ideal for metal-to-metal application  |

## PACKAGING

| Product Number | Unit Size  | Case Size |
|----------------|------------|-----------|
| 21002          | 300g/454mL | 6         |

\*after all solvent is evaporated



WD-40 Company (Australia) Pty Ltd. PO Box 649, Epping NSW 1710,  
Phone (02) 9868 2200 Fax (02) 9869 7512 platinum@wd40.com WD40.COM.AU