



EL SERIES

# SERVICE INSTRUCTIONS

## G10030 Air Operated Grease Gun

### Description

Model G10030 is our EL (Entry Level) air operated grease gun designed and engineered for 450gm grease cartridges or bulk grease. The G10030 provides the user with the flexibility of a continuous flow of grease or one shot trigger action. The gun comes complete with a separate air vent & filler nipple, a separate bleeder valve and a 30cm long high pressure flexible extension and hydraulic coupler.

### Specifications

Uses	Air Operated Grease Gun - 450gm grease cartridge fill or bulk grease fill. Suitable for most greases up to NLGI2
Discharge Qty	Single shot: Approx. 1cc per shot. Continuous Flow: Approx 3.5cc per shot or 210cc per minute (without counter pressure) using NLGI2
Grease Pressure	40:1 ratio. Maximum operating pressure 6,000psi
Air Pressure	Min: 60psi / Max: 150psi. Recommended operating pressure 90psi
Weight	1.8kg

### Operating Instructions for 3 Way Loading Cartridge Loading

- Remove the gun head from the barrel.
- Draw back the plunger handle all the way.
- Insert the open end of the cartridge into the barrel & push all the way in. Remove the seal or pull tab end from the cartridge.
- Reassemble the gun head to the barrel. Press the catch plate & release the plunger rod. Pull down the plunger handle.

### Loading Via a Bulk Loader Pump

- Draw back the plunger handle all the way.
- Insert loader nipple into the loader pump valve. Make sure the nipple is the type that fits the loader valve.
- Operate the grease gun from the loader pump.
- Disconnect the grease gun from the loader pump. Press the catch plate & release the plunger rod. Pull down the plunger handle.

### Bulk Filling

- Remove the gun head from the barrel.
- Draw back plunger entirely. Fill bulk grease into empty container tube. Reassemble the gun head to the barrel. Press the catch plate & release the plunger rod. Pull down the plunger handle.

### Important

\*Add oil daily through air fitting before use.

If your gun stops pumping, it may be due to air pockets in the gun. To remove the air, unscrew the gun head 1 to 2 turns and do the following: Draw back plunger rod fully & release quickly. Repeat several times. This will help exert force to move the follower cup into the cartridge & expel the air pockets which is essential for a grease gun to work. Push plunger rod all the way in. Tighten the head to the barrel. If cartridge loading is being used, it could cause the follower cup to warp & contract over time when inside a grease cartridge & soaking in grease over time.

- If you change the loading way to pump loading or bulk loading, there is a normal phenomenon that a little amount of grease may seep out from the bottom of the barrel.
- In order to avoid this happening, please review the length of time & best method of loading for you (depending on the variety of grease that your local supplier offers) & use that loading method with minimal change for the best results & longevity of the gun. (Do not use MULTI LOADING alternately)
- The gun is now ready to be used.

### Limited Warranty

- The manufacturer warranty's this product against defects in material & craftsmanship for 12 months from date of purchase.
- The manufacturer's liability is limited to the replacement or repair of the defective material within the warranty period, when returned freight prepaid to Alemlube or our designated service agent.
- The warranty does not cover damage caused by accident, misuse or faulty installation.



NSW

TEL: (02) 9939 0711  
FAX: (02) 9939 0411

VIC/TAS

TEL: (03) 8787 8288  
FAX: (03) 8787 8266

QLD

TEL: (07) 3889 8480  
FAX: (07) 3889 8490

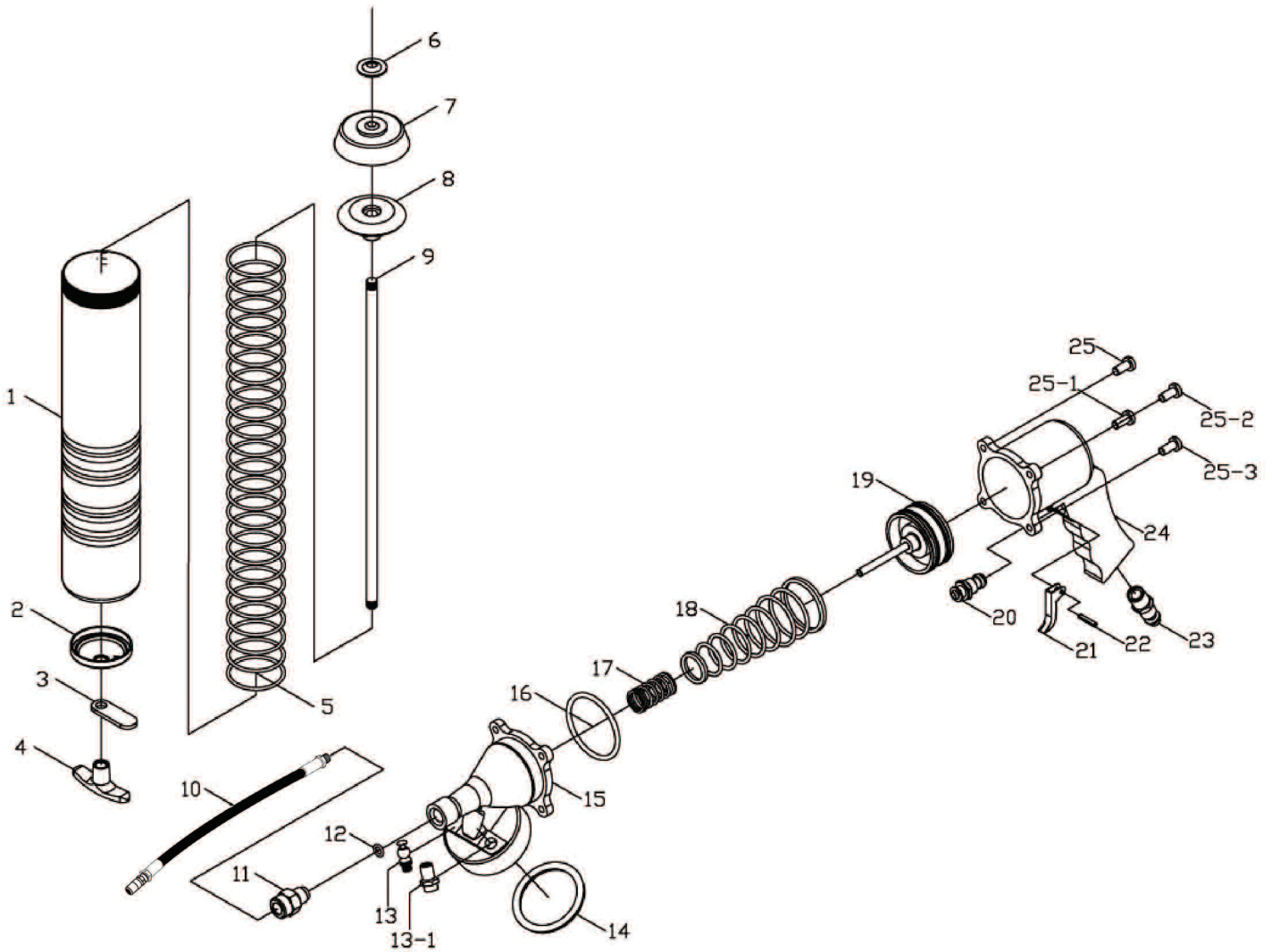
SA/NT

TEL: (08) 8241 7111  
FAX: (08) 8241 7011

WA

TEL: (08) 9209 3066  
FAX: (08) 9209 3933

# Parts And Drawing Breakdown G10030



## Ordering Spare Parts

Parts List – Part No. G10030

Item No.	Part No.	Description	Qty	Item No.	Part No.	Description	Qty
1	G10030-1	450gm Barrel	1	15	G10030-15	Housing cap	1
2	G10030-2	Bottom Barrel cap	1	16	G10030-16	Housing ring	1
3	G10030-3	Catch plate	1	17	G10030-17	Piston spring	1
4	G10030-4	Plunger handle	1	18	G10030-18	Short spring kit	1
5	G10030-5	Long spring kit	1	19	G10030-19	Air piston unit	1
6	G10030-6	Plunger washer	1	20	G10030-20	Switch	1
7	G10030-7	Follower cup	1	21	G10030-21	Trigger	1
8	G10030-8	Backing support	1	22	G10030-22	Pin	1
9	G10030-9	Plunger rod	1	23	G10030-23	Air fitting	1
10	G10030-10	Flex ext & coupler	1	24	G10030-24	Finger grip handle	1
11	G10030-11	Adapter	1	25	G10030-25	Body screw	1
12	G10030-12	Adapter ring	1	25-1	G10030-25-1	Body screw	1
13	G10030-13	Filler nipple	1	25-2	G10030-25-2	Body screw	1
13-1	G10030-13-1	Air vent valve	1	25-3	G10030-25-3	Body screw	1
14	G10030-14	Head gasket	1				

NSW

TEL: (02) 9939 0711  
FAX: (02) 9939 0411

VIC/TAS

TEL: (03) 8787 8288  
FAX: (03) 8787 8266

QLD

TEL: (07) 3889 8480  
FAX: (07) 3889 8490

SA/NT

TEL: (08) 8241 7111  
FAX: (08) 8241 7011

WA

TEL: (08) 9209 3066  
FAX: (08) 9209 3933

## Trouble Shooting

<b>Problem</b>	1. Gun loses power and loses its prime.
<b>Possible Cause</b>	<ul style="list-style-type: none"> <li>▪ Lack of oil in air motor.</li> </ul>
<b>Remedy</b>	<ul style="list-style-type: none"> <li>▪ Fill a few drops of oil through air inlet and run for a few minutes.</li> </ul>
<b>Problem</b>	2. Gun runs at normal speed but no output.
<b>Possible Cause</b>	<ul style="list-style-type: none"> <li>▪ Air pocket inside barrel.</li> </ul>
<b>Remedy</b>	<ul style="list-style-type: none"> <li>▪ Take off spout from gun head.</li> <li>▪ Unscrew container tube 1-2 turns from gun head.</li> <li>▪ Withdraw plunger rod, push plunger rod into container tube to help expel the air pockets.</li> <li>▪ Draw back plunger rod fully and release quickly.</li> <li>▪ Press trigger to check flowage of grease output fully and without blockage.</li> <li>▪ Repeat above steps if necessary.</li> <li>▪ Re-tighten barrel to gun head firmly.</li> <li>▪ Re-screw spout securely.</li> <li>▪ The air pocket should now be eliminated.</li> <li>▪ Grease gun is ready.</li> </ul>
<b>Problem</b>	3. Gun runs slowly or not running well.
<b>Possible Cause</b>	<ul style="list-style-type: none"> <li>▪ Air motor jammed with dirt particles</li> <li>▪ Power regulator in closed position.</li> <li>▪ Air flow blocked by dirt.</li> </ul>
<b>Remedy</b>	<ul style="list-style-type: none"> <li>▪ Check air inlet filter for blockage.</li> <li>▪ Pour air tool lubricating oil into air inlet as per instructions.</li> <li>▪ Operate gun in short bursts quickly reversing rotating back and forth where applicable.</li> <li>▪ Repeat above if needed.</li> </ul>
<b>Problem</b>	4. Follower cup does not enter the grease cartridge.
<b>Possible Cause</b>	<ul style="list-style-type: none"> <li>▪ Size of cartridge not standard.</li> <li>▪ The end edge of cartridge is rough or irregular.</li> <li>▪ Take off grease cartridge protective cover.</li> </ul>
<b>Remedy</b>	<ul style="list-style-type: none"> <li>▪ Check the size of the 450gm cartridge corresponds to specifications.</li> <li>▪ Grease the perimeter of follower cup or cartridge end to make it easier to enter cartridge.</li> <li>▪ Always use standard size 450gm cartridges.</li> <li>▪ Check the end edge of cartridge that it is not be damaged or folded and remains in an exact round sharp. Otherwise the follower cup will be prevented from entering the grease cartridge and grease cannot be forced out from the cartridge.</li> <li>▪ If this happens, correct the above errors.</li> <li>▪ Do not re-use an empty grease cartridge.</li> <li>▪ Remove a used cartridge from the barrel when bulk loading.</li> </ul>
<b>Problem</b>	5. Leakage from outlet of gun head.
<b>Possible Cause</b>	<ul style="list-style-type: none"> <li>▪ Spout is not screwed on securely.</li> </ul>
<b>Remedy</b>	<ul style="list-style-type: none"> <li>▪ The thread size feature with its tapered design does have the advantage of being leak proof. Screw it with a tool properly and not just by hand to give a good leak proof performance.</li> </ul>

NSW

TEL: (02) 9939 0711  
FAX: (02) 9939 0411

VIC/TAS

TEL: (03) 8787 8288  
FAX: (03) 8787 8266

QLD

TEL: (07) 3889 8480  
FAX: (07) 3889 8490

SA/NT

TEL: (08) 8241 7111  
FAX: (08) 8241 7011

WA

TEL: (08) 9209 3066  
FAX: (08) 9209 3933