



Lifting Your Business to A Higher Level

USER MANUAL

GIRDER TROLLEY & GEARED GIRDER TROLLEY

GT-1: 131005, 131010, 131015, 131020, 131025, 131030

GCT-1: 131505, 131510, 131515, 131520, 131530



1300 100 120

www.austlift.com.au

AUSTRALIAN LIFTING CENTRE PTY LTD



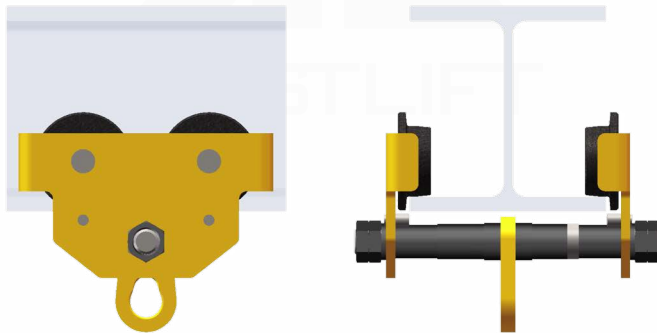
WARNING
New operator must be trained prior to use!

Girder Trolley/Push Trolley

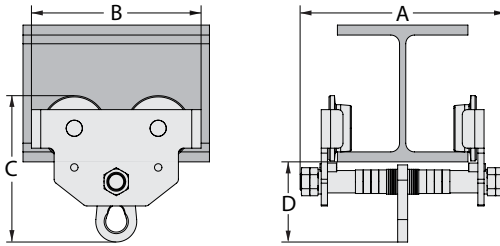
The AUSTLIFT PLAIN TROLLEY is moved by pushing the load lifted by the trolley, running along a flange of a girder. The main shaft has spacers that can be adjusted the width of the girder. They are widely used in factories, mines, wharves, docks, warehouses and engineering workshops for the installation of equipment in places where no power supply is available.

- High quality sealed ball bearings.
- Identification tag with serial number.
- Fitted with anti-drop plates for safety.
- Low headroom by design.

AS/NZS 1418.2	Certified	Proof Tested x2 WLL	WLL From 0.5-10t
------------------	-----------	-------------------------------	----------------------------



Specifications



WLL (t)	CODE	BEAM SIZE (mm)	Min. RADIUS OF CURVE (M)	Wt. (kg)	DIMENSIONS (mm)			
					A	B	C	D
0.5	131005	64-140	0.8	5.5	228	196	192	117.5
1	131010	64-203	0.9	8.9	306	236	211	120
2	131015	76-210	1.0	10.7	318	273	236	130
3	131020	100-305	1.2	24.3	440	320	295	166
5	131025	100-305	1.3	36.3	454	366	333	186
10	131030	125-305	2.0	83.3	486	456	421	252

Application

- Building construction sites
- Ship building yards
- Factory production workshops • Mine production sites
- Engineering workshops

Features

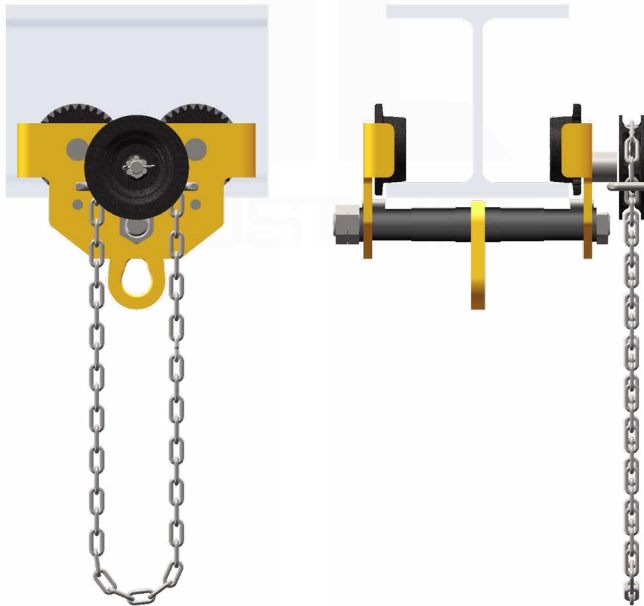
- High quality sealed ball bearings.
- Identification tag with serial number.
- Proof tested to 2 x WLL with certificate.
- Fitted with anti-drop plates for safety.
- Low headroom by design.

Geared Trolley

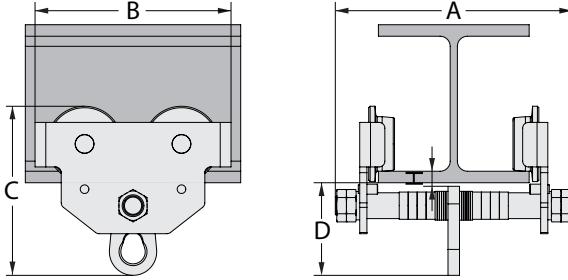
The AUSTLIFT GEARED TROLLEY is hand-operated by pulling the hand-chain, running on the bottom flange of a girder. The main shaft has spacers that can be adjusted the width of the girder. They are widely used in factories, mines, wharves, docks, warehouses and engineering workshops for installation of equipment and conveyance of goods. They are especially suitable for maintenance and repairing of equipment in places where no power supply is available. Standard hand chain is 3 metres however longer chain lengths are available.

- Standard hand chain is 3 metres however longer chain lengths are available.
- High quality sealed ball bearings.
- Identification tag with serial number.
- Fitted with anti-drop plates for safety.
- Low headroom by design.

AS/NZS 1418.2	Certified	Proof Tested x2 WLL	WLL From 1-10t
-------------------------	-----------	----------------------------------	--------------------------



Specifications



WLL (T)	CODE	BEAM SIZE (mm)	Min. RADIUS OF CURVE (M)	Wt. (kg)	DIMENSIONS (mm)				
					A	B	C	D	H
0.5	131005	64-140	0.8	5.5	228	196	192	117	25
1	131010	64-203	0.9	8.9	306	236	211	120	19
2	131015	76-210	1.0	10.7	318	273	236	130	22
3	131020	100-305	1.2	24.3	436	320	295	166	32
5	131025	100-305	1.3	36.3	454	366	333	186	38
10	131030	125-305	2.0	83.3	486	456	421	250	35

* Pulling force is measured when the trolley is in full load.

* NOTE: DO NOT USE CHAIN FROM CHAIN BLOCKS ON GEARED TROLLEYS.

Application

- Building construction sites
- Ship building yards
- Factory production workshops
- Mine production sites
- Engineering workshops

Features

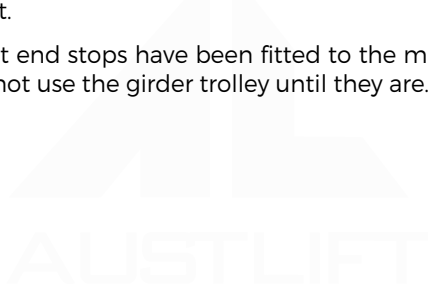
- High quality sealed ball bearings.
- Identification tag with serial number.
- Proof tested to 2 x WLL with certificate.
- Fitted with anti-drop plates for safety.
- Low headroom by design.

How to use the Girder Trolley/Geared Trolley

1. Measure the actual width of the runway girder and ensure the girder is capable to do the job.
2. Assemble the required number of spacer washers equally to the inside of the trolley side plates so that the dimension between Trolley Wheel Flanges is 6mm greater than the Runway Girder width.
3. Assemble the remaining washers outside the Trolley ensuring the protruding hanger pin will not interfere with any obstacle along the runway.
4. Side plate and fit nuts to hanger pin make sure there must be one washer on the inside and the outside of each trolley side plate.
5. Slacken off the hanger pin nuts and spread the side plates so that the wheels can be slipped over the runway girder.
6. Screw nuts firmly against the washers, then suspend a light load from the trolley to ensure that all four wheels are in contact with the runway girder.
7. Screw the nuts tightly against the washers then secure the lock nuts together. For Geared Trolley when assembled at the minimum girder width will require Hanger pin to be offset, so it will not interfere with the hand wheel.
8. To test girder trolley when assembled suspend the maximum weight the trolley is capable of then run the unit slowly along the full length of the runway girder to ensure satisfactory operation.
9. Ensure the trolley lock nuts have been retighten periodically during maintenance procedures.

Care in Use

- Never use a Girder Trolley or Girder Clamp to support or move people. If a load is to be left unattended always lower it to the ground (never leave a suspended load unattended).
- Once the Girder Trolley has been fitted to the beam it is now ready for use.
- Always check that the Girder Trolley has the correct capacity to support the load to be lifted, always include the weight of the lifting device that is to be suspended.
- Connect your lifting device to the suspension point of the girder trolley ensuring that the hook of your lifting device sits centred on the bar, also ensure that the hook sits evenly (make sure that the hook is not being supported by its cheeks).
- The load can now be lifted, ensure that the load is only lifted vertically. Never side pull or side load the Girder Trolley.
- When the trolley is traversing the beam ensure that a slow and even pace is sustained. Never jerk the load as the load will act like a pendulum and may cause an accident.
- Always check that end stops have been fitted to the monorail, if end stops are not fitted do not use the girder trolley until they are.



Warning

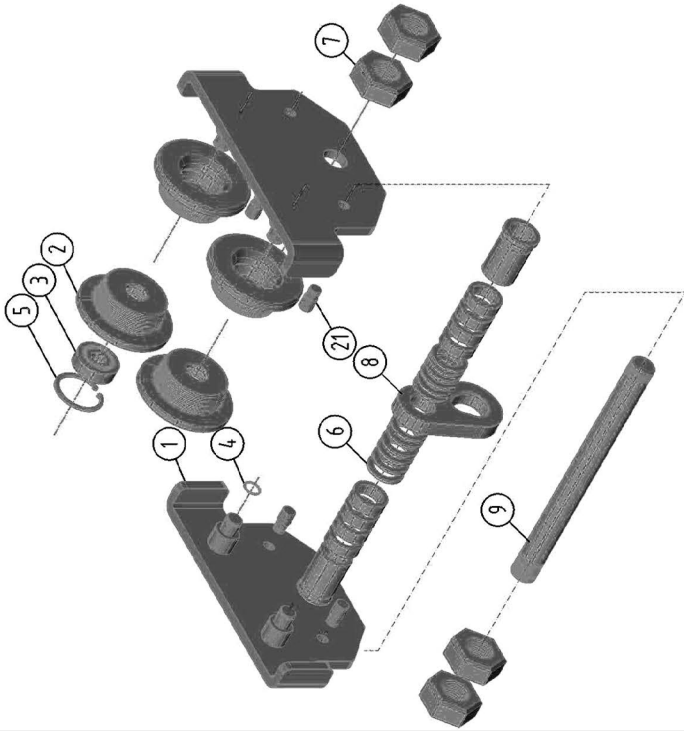
- Do not lift or transport loads over people
- Never leave a suspended load unattended
- Ensure that the rated capacity of the Girder Trolley or Girder Clamp is never exceeded
- Regularly inspect the Girder Trolley or Girder Clamp
- Never modify the Girder Trolley or Girder Clamp in any way
- Never side load the Girder Trolley or Girder Clamp
- As the Trolley Wheels are not fitted with brakes, never use the Girder Trolley on an incline.
- Always wear the appropriate PPE (Personal Protective Equipment)
- Never use these products if under the influence of alcohol or drugs



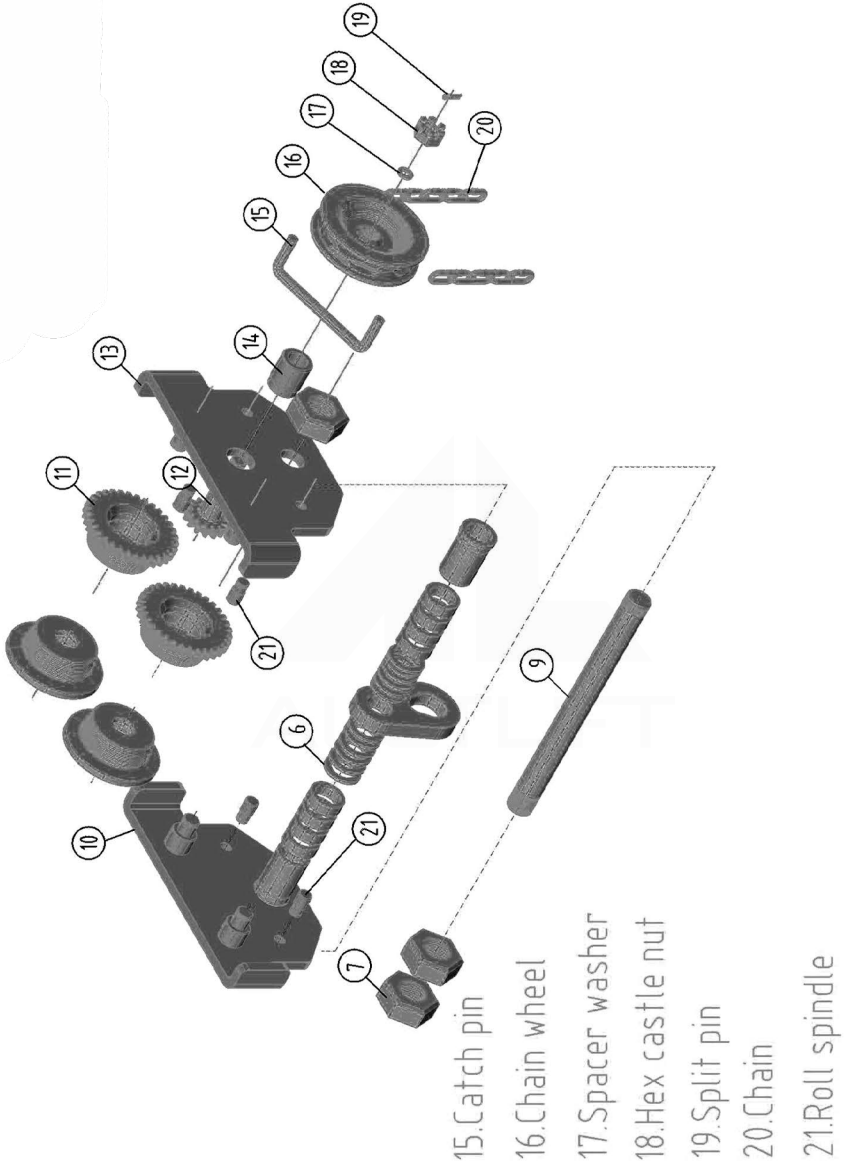
WARNING
New operator must be trained prior to use!

Storage and handling

- The Girder Trolley is equipped with sealed, lifetime lubricated precision ball bearings that should require no further lubrication.
- Regularly inspect the Girder Trolley for damage and that the cotter pin has not become dislodged and the castle nut has not become loose. Apply a thin film of machine oil to the hand chain of a Geared Girder Trolley if required.
- Never over lubricate.



- 1. Two gear case assembly
- 2. Driven wheel
- 3. Bearing
- 4. Axle ring
- 5. Hole ring
- 6. Spacer washer
- 7. Hex nut
- 8. Lifting ring
- 9. Hanger shaft
- 10. Left side gear case assembly
- 11. Tooth gear
- 12. Drive spindle
- 13. Right side gear case assembly
- 14. Axle sleeve



AL AUSTLIFT®



Wholesale of Lifting, Rigging, Load Restraint
& Height Safety products

AUSTRALIAN LIFTING CENTRE



1300 100 120

www.austlift.com.au



Head Office (NSW)

 43 Frank Street
Wetherill Park, NSW 2164
 Ph: 02 9757 2277



QLD Office

 7 Durbell Street
Acacia Ridge, QLD 4110
 Ph: 07 3272 0777

WA Office

 42 Mulgool Road
Malaga, WA 6090
 Ph: 08 9248 6674

VIC Office

 475 Dohertys Road,
Truganina, VIC 3029
 Ph: 03 9314 5525