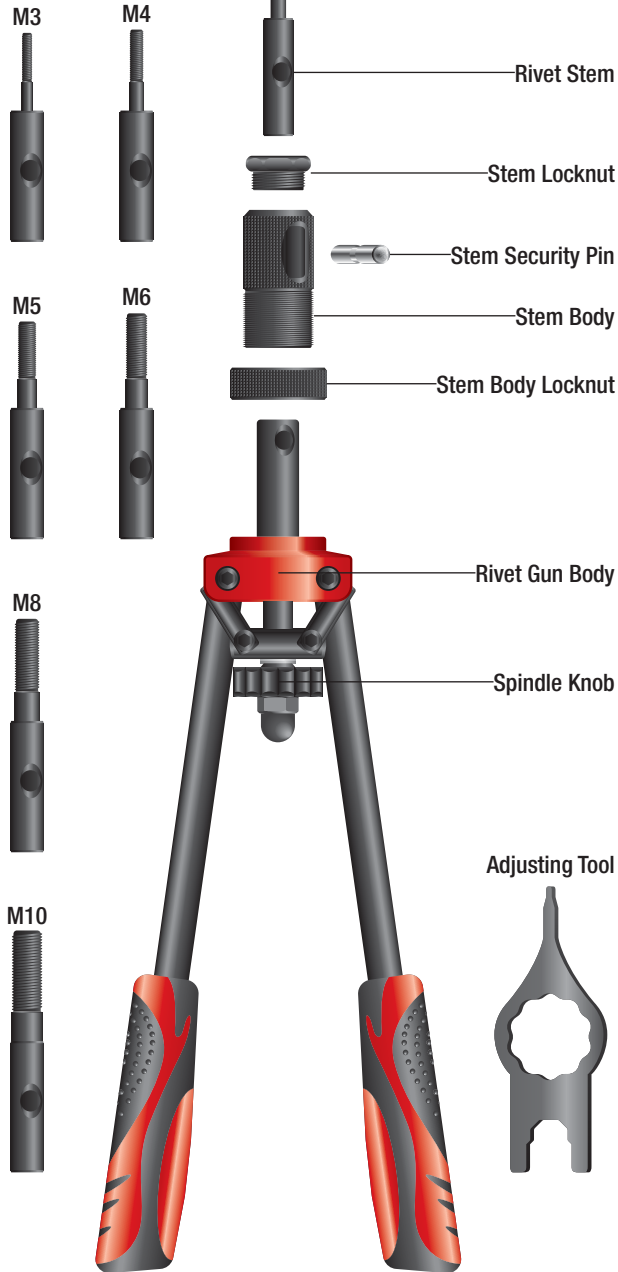


HANSA

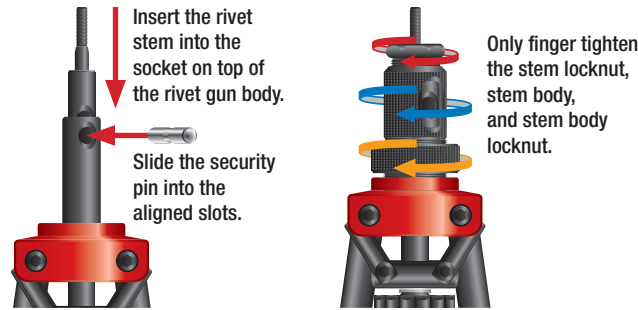
Rivet Nut Gun User Manual

Part No. H2033-2



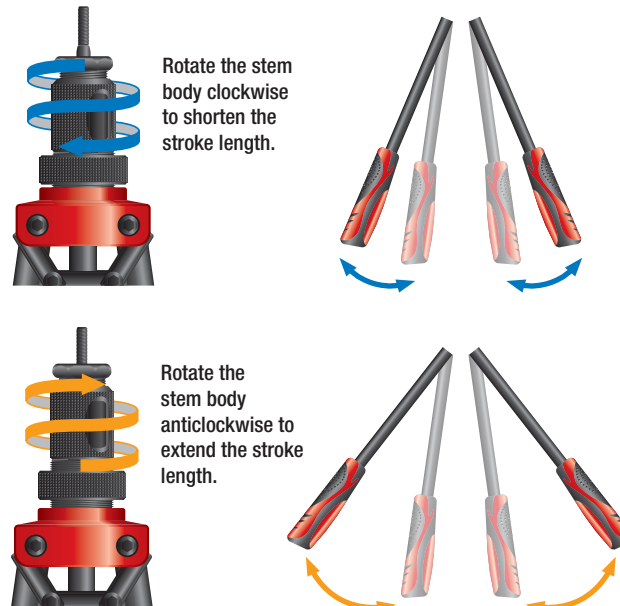
Adjustment for Operation

1. Install The Correct Stem Size For Application



2. Stroke Adjustment

Rotating the stem body to adjust the stroke length. Adjust accordingly to suit the application.



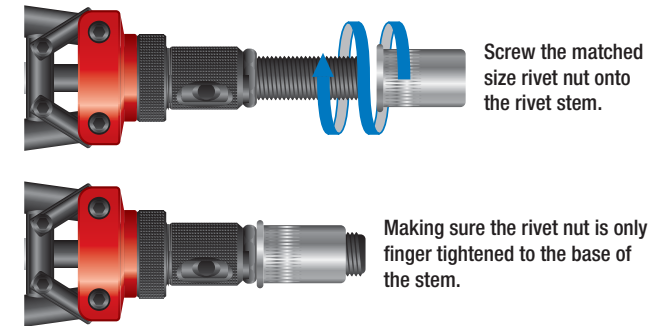
3. Tighten The Stem Body Locknut

Once the stroke length has been decided, tighten up the stem locknut and stem body locknut for a stable and firm operation.



Instruction of Operation

1. Choose The Correct Size Of The Rivet Nut



WARNING: DO NOT USE STAINLESS STEEL RIVET NUTS ON THIS TOOL.

2. Installation Of The Rivet Nut



Distributed By
Champion
FASTENERS

205 Arden St. North Melbourne VIC 3051
03 9325 9090
www.championparts.com.au
sales@championparts.com.au