

# KR PRESSURITE™ GREASE GUN



## INSTRUCTION MANUAL

### INTRODUCTION

Thank you for purchasing a Macnaught KR PRESSURITE Grease gun. The KR PRESSURITE grease gun has been designed for use with the Macnaught model K7 Mini-Lube and K4 Super-Lube Manual Greasing

Please read and retain this instruction manual to assist you in the operation and maintenance of this quality product.

### GENERAL INFORMATION

This manual assists you in operating and maintaining your new KR PRESSURITE grease gun. The information contained in this instruction manual will help you ensure many years of dependable performance and trouble free operation.

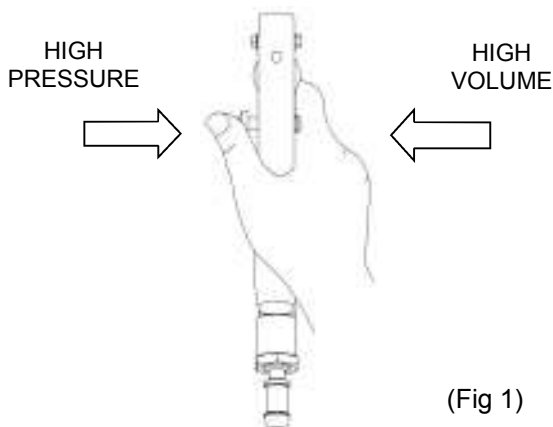
Please take a few moments to read through this manual before operating your KR grease gun. If you experience problems with the product, refer to the Maintenance and Trouble Shooting sections of this manual. If you require any further assistance please contact your local Macnaught distributor or Macnaught.

### DESCRIPTION

The KR PRESSURITE grease gun is a High Pressure / High Volume grease gun. When set on the high pressure setting you can reach greasing pressures up to 10,000psi (69 MPa).

The KR PRESSURITE gun is normally operated on the HI-VOLUME switch position. Should high pressure be required to clear a blocked or seized grease nipple, simply push the switch on the gun to the HI-PRESSURE position.

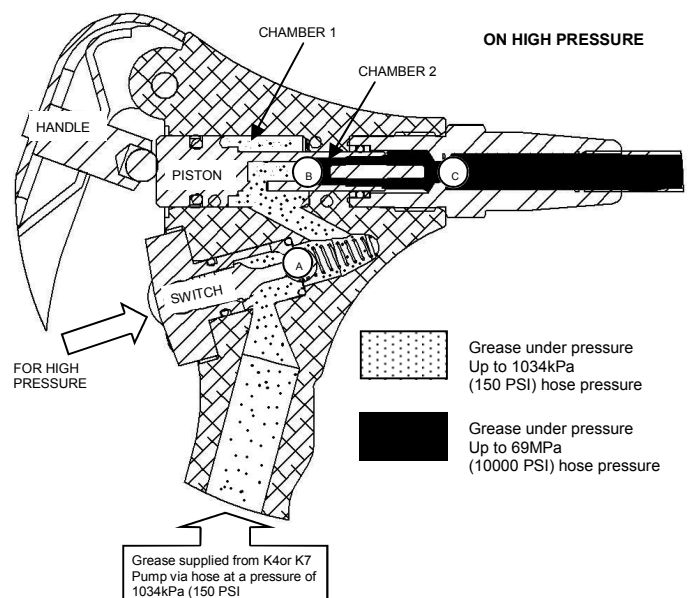
**Note:** To select either high pressure or high volume, refer to Fig 1.



### KR PRESSURITE GUN FEATURES

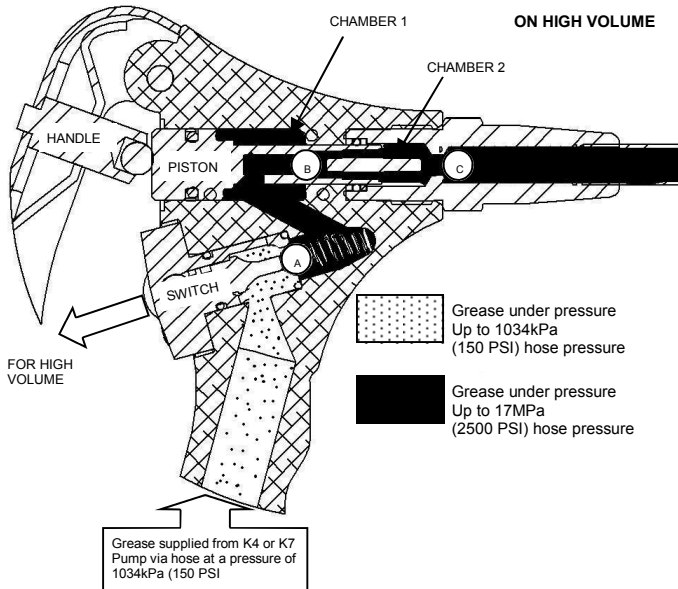
#### Operation on the High Pressure Setting

- 1) The switch is pushed forward and lifts ball 'A' off its seat.
- 2) As the piston is pushed forward by the handle, the grease in chamber 1 is pushed back past ball 'A' into the supply hose.
- 3) The grease in chamber 2 (small volume) is pressurised up to 69MPa (10,000 psi). This pressure seats ball B and lifts ball C, then forces grease through to the equipment being greased.



## Operation on the High Volume Setting

- 1) The switch is withdrawn allowing ball 'A' to seat.
- 2) The piston is pushed forward by the handle. As ball 'A' is seated, grease cannot return back into the hose. Therefore both volumes of grease in chambers 1 and 2 are combined (high volume) and pressurised for delivery to the equipment requiring greasing.
- 3) During the operation balls 'B' and 'C' are forced off their seats by both volumes of grease passing.



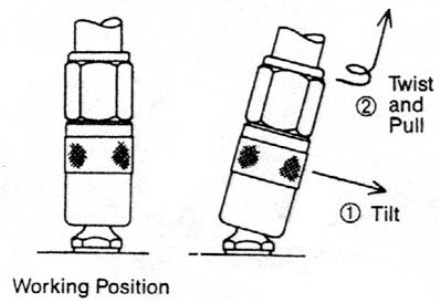
## GENERAL MAINTENANCE

When the KR gun has been serviced and the trouble is found to have been caused by dirt in the valves, the pump unit should also be cleaned out thoroughly to eliminate the dirt at its source.

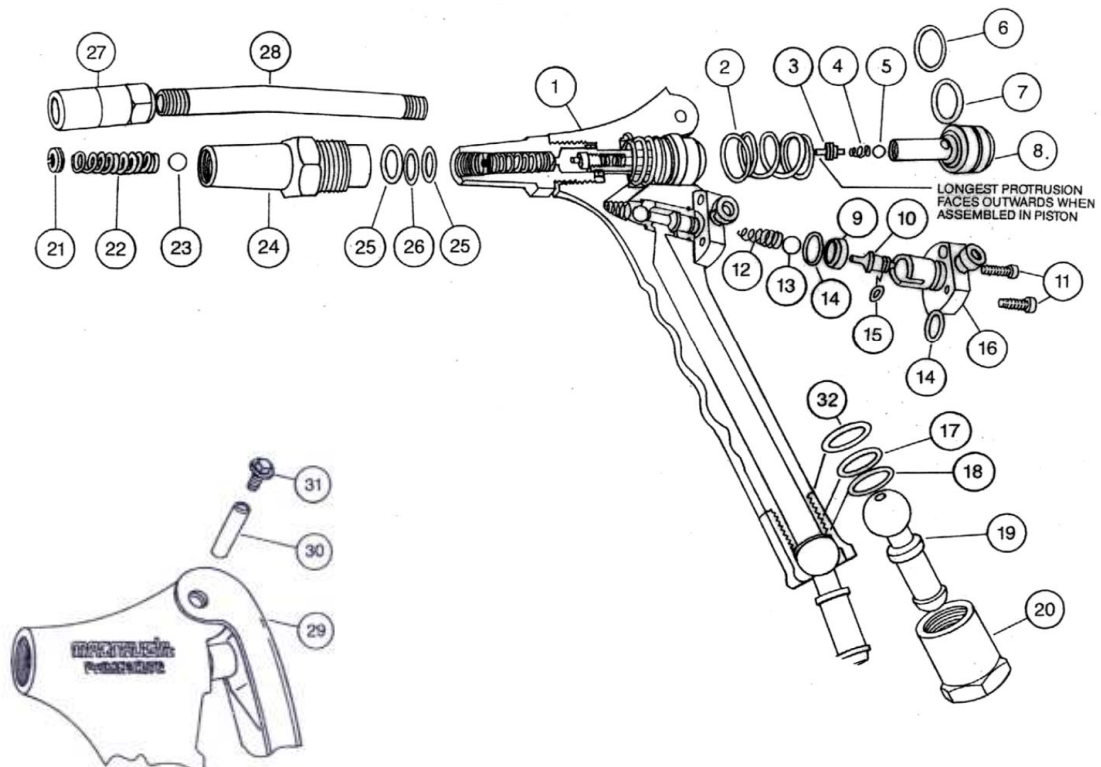
Dirt and foreign matter (lint, etc.) can seriously affect the operation of this unit.

Dismantling and reassembly of this unit should only be attempted in clean conditions.

## THE CORRECT METHOD FOR REMOVING THE KY COUPLER FROM A GREASE NIPPLE



## KR GUN PARTS DIAGRAM



## KR GUN PARTS LIST

|      |         | Order for replacement          |                           |                             |                                  |
|------|---------|--------------------------------|---------------------------|-----------------------------|----------------------------------|
| Item | No. off | New part/set                   | KIT. REF                  | DESCRIPTION                 |                                  |
|      |         | KR-1K (Kit A)<br>KR-2K (Kit B) | (A)                       | OVERHAUL KIT                |                                  |
|      |         |                                | (B)                       | PISTON KIT                  |                                  |
|      |         | N/A - new gun required         |                           | Gun Body                    |                                  |
| 1    | 1       |                                | A & B                     | Piston spring               |                                  |
| 2    | 1       |                                | A & B                     | Valve Stem (Piston)         |                                  |
| 3    | 1       |                                | A & B                     | Spring, Piston Check        |                                  |
| 4    | 1       |                                | A & B                     | 7/32" Ball. Piston          |                                  |
| 5    | 1       |                                | A & B                     | Glyde Ring                  |                                  |
| 6    | 1       |                                | A & B                     | Glyd Ring O'ring (BS111)    |                                  |
| 7    | 1       |                                | A & B                     | Piston                      |                                  |
| 8    | 1       |                                | A                         | Valve Seat                  |                                  |
| 9    | 1       |                                |                           | Operating Plunger Control   |                                  |
| 10   | 1       |                                |                           | Cap Socket 1/2"X3/16" w hit |                                  |
| 11   | 2       |                                |                           |                             |                                  |
| 12   | 1       |                                | KR12s                     | A                           | Spring, (inlet check)            |
| 13   | 1       |                                |                           | A                           | 5/16" Ball Inlet                 |
| 14   | 2       |                                |                           | A                           | O' ring, Seal Body (BS013)       |
| 15   | 1       |                                |                           | A                           | O' ring. Plunger Control (BS008) |
| 16   | 1       |                                |                           |                             | Control Body Assy                |
| 17   | 1       |                                |                           | A                           | Washer, Hose Adaptor             |
| 18   | 1       |                                |                           | A                           | O' ring, Hose Adaptor (BS113)    |
| 19   | 1       |                                |                           |                             | Ball End, Hose Adaptor           |
| 20   | 1       |                                |                           |                             | Ball. Socket Retainer            |
| 21   | 1       |                                |                           | A                           | Keeper Screw (outlet)            |
| 22   | 1       |                                | A                         | Spring (Outlet)             |                                  |
| 23   | 1       |                                | A                         | 1/4" Ball (outlet)          |                                  |
| 24   | 1       |                                | Outlet Body               |                             |                                  |
| 25   | 2       | A                              | Teflon Back Up Washer     |                             |                                  |
| 26   | 1       | A                              | O'ring. Piston (BS012)    |                             |                                  |
| 27   | 1       | KY                             | Coupler                   |                             |                                  |
| 28   | 1       | KH23s                          | Extension Tube            |                             |                                  |
| 29   | 1       | N/A - new gun required         | Handle                    |                             |                                  |
| 30   | 1       |                                | A & B Handle pin          |                             |                                  |
| 31   | 2       |                                | A & B Drive Screw         |                             |                                  |
| 32   | 1       |                                | A Retainer O'ring (BS017) |                             |                                  |

## TROUBLE SHOOTING GUIDE

| TROUBLE   | CAUSE   | REMEDY  |
|---|---|---|
| A) Coupler Leaks  | A) Dirt under the seat of the outlet Ball (23) <b>Note:</b> There is nothing wrong with the coupler itself. | <p>A) Change to high volume and strike the handle sharply. If it still leaks, remove the extension tube (28), spring keeper screw (21), spring (22) and ball (23).</p> <p>Clean the seat and replace the ball, spring and spring keeper screw (part way). Prime the pump, and screw in the spring keeper screw until the grease stops leaking. Then screw in an extra 2 full turns. Reassemble extension tube (28)</p> <p><b>Note:</b> Too many turns makes the gun hard to operate, and too few turns allows the gun to leak. If the coupler still leaks replace the complete outlet body assembly.</p> <p>When refitting the outlet body (24) hold the handle (29) in the closed position. This enables the back-up washers and o'ring seals to enter squarely onto the piston.</p> |
|   | B) The valve stem (3) has worked loose and is holding the outlet ball (23) off its seat                     | B) Remove the handle pin (30), and handle (29). Remove piston (8), re-tighten valve stem (3) or replace the complete piston assembly  |
| B) Gun leaks at the back end of the piston.                 | Glyd ring worn  | Remove the handle pin (30) and handle (29). Remove the old piston and replace with a new piston assembly.   |
| C) Gun fails to deliver grease on the high pressure setting | A) Dirt under the delivery ball (5) or damaged ball seat in the piston (8)                                  | A) Change over to the high volume setting and strike the handle hard to shift dirt off the seat. If there is no improvement, replace the piston assembly.   |
|   | B) Seals (25, 26) are worn  | B) Replace seals (25, 26) in the outlet body.   |
|   | C) Valve stem (3) has become Loose from the piston (8)  | C) Replace piston assembly  |

## TROUBLE SHOOTING GUIDE (CONTINUED)

| TROUBLE   | CAUSE   | REMEDY   |
|---|---|--|
| D) Gun fails to deliver grease on the high volume setting.                  | A) Dirt on the inlet valve seat (9)<br>Note: This fault will decrease volume. | A) Remove the control body (16), tap out the valve seat (9), o'ring (14), ball (13) and spring (12). Clean parts and replace in the correct order. |
|   | B) Operating plunger control (10) sticking in body (16).                      | B) Replace the control body assembly.  |
| E) The control push rod in the control body leaks.                          | O'ring (15) damaged or worn   | Remove the control body and replace worn or damaged parts.   |
| F) The gun leaks at the swivel joint.                                       | Worn seals (18,32).   | Replace worn or damaged swivel seals   |
| G) The gun, when on the high volume setting is too slow or hard to operate. | A) Springs (2 or 4) may have collapsed and is blocking the flow of grease.    | A) Fit KR-1K overhaul kit  |
|   | B) Grade of grease is too heavy.  | B) Change grease to NLGI No 2 grease or lighter.   |
|   | C) Too much compression on the outlet spring (22).                            | C) Reset the spring keeper screw (Refer to A - a) of the trouble shooting guide) or replace the outlet body assembly.                              |

## TECHNICAL SPECIFICATIONS

The KR Grease gun is suitable for use with Macnaught models K4 and K7 Lubrication systems.

The KR Grease Gun is recommended for use with greases up to and including NLGI No 2 consistency.

The KR Grease Gun will deliver greasing pressures up to 10,000 psi (69 MPa) on the high pressure setting



Macnaught Pty Limited  
ABN 66 000 075 785

41-49 Henderson Street  
Turlella NSW 2205 Sydney Australia  
Postal Address PO Box 90  
Arncliffe NSW 2205 Sydney Australia

T: +61 2 9567 0401  
F: +61 2 9597 7773  
W: www.macnaught.com.au

### Note:

This product should be disposed of according to all applicable local and national government environment regulations and guidelines.



**For Warranty Terms and Conditions see [macnaught.com.au](http://macnaught.com.au)**  
**For a list of Australian Service Centres see [macnaught.com.au](http://macnaught.com.au)**