

MX NCC Burrs & Sets

Economic burrs with good stock removal



VERTRAU BLAU
Trust In The Blue

- Economic machining of a wide range of materials
- Good stock removal performance and tool life
- Wide product range for general purpose use

MX NCC Burrs & Sets

Economic burrs with good stock removal



The PFERD COMBICUT tungsten carbide burrs with MX NCC cut have been specially developed for general purpose use. They are characterized by good stock removal performance in use on a wide variety of materials. The broad product range provides economic solutions for almost every application.

Advantages:

- Application centred product range with commonly used shapes and dimensions.
- Good stock removal performance and tool life.
- Economic machining of the most diverse materials.

Materials that can be worked:

- Steel, cast steel
- Stainless steel (INOX)
- Non-ferrous metals
- Cast iron
- Plastics and other materials

Applications:

- Levelling
- Deburring
- Machining contours
- Machining edges (chamfering, rounding)

Recommendations for use:

- Use at the highest possible rotational speeds. Please refer to our rotational speed and cutting speed recommendations.
- The burr contact surface to the workpiece can be up to a maximum of 30 % of the entire circumference.

MX NCC cut



Matching tool drives:

- Flexible shaft drive
- Straight grinder
- Robot
- Machine tools

Recommended rotational speed range [RPM]

To determine the recommended cutting speed range [m/min], please proceed as follows:

❶ Select the material group to be machined

❷ Select the cut

❸ Establish the cutting speed range

❹ Select the required burr diameter

❺ The cutting speed range and the burr diameter determine the recommended rotational speed range

❶ Material group			Application	❷ Cut	❸ Cutting speed
Steel, cast steel	Steels up to 1,200 N/mm ² (< 38 HRC)	Construction steels, carbon steels, tool steels, non-alloyed steels, casehardened steels, cast steel	General use	MX NCC	450–600 m/min
	Hardened, heat-treated steels over 1,200 N/mm ² (> 38 HRC)	Tool steels, tempering steels, alloyed steels, cast steel			250–350 m/min
Stainless steel (INOX)	Rust and acid-resistant steels	Austenitic and ferritic stainless steels	General use	MX NCC	250–350 m/min
Non-ferrous metals	Hard non-ferrous metals	Bronze, titanium/titanium alloys, hard aluminium alloys (high Si content)	General use	MX NCC	250–350 m/min
	High-temperature resistant materials	Nickel-based and cobalt-based alloys (engine and turbine construction)			250–450 m/min
Cast iron	Grey cast iron, white cast iron	Cast iron with flake graphite EN-GJL (GG), with nodular graphite/nodular cast iron EN-GJS (GGG), white annealed cast iron EN-GJMW (GTW), black cast iron EN-GJMB (GTS)	General use	MX NCC	450–600 m/min
Plastics & other materials	Fibre-reinforced plastics (GRP/CRP), thermoplastics, hard rubber, wood		General use	MX NCC	450–900 m/min

❹ Burr dia. [mm]	❺ Cutting speeds [m/min]				
	250	350	500	600	900
	Rotational speed [RPM]				
2	40,000	56,000	72,000	95,000	143,000
3	27,000	37,000	48,000	64,000	95,000
4	20,000	28,000	36,000	48,000	72,000
6	13,000	19,000	24,000	32,000	48,000
8	10,000	14,000	18,000	24,000	36,000
10	8,000	11,000	14,000	19,000	29,000
12	7,000	9,000	12,000	16,000	24,000
16	5,000	7,000	9,000	12,000	18,000

PFERDVALUE



MX NCC Burrs & Sets

Economic burrs with good stock removal



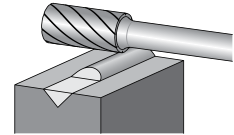
Size Description US Designation Article Number Barcode 

ZYA Cylindrical

Cylindrical burr according to DIN 8032

1/4" Shank (inch)

1/4 x 5/8	ZYA 6.35x15.9x6.35 MX NCC	SA-1	26007209	4007220138960	1
5/16 x 3/4	ZYA 7.9x19x6.35 MX NCC	SA-2	26007210	4007220138991	1
3/8 x 3/4	ZYA 9.5x19x6.35 MX NCC	SA-3	26007211	4007220139004	1
1/2 x 1	ZYA 12.25x6.35 MX NCC	SA-5	26006773	4007220020418	1
5/8 x 1	NI ZYA 16.25x6.35 MX NCC	SA-6	26007660	4007220413463	1



ZYA

6mm Shank (mm)

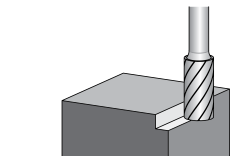
6 x 16	NI ZYA 0616/6 MX NCC		21301612	4007220609149	1
8 x 20	NI ZYA 0820/6 MX NCC		21301712	4007220935804	1
10 x 20	NI ZYA 1020/6 MX NCC		21301812	4007220609156	1
12 x 25	NI ZYA 1225/6 MX NCC		21301912	4007220609170	1
16 x 25	NI ZYA 1625/6 MX NCC		21302012	4007220609187	1

ZYAS Cylindrical End Cut

Cylindrical burr according to DIN 8032 with circumferential and end cut.

1/4" Shank (inch)

3/8 x 3/4	NI ZYAS 9.5x19x6.35 MX NCC	SB-3	26007649	4007220412039	1
1/2 x 1	NI ZYAS 12.7x25.4x6.35 MX NCC	SB-5	26007650	4007220412046	1



ZYAS

6mm Shank (mm)

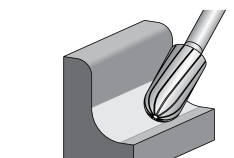
6 x 16	NI ZYAS 0616/6 MX NCC		21300612	4007220609118	1
10 x 20	NI ZYAS 1020/6 MX NCC		21300812	4007220625729	1
12 x 25	NI ZYAS 1225/6 MX NCC		21300912	4007220609132	1

WRC Cylindrical Radius End

Cylindrical burr with radius end according to DIN 8032. Combination of cylindrical and ball-shaped geometries.

1/4" Shank (inch)

1/4 x 5/8	WRC 6.35x15.9x6.35 MX NCC	SC-1	26007212	4007220139011	1
5/16 x 3/4	WRC 0820/6.35 MX NCC	SC-2	26006766	4007220019528	1
3/8 x 3/4	WRC 1020/6.35 MX NCC	SC-3	26006772	4007220020401	1
1/2 x 1	WRC 1225/6.35 MX NCC	SC-5	26006770	4007220020388	1
5/8 x 1	WRC 15.9x25.4x6.35 MX NCC	SC-6	26007213	4007220139028	1



WRC

6mm Shank (mm)

6 x 16	NI WRC 0616/6 MX NCC		21305012	4007220609224	1
8 x 20	NI WRC 0820/6 MX NCC		21305112	4007220625736	1
10 x 20	NI WRC 1020/6 MX NCC		21305212	4007220609248	1
12 x 25	NI WRC 1225/6 MX NCC		21305312	4007220609255	1
16 x 25	NI WRC 1625/6 MX NCC		21305412	4007220609279	1

NI New to the range



MX NCC Burrs & Sets

Economic burrs with good stock removal



Size Description US Designation Article Number Barcode 

KUD Ball

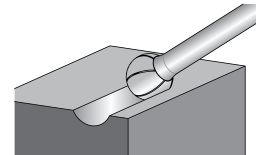
Ball-shaped burr according to DIN 8032.

1/4" Shank (inch)

1/4 x 3/16	NI	KUD 6.35x4.8x6.35 MX NCC	SD-1	26007651	4007220412053	1
3/8 x 5/16		KUD 9.5x7.9x6.35 MX NCC	SD-3	26007214	4007220139035	1
1/2 x 7/16	NI	KUD 12.7x11.1x6.35 MX NCC	SD-5	26007652	4007220412060	1
5/8 x 9/16	NI	KUD 16x14x6.35 MX NCC	SD-6	26007653	4007220412077	1

6mm Shank (mm)

6 x 5	NI	KUD 0605/6 MX NCC		21312512	4007220609286	1
10 x 9	NI	KUD 1009/6 MX NCC		21312712	4007220609293	1
12 x 10	NI	KUD 1210/6 MX NCC		21312812	4007220609316	1
16 x 14	NI	KUD 1614/6 MX NCC		21312912	4007220609323	1



KUD

TRE Oval

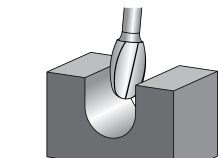
Oval burr according to DIN 8032.

1/4" Shank (inch)

3/8 x 5/8		TRE 9.5x15.9x6.35 MX NCC	SE-3	26007215	4007220139042	1
1/2 x 7/8		TRE 12.7x22.2x6.35 MX NCC	SE-5	26007216	4007220139066	1
5/8 x 1	NI	TRE 15.9x25.4x6.35 MX NCC	SE-6	26007654	4007220412084	1

6mm Shank (mm)

10 x 16	NI	TRE 1016/6 MX NCC		21335112	4007220609125	1
12 x 20	NI	TRE 1220/6 MX NCC		21335212	4007220609163	1
16 x 25	NI	TRE 1625/6 MX NCC		21335313	4007220609200	1



TRE

RBF Tree Radius End

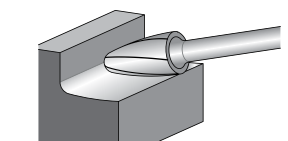
Tree-shaped burr with radius end according to DIN 8032.

1/4" Shank (inch)

1/4 x 5/8		RBF 6.35x15.9x6.35 MX NCC	SF-1	26007217	4007220139080	1
3/8 x 3/4		RBF 9.5x19x6.35 MX NCC	SF-3	26007218	4007220139097	1
1/2 x 1		RBF 12.7x25.4x6.35 MX NCC	SF-5	26006769	4007220020371	1
5/8 x 1	NI	RBF 15.9x25.4x6.35 MX NCC	SF-6	26007200	4007220137437	1

6mm Shank (mm)

6 x 18	NI	RBF 0618/6 MX NCC		21317312	4007220609361	1
10 x 20	NI	RBF 1020/6 MX NCC		21317712	4007220609385	1
12 x 25	NI	RBF 1225/6 MX NCC		21317812	4007220609392	1
16 x 25	NI	RBF 1625/6 MX NCC		21317912	4007220609408	1



RBF

NI New to the range



MX NCC Burrs & Sets

Economic burrs with good stock removal



Size Description US Designation Article Number Barcode 

SPG Pointed Tree

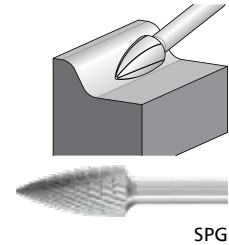
Pointed tree-shaped burr according to DIN 8032, flattened tip.

1/4" Shank (inch)

1/4 x 5/8	NI	SPG 6.35x15.9x6.35 MX NCC	SG-1	26007655	4007220412091	1
3/8 x 3/4		SPG 9.5x19x6.35 MX NCC	SG-3	26007219	4007220139103	1
1/2 x 1		SPG 12.25/6.35 MX NCC	SG-5	26006768	4007220020364	1
5/8 x 1	NI	SPG 15.9x25.4x6.35 MX NCC	SG-6	26007656	4007220412107	1

6mm Shank (mm)

6 x 18	NI	SPG 0618/6 MX NCC		21322512	4007220609422	1
10 x 20	NI	SPG 1020/6 MX NCC		21322612	4007220609439	1
12 x 25	NI	SPG 1225/6 MX NCC		21322712	4007220609453	1
16 x 25	NI	SPG 1625/6 MX NCC		21322812	4007220609484	1



B Flame

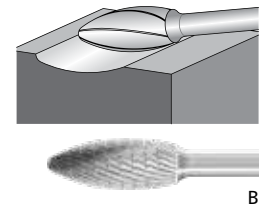
Flame-shaped burr according to ISO 7755/8.

1/4" Shank (inch)

5/16 x 3/4		B 7.9x19x6.35 MX NCC	SH-2	26007220	4007220139110	1
1/2 x 1 1/4		B 1230/6.35 MX NCC	SH-5	26006771	4007220020395	1
5/8 x 1 7/16	NI	B 15.9x36.5x6.35 MX NCC	SH-6	26007657	4007220412114	1

6mm Shank (mm)

12 x 30	NI	B 1230/6 MX NCC		21303312	4007220609194	1
16 x 35	NI	B 1635/6 MX NCC		21303412	4007220609217	1



KEL Cone Radius End

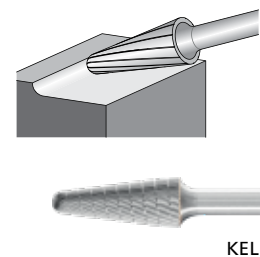
Conical burr with radius end according to DIN 8032.

1/4" Shank (inch)

3/8 x 3/4		KEL 1020/6.35 MX NCC	SL-3	26006774	4007220020425	1
1/2 x 1 1/8		KEL 1230/6.35 MX NCC	SL-5	26006767	4007220020357	1
5/8 x 1 3/8	NI	KEL 16x35x6.35 MX NCC	SL-6	26007658	4007220412121	1

6mm Shank (mm)

10 x 20	NI	KEL 1020/6 MX NCC		21325012	4007220609491	1
12 x 30	NI	KEL 1230/6 MX NCC		21325212	4007220609507	1
16 x 35	NI	KEL 1635/6 MX NCC		21325312	4007220609514	1




NI New to the range

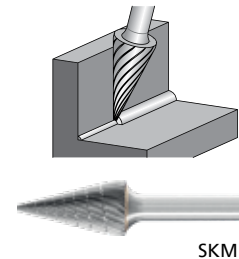


MX NCC Burrs & Sets

Economic burrs with good stock removal



Size	Description	US Designation	Article Number	Barcode	
SKM Pointed Cone					
Conical pointed burr according to DIN 8032, flattened tip.					
1/4" Shank (inch)					
1/4 x 3/4	SKM 6.35x19x6.35 MX NCC	SM-1	26007221	4007220139127	1
3/8 x 3/4	N! SKM 9.5x19x6.35 MX NCC	SM-3	26007659	4007220412138	1
1/2 x 1	SKM 12.7x25.4x6.35 MX NCC	SM-5	26007222	4007220139141	1
6mm Shank (mm)					
6 x 18	N! SKM 0618/6 MX NCC		21315012	4007220609330	1
10 x 20	N! SKM 1020/6 MX NCC		21315112	4007220609347	1
12 x 25	N! SKM 1225/6 MX NCC		21315212	4007220609354	1



SKM

MX NCC Burr Sets

1/4" Shank (inch)

4 PC MX NCC Burr Set	75609063	4007220156735	1
Contains: ZYA 6.35 x 15.9 x 6.35, WRC 6.35 x 15.9 x 6.35, RBF 12.7 x 25.4 x 6.35, SPG 9.5 x 19 x 6.35			
8 PC MX NCC Burr Set	75609064	4007220156742	1
Contains: ZYA 6.35 x 15.9 x 6.35, WRC 6.35 x 15.9 x 6.35, WRC 9.5 x 19 x 6.35, WRC 12.7 x 25.4 x 6.35, RBF 12.7 x 25.4 x 6.35, KEL 9.9 x 30.3 x 6.35, SKM 6.35 x 19 x 6.35, KUD 9.5 x 7.9 x 6.35			



N! New to the range

Safety Recommendations



Wear eye protection!



Wear hearing protection!



Wear a dust mask!



Wear gloves!



Follow the safety instructions!



Do not use if damaged!

PFERD HEAD OFFICE
1-3 Conifer Crescent
Dingley, VIC 3172
Phone: (03) 9565 3200

PFERD New South Wales
43 Bentley Street
Wetherill Park, NSW 2164
Phone: (02) 9725 1833
Phone: (02) 9725 1873

PFERD Queensland
2/20 Thomas Hanlon Court
Yatala, QLD 4207
Phone: (07) 3323 1800

PFERD South Australia
4/36-38 Tikalara Street
Regency Park, SA 5010
Phone: (08) 8340 1221

PFERD Western Australia
Unit 2/13 Canvale Road
Canning Vale, WA 6155
Phone: (08) 9455 6055

PFERD Tasmania
Alltrade Agencies
34 Trevor Street
Ulverstone, TAS 7315
Phone: 0409 371 225

PFERD Northern Territory
NTIA - NT Industrial Agencies
Phone: 0455 555 109

customerservice@pferd.com.au
1300 073 373
www.pferd.com.au

Follow us on social media

