

# ALLROUND Burrs

One cut, all materials



**NEW**



**VERTRAU BLAU**  
Trust In The Blue

- Innovative ALLROUND cut
- Stock removal rate is up to 30% higher than burrs with a conventional cross cut
- Reduced vibration & less noise
- Significant time savings & high economic value

# ALLROUND Burrs

One cut, all materials



**NEW**



With the innovative ALLROUND cut, PFERD has developed unique burrs for versatile use on key materials such as steel and cast steel, stainless steel (INOX), non-ferrous metals and cast iron. The ALLROUND cut offers all the benefits of the tried-and-tested 3 PLUS cut, but its stock removal rate is up to 30 % higher for steel. It enables comfortable working with reduced vibration and less noise. They also offer significant time savings and a high economic value. PFERD also offers tungsten carbide burrs with ALLROUND cut with a high-quality HICOAT coating.

## Advantages:

- Reduced wear on the tool drive due to impact-free work without chatter marks, thanks to the high concentricity.

## Materials that can be worked:

- Steel, cast steel
- Stainless steel (INOX)
- Non-ferrous metals
- Cast iron

## Applications:

- Milling out
- Levelling
- Deburring
- Cutting out holes
- Surface work
- Work on weld seams

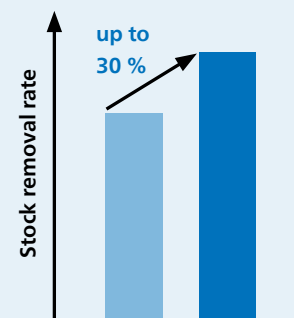
## Recommendations for use:

- If possible, use the tools on powerful drives with elastically mounted spindles to avoid vibration.
- For the cost-effective use of burrs, work with higher rotational/cutting speeds. Power recommendation for tool drives: from 300 watts.
- Please observe the rotational speed recommendations.

## Matching tool drives:

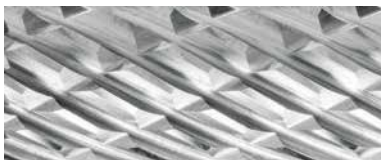
- Flexible shaft drive
- Straight grinder
- Robot
- Machine tools

## Performance values for applications on steel



- Conventional burrs with cross cut
- Tungsten carbide burrs, ALLROUND cut

## ALLROUND cut



## Advantages:

- Significantly better stock removal rate than burrs with a conventional cross cut.
- Saves money and time through its very high stock removal rate on key materials.
- Comfortable working with reduced vibration and less noise.



# ALLROUND Burrs

One cut, all materials



## Recommended rotational speed range [RPM]

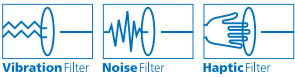
To determine the recommended cutting speed range [m/min], please proceed as follows:

- ❶ Select the material group to be machined
- ❷ Select the cut
- ❸ Establish the cutting speed range
- ❹ Select the required burr diameter

- ❺ The cutting speed range and the burr diameter determine the recommended rotational speed range

❶ Material group		Application	❷ Cut	❸ Cutting speed
Steel, cast steel	Steels up to 1,200 N/mm <sup>2</sup> (< 38 HRC)	Construction steels, carbon steels, tool steels, non-alloyed steels, casehardened steels, cast steel, alloyed steels	ALLROUND	450–750 m/min
	Hardened, heat-treated steels over 1,200 N/mm <sup>2</sup> (> 38 HRC)	Tool steels, tempering steels, alloyed steels, cast steel	ALLROUND	250–450 m/min
Stainless steel (INOX)	Rust and acid-resistant steels	Austenitic and ferritic stainless steels	ALLROUND	450–600 m/min
Non-ferrous metals	Soft non-ferrous metals	Brass, copper, zinc	ALLROUND	450–750 m/min
	Hard non-ferrous metals	Bronze, titanium/titanium alloys, hard aluminium alloys (high Si content)	ALLROUND	450–600 m/min
Cast iron	Grey cast iron, white cast iron	Cast iron with flake graphite EN-GJL (GG), with nodular graphite/nodular cast iron EN-GJS (GGG), white annealed cast iron EN-GJMW (GTW), black cast iron EN-GJMB (GTS)	ALLROUND	450–900 m/min

## PFERDVALUE



❹ Burr dia. [mm]	❺ Cutting speeds [m/min]				
	250	450	600	750	900
	Rotational speed [RPM]				
3	27,000	48,000	64,000	80,000	95,000
6	13,000	24,000	32,000	40,000	48,000
8	10,000	18,000	24,000	30,000	36,000
10	8,000	14,000	19,000	24,000	29,000
12	7,000	12,000	16,000	20,000	24,000
16	5,000	9,000	12,000	15,000	18,000



# ALLROUND Burrs

One cut, all materials



Size Description US designation Article Number Barcode 

## ZYAS Cylindrical End Cut

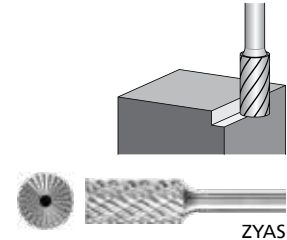
Cylindrical burr according to DIN 8032 with circumferential and end cut.

### 1/4" Shank (inch)

1/4 x 5/8	ZYAS 6.35x15.9x6.35 ALLROUND	SB-1	21728029	4007220141076	1
3/8 x 3/4	ZYAS 9.5x19x6.35 ALLROUND	SB-3	21728019	4007220140956	1
1/2 x 1	ZYAS 12.7x25.4x6.35 ALLROUND	SB-5	21728010	4007220140741	1

### 6mm Shank (mm)

6 x 16	ZYAS 0616/6 ALLROUND		21001000	4007220092866	1
10 x 20	ZYAS 1020/6 ALLROUND		21001002	4007220092903	1
12 x 25	ZYAS 1225/6 ALLROUND		21001003	4007220092941	1



ZYAS

## WRC Cylindrical Radius End

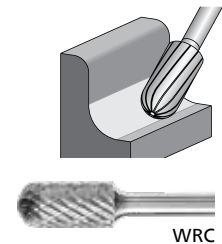
Cylindrical burr with radius end according to DIN 8032. Combination of cylindrical and ball-shaped geometries.

### 1/4" Shank (inch)

1/4 x 5/8	WRC 6.35x15.9x6.35 ALLROUND	SC-1	21728024	4007220141014	1
3/8 x 3/4	WRC 9.5x19x6.35 ALLROUND	SC-3	21728006	4007220140673	1
1/2 x 1	WRC 12.7x25.4x6.35 ALLROUND	SC-5	21728001	4007220140628	1

### 6mm Shank (mm)

6 x 16	WRC 0616/6 ALLROUND		21001010	4007220093153	1
10 x 20	WRC 1020/6 ALLROUND		21001012	4007220093191	1
12 x 25	WRC 1225/6 ALLROUND		21001013	4007220093221	1



WRC

## KUD Ball

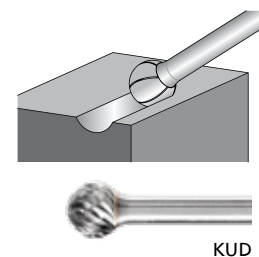
Ball-shaped burr according to DIN 8032.

### 1/4" Shank (inch)

1/4 x 3/16	KUD 6.35x4.8x6.35 ALLROUND	SD-1	21728034	4007220141168	1
3/8 x 5/16	KUD 9.5x7.9x6.35 ALLROUND	SD-3	21728021	4007220140987	1
1/2 x 7/16	KUD 12.7x11.1x6.35 ALLROUND	SD-5	21728028	4007220141069	1

### 6mm Shank (mm)

6 x 5	KUD 0605/6 ALLROUND		21001005	4007220093009	1
10 x 9	KUD 1009/6 ALLROUND		21001007	4007220093108	1
12 x 10	KUD 1210/6 ALLROUND		21001008	4007220093115	1



KUD

## TRE Oval

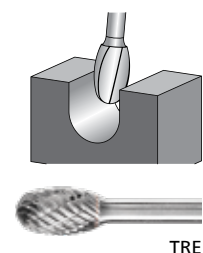
Oval burr according to DIN 8032.

### 1/4" Shank (inch)

1/2 x 7/8	TRE 12.7x22.2x6.35 ALLROUND	SE-5	21728025	4007220141021	1
-----------	-----------------------------	------	----------	---------------	---

### 6mm Shank (mm)

12 x 20	TRE 1220/6 ALLROUND		21001041	4007220093764	1
---------	---------------------	--	----------	---------------	---




TRE

# ALLROUND Burrs

One cut, all materials



Size Description US designation Article Number Barcode 

## RBF Tree Radius End

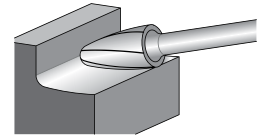
Tree-shaped burr with radius end according to DIN 8032.

### 1/4" Shank (inch)

1/4 x 5/8	RBF 6.35x15.9x6.35 ALLROUND	SF-1	21728012	4007220140758	1
3/8 x 3/4	RBF 9.5x19x6.35 ALLROUND	SF-3	21728007	4007220140710	1
1/2 x 1	RBF 12.7x25.4x6.35 ALLROUND	SF-5	21728000	4007220140611	1

### 6mm Shank (mm)

6 x 18	RBF 0618/6 ALLROUND		21001029	4007220093580	1
10 x 20	RBF 1020/6 ALLROUND		21001031	4007220093658	1
12 x 25	RBF 1225/6 ALLROUND		21001032	4007220093672	1



RBF

## SPG Pointed Tree

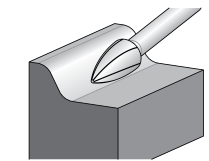
Pointed tree-shaped burr according to DIN 8032, flattened tip.

### 1/4" Shank (inch)

3/8 x 3/4	SPG 9.5x19x6.35 ALLROUND	SG-3	21728015	4007220140796	1
1/2 x 1	SPG 12.7x25.4x6.35 ALLROUND	SG-5	21728009	4007220140734	1

### 6mm Shank (mm)

10 x 20	SPG 1020/6 ALLROUND		21001021	4007220093382	1
12 x 25	SPG 1225/6 ALLROUND		21001022	4007220093399	1



SPG

## B Flame

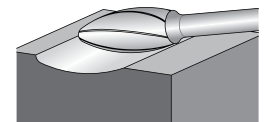
Flame-shaped burr according to ISO 7755/8.

### 1/4" Shank (inch)

1/2 x 1 1/4	B 12.7x31.7x6.35 ALLROUND	SH-5	21728004	4007220140659	1
-------------	---------------------------	------	----------	---------------	---

### 6mm Shank (mm)

12 x 30	B 1230/6 ALLROUND		21001017	4007220093306	1
---------	-------------------	--	----------	---------------	---



B

## KEL Cone Radius End

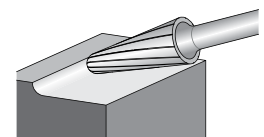
Conical burr with radius end according to DIN 8032.

### 1/4" Shank (inch)

3/8 x 1 3/16	KEL 9.9x30.3x6.35 ALLROUND	SL-3	21728003	4007220140642	1
1/2 x 1 1/8	KEL 12.7x28.6x6.35 ALLROUND	SL-5	21728014	4007220140789	1

### 6mm Shank (mm)

10 x 20	KEL 1020/6 ALLROUND		21001026	4007220093498	1
12 x 25	KEL 1225/6 ALLROUND		21001027	4007220093535	1



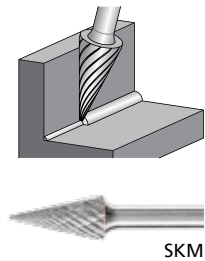
KEL

# ALLROUND Burrs

One cut, all materials



Size	Description	US designation	Article Number	Barcode	
<b>SKM Pointed Cone</b>					
Conical pointed burr according to DIN 8032, flattened tip.					
<b>1/4" Shank (inch)</b>					
1/4 x 1	SKM 6.35x25.4x6.35 ALLROUND	SM-1	21728036	4007220141212	1
1/2 x 1	SKM 12.7x25.4x6.35 ALLROUND	SM-5	21728016	4007220140802	1
<b>6mm Shank (mm)</b>					
6 x 18	SKM 0618/6 ALLROUND		21001034	4007220093696	1
12 x 25	SKM 1225/6 ALLROUND		21001037	4007220093726	1



SKM

### 3 Pieces ALLROUND Sets

Sets contain three versatile tungsten carbide burrs for use on key materials such as steel and cast steel, stainless steel (INOX), non-ferrous metals and cast iron in the most common shapes and dimensions. The sturdy plastic box protects the tools from dirt and damage.

<b>1/4" Shank (inch)</b>					
3 PIECES SET ALLROUND-1/4" HEAD			TBA		1
3 PIECES SET ALLROUND-1/2" HEAD			TBA		1
<b>6mm Shank (mm)</b>					
1406 - 3 PIECES SET ALLROUND-6mm HEAD			21901406	4007220226698	1
ZYAS 0616/6, WRC 0616/6, RBF 0618/6					
1414 - 3 PIECES SET ALLROUND-12mm HEAD			21901414	4007220226704	1
ZYAS 1225/6, WRC 1225/6, RBF 1225/6					



#### Safety Recommendations



Wear eye protection!



Wear hearing protection!



Wear a dust mask!



Wear gloves!



Follow the safety instructions!



Do not use if damaged!

**PFERD HEAD OFFICE**  
1-3 Conifer Crescent  
Dingley, VIC 3172  
Phone: (03) 9565 3200

**PFERD New South Wales**  
43 Bentley Street  
Wetherill Park, NSW 2164  
Phone: (02) 9725 1833  
Phone: (02) 9725 1873

**PFERD Queensland**  
2/20 Thomas Hanlon Court  
Yatala, QLD 4207  
Phone: (07) 3323 1800

**PFERD South Australia**  
4/36-38 Tikalara Street  
Regency Park, SA 5010  
Phone: (08) 8340 1221

**PFERD Western Australia**  
Unit 2/13 Canvale Road  
Canning Vale, WA 6155  
Phone: (08) 9455 6055

**PFERD Tasmania**  
Alltrade Agencies  
34 Trevor Street  
Ulverstone, TAS 7315  
Phone: 0409 371 225

**PFERD Northern Territory**  
NTIA - NT Industrial Agencies  
Phone: 0455 555 109

customerservice@pferd.com.au  
1300 073 373  
www.pferd.com.au

Follow us on social media

