

Onsite Checklist and Request for: Quotation ☐  
 Order ☐  
*Tick one*

Customer name/ Reference Number \_\_\_\_\_

Sales Representative \_\_\_\_\_

Contact Number \_\_\_\_\_

Date Quote Required by \_\_\_\_\_

Date Product required by: \_\_\_\_\_

Delivery Address: \_\_\_\_\_

### Stair Capping and Nosings

*Refer to reference page for appropriate codes*

Quantity	Length (A)	Depth (B)	Return (C)	Front Edge	Colour	Grade	Metal Backing	Fastening Method

### Ladder Covers

Quantity	Width (A)	Diameter (B)	Shape	Colour	Grade	Metal Backing	Fastening Method

### Safeplate

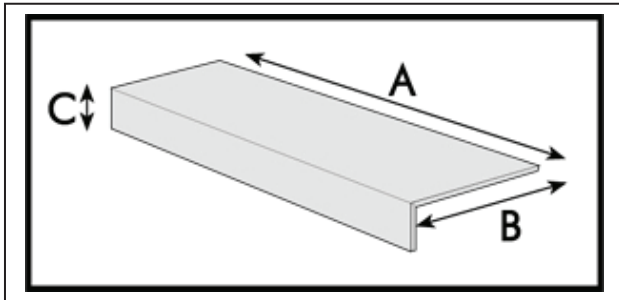
Quantity	Length	Depth	Colour	Grade	Metal Backing	Fastening Method	Notes

Fasteners Required? Yes / No (select one)

Installation Location \_\_\_\_\_

Additional Comments

### How to Measure Stair Cappings and Nosings



#### Stair Cover Front Edge:

<b>T1</b>	=	Square	
<b>T2</b>	=	Small Bull Nose	
<b>T3</b>	=	Large Bull Nose	

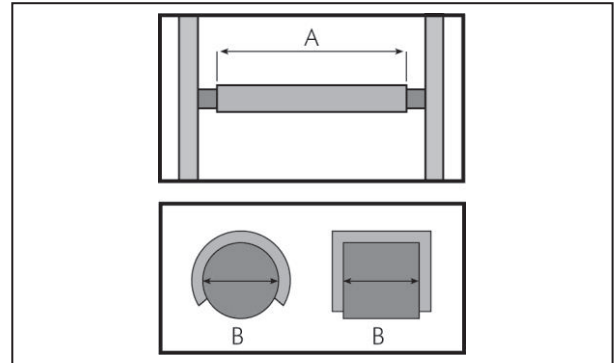
#### Grade

<b>BF</b>	=	Barefoot 80
<b>Fine</b>	=	Fine 46
<b>Ind</b>	=	Industrial 24
<b>HD</b>	=	Heavy Duty 20
<b>OS</b>	=	Offshore 16

#### Fastening Method

<b>PD</b>	=	Pre-Drilled
<b>PD20</b>	=	Pre-Drilled No 20 5 Gauge - 5/32" - 3.95mm
<b>PD11</b>	=	Pre-Drilled No 11 6 Gauge - 3/16" - 4.72mm
<b>PD9/32</b>	=	Pre-Drilled 9/32" - 7.18mm
<b>UCA</b>	=	Universal Clamp Assembly
<b>RV</b>	=	Rivets
<b>DN</b>	=	Drive Nails

### How to Measure Ladder Covers



#### Ladder Rung Shape

<b>RD</b>	=	Round
<b>SQ</b>	=	Square

#### Colours

<b>SY</b>	=	Safety Yellow
<b>BR</b>	=	Brown
<b>BL</b>	=	Black
<b>BRG</b>	=	Brunswick Green
<b>GRY</b>	=	Grey
<b>RD</b>	=	Red
<b>Oth</b>	=	Other (specify in notes)

#### Metal Backing

<b>CB</b>	=	Colourbond .55 mm
<b>GL</b>	=	Galvanised 1.2 mm
<b>GL3</b>	=	Galvanised 3.0 mm
<b>AL</b>	=	Aluminium 1.6 mm
<b>AL3</b>	=	Aluminium 3.0 mm
<b>304</b>	=	304 Grade Stainless Steel 1.2 mm
<b>316</b>	=	316 Grade Stainless Steel 1.2 mm